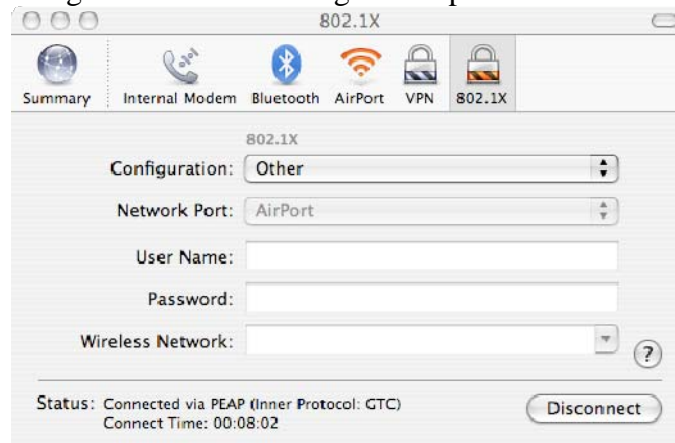


Secure wireless using Apple's Internet Connect

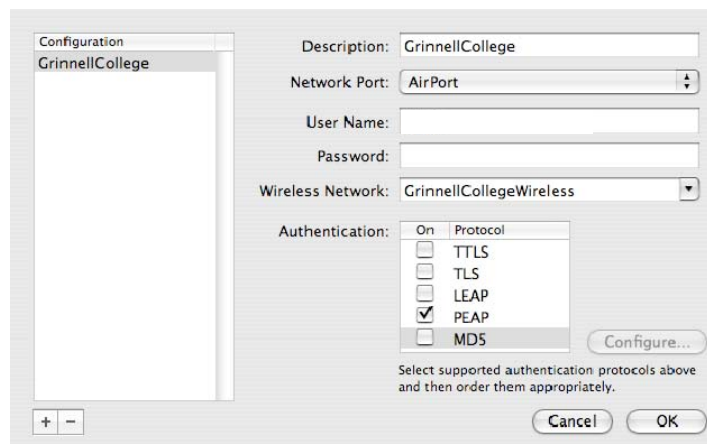
To join a WPA network, a Macintosh computer must have:

- An AirPort or AirPort Extreme card (third party wireless cards may work, check with the card manufacturer for WPA compatibility information).
- Mac OS X 10.3 or later.
- AirPort software version 3.3 or later for the AirPort Card (available via Software Update).
- AirPort software version 3.2 or later for the AirPort Extreme Card (available via Software Update).

1. Launch Internet Connect.
2. Select the Airport icon and verify that Airport Power is On
3. Select the 802.1X icon. If the 802.1x icon is not available click file and select New 802.1x connection.
4. Select Edit Configuration in the Configuration pull-down menu



5. Enter a Description.
6. Set the Network Port to Airport.
7. (Optional) Enter Network User Name and Password
8. Enter select GrinnellCollegeWireless in Wireless Network pull down menu.
9. (Optional) Uncheck all Authentication Protocols except PEAP.
10. Click OK



11. Click Connect
12. Enter Network Username and Password if they were not entered into the configuration, and click OK.



13. It is important to validate the certificate. The first time you connect, you will see a window that asks you to verify the server certificate. Click Show Certificate to expand the window and show the certificate information. Verify that the certificate is issued by Verisign, and that it is for 3a.grinnell.edu. Click the “Always trust these certificates” box, and click continue.
14. You should now be connected to the GrinnellCollegeWireless Network.
15. Open a Web Browser and load a web site to initiate the Clean Access certification process. For assistance with Clean Access, go to <http://www.grinnell.edu/its/cleanaccess>

See also:

“AirPort Card: When You Can Join a WPA Network”

<http://docs.info.apple.com/article.html?artnum=107795>

“AirPort: How to tell which AirPort software version is installed on a computer”

<http://docs.info.apple.com/article.html?artnum=93738>