

GRINNELL COLLEGE



2009
REPORT ON ADMISSION
AT GRINNELL COLLEGE

PREPARED BY

The Grinnell College Office of Admission

TABLE OF CONTENTS

Introduction	1-2
CHART I	Fall Semester Admission Statistics (Applied, Admitted, Matriculated), 1989-2009.....	3
CHART II	Early Decision Statistics, 1989-2009.....	4
CHART III	Regular Decision Statistics, 1989-2009	5
CHART IV	First-Year, Regular Decision Statistics, 1989-2009	6
CHART V	Transfer Statistics, 1998-2009	7
CHART VI	Spring Semester Admission Statistics, 1989-2009	8
CHART VII	Male/Female Matriculants, 1989-2009.....	9
CHART VIII	Admission Statistics (Gender) for Fall Semester, 2009	10
CHART IX	Secondary School Class Rank by Quintile, 1989-2009	11
CHART X	Secondary School Class Rank, First-Year Class.....	12
ILLUSTRATION A	Quality of First-Year Class by High School Rank.....	13
CHART XI	Average SAT and ACT Results, First-Year Class.....	14
CHART XII	SAT Score Distribution, First-Year Class	15-16
CHART XIII	ACT Score Distribution, First-Year Class.....	17
ILLUSTRATION B	Yield and Composition of First-Year Class by Admission Rating	18
CHART XIV	Average SAT Results, All Matriculants, 1989-2009	19
CHART XV	Geographic Distribution by Home State (Applicants, Admits and Matriculants, 2003-2009)	20-21
ILLUSTRATION C	Students Enrolled by Geographic Region (Home State)	22
CHART XVI	U.S. Students of Color, Enrollment History, 1999-2009.....	23
ILLUSTRATION D	Ethnic Composition of Entering Class.....	24
CHART XVII	Secondary School Class Rank, First-Year Class, Multicultural	25
CHART XVIII	Average SAT and ACT Results, First-Year Class, Multicultural	26
CHART XIX	International Report, Fall 2009.....	27
CHART XX	Secondary School Class Rank, First-Year Class, International.....	28

CHART XXI	Average TOEFL Results, First-Year Class, International	29
CHART XXII	Average SAT and ACT Results, First-Year Class, International.....	30
CHART XXIII	High School Type, by Gender, First-Year Class	31
ILLUSTRATION E	Enrollment by High School Type, First-Year Class	32
CHART XXIV	Waiting List Action, 1998-2009	33
CHART XXV	First-Choice Major, Entering Class, 2005-2009	34
CHART XXVI	Extracurricular Profile, First-Year Class	35

Overview

I'm pleased to be able to share the results of last year's efforts to recruit and enroll the new class entering in the fall of 2009. This comprehensive admission report provides important information about admission to Grinnell College for both the class entering in the fall of 2009 and in prior years. Additional information on Admission and Financial Aid outcomes can be found in the annual summaries for the Student-Faculty Committee on Admission and Financial Aid and in the Fact Book published by the Office of Institutional Research.

The Class of 2013's arrival capped a recruitment cycle that coincided with the beginning of a projected national decline in the number of high school graduates (starting with the Midwest and Northeast) and the worst economic crisis since the Great Depression. Conventional wisdom in the media suggested that private institutions such as liberal arts colleges would see significant declines in applications and enrollment due to the high cost and lack of training for particular job skills. Such predictions proved not to be the case for Grinnell which saw only a modest dip in applications while enrolling a first-year and transfer class slightly above target and on budget. Overall Grinnell welcomed 378 first-year and 28 transfer students at the start of school.

This year's highlights include:

- The second highest number of first-year applications in college history, 3809 in 2009 versus 3888 in 2008;
- A second year of total combined first-year and transfer applicants above 4,000, 4013 in 2009 versus 4057 in 2008;
- The highest ever number of Early Decision applications, up 52% to 304 in 2009 versus 200 in 2008;
- Increased selectivity, 29.1 % of total first-year applicants admitted in 2009 versus 35.6% in 2008;
- A record percentage of domestic students of color in the first-year class, 25.7% in 2009 versus 22.6% in 2008;
- An increase in first-generation students, 19% in 2009 versus 16% in 2008;
- Increased international diversity, 13% in 2009 versus 11% in 2008;
- Increased yield, 34.3% in 2009 versus 33.6% in 2008;

As the economic situation unfolded this past year many institutions announced increases to their financial aid budgets to preempt concerns from families whose finances were impacted in the downturn. This was also the second year that a number of Grinnell's competitor institutions funded no loan programs to all or some of their eligible admitted students. Grinnell's own financial aid budget climbed more than 13% to \$34,000,000 for the 2009-10 year. While it is unclear if the financial aid improvements at other institutions will be permanent, for some institutions their generous financial aid programs will not be sustainable. Last month two well regarded

institutions, Williams College and Dartmouth College, announced pulling back on their no loan programs signaling that schools are willing to rethink their aid programs.

On behalf of my colleagues in the admission and financial aid offices, I extend our thanks to those in the college community who participated in the college's efforts to attract and enroll such a wonderfully talented and diverse incoming class.

Finally, I'd like to again recognize Connie Newport for her hard work in compiling the detailed information contained in this comprehensive report.

Seth Allen
Dean of Admission and Financial Aid

CHART I
FALL SEMESTER ADMISSION STATISTICS
(APPLIED, ADMITTED, MATRICULATED)
1989-2009

	Applied	Admitted	% Admitted	Matriculated	% Matriculated
1989	1881	1238	65.8%	399	32.2%
1990	1755	1184	67.5%	386	32.6%
1991	1717	1056	61.5%	373	35.3%
1992	2015	1225	60.8%	348	28.4%
1993	2212	1510	68.3%	489	32.4%
1994	2299	1250	54.4%	369	29.5%
1995	2170	1463	67.4%	367	25.1%
1996	2120	1397	65.9%	393	28.1%
1997	2918	1472	50.4%	465	31.6%
1998	2832	1231	43.5%	380	30.9%
1999	2476	1239	50.0%	356	28.7%
2000	2886	1303	45.1%	391	30.0%
2001	2960	1362	46.0%	401	29.4%
2002	3042	1405	46.2%	398	28.3%
2003	3058	1482	48.5%	418	28.2%
2004	3733	1543	41.3%	454	29.4%
2005	3923	1435	36.6%	408	28.4%
2006	3891	1443	37.1%	426	29.5%
2007	3973	1569	39.5%	448	28.6%
2008	4057	1388	34.2%	468	33.7%
2009	4013	1158	28.9%	406	35.1%

Applied and Admitted totals include three (3) deferrals to Fall 2010.
Two one-year exchange students applied, one was admitted and enrolled.

**CHART II
EARLY DECISION, FALL SEMESTERS, 1989-2009**

	APPLIED	ADMITTED	% ADMITTED	MATRICULATED	% MATRICULATED
1989	138	91	65.9%	65	71.4%
1990	172	132	76.7%	104	78.8%
1991	151	121	80.1%	92	76.0%
1992	138	108	78.3%	82	75.9%
1993	147	108	73.5%	78	72.2%
1994	142	103	72.5%	77	74.8%
1995	105	76	72.4%	66	86.8%
1996	71	53	74.6%	45	84.9%
1997	89	59	66.3%	51	86.4%
1998	91	64	70.3%	60	93.8%
1999	88	41	46.6%	35	85.4%
2000	78	49	62.8%	45	91.8%
2001	66	43	65.2%	39	90.7%
2002	72	57	79.2%	53	93.0%
2003	119	94	79.0%	88	93.6%
2004	134	97	72.4%	90	92.8%
2005	148	101	68.2%	95	94.1%
2006	161	129	80.1%	116	89.9%
2007	167	127	76.0%	115	90.6%
2008	200	137	68.5%	131	95.6%
2009	304	145	47.7%	134	92.4%

Prior to 2009, Early Decision applications that were deferred to Regular Decision for consideration were *excluded* from the Early Decision application total.

EARLY DECISION APPLICATIONS DEFERRED TO REGULAR DECISION

	APPLIED	ADMITTED	ENROLLED	WAITLIST	DENIED
2009	21	4	4	8	3

**CHART III
REGULAR DECISION, FALL SEMESTERS, 1989-2009
ALL NEW STUDENTS - FIRST-YEAR AND TRANSFER**

	APPLIED	ADMITTED	% ADMITTED	MATRICULATED	% MATRICULATED
1989	1743	1147	65.8%	334	29.1%
1990	1583	1052	66.5%	282	26.8%
1991	1566	935	59.7%	281	30.1%
1992	1877	1117	59.5%	266	23.8%
1993	2065	1402	67.9%	408	29.1%
1994	2157	1147	53.2%	292	25.5%
1995	2065	1387	67.2%	301	21.7%
1996	2049	1344	65.6%	348	25.9%
1997	2829	1413	49.9%	414	29.3%
1998	2754	1167	42.4%	320	27.4%
1999	2412	1198	49.7%	321	26.8%
2000	2808	1254	44.7%	346	27.6%
2001	2894	1319	45.6%	362	27.4%
2002	2970	1348	45.4%	345	25.6%
2003	2939	1388	47.2%	330	23.8%
2004	3599	1446	40.2%	364	25.2%
2005	3775	1334	35.3%	313	23.5%
2006	3730	1314	35.2%	310	23.6%
2007	3806	1442	37.9%	333	23.1%
2008	3855	1249	32.4%	335	26.8%
2009	3730	1013	27.2%	272	26.9%

Applied and Admitted totals include two (2) deferrals to Fall 2010.

**CHART IV
FIRST-YEAR STATISTICS - REGULAR DECISION
FALL SEMESTERS, 1999-2009**

	APPLIED	ADMITTED	% ADMITTED	MATRICULATED	% MATRICULATED
1999	2217	1134	51.2%	290	25.6%
2000	2589	1200	46.3%	346	28.8%
2001	2635	1238	47.0%	321	25.9%
2002	2706	1279	47.3%	316	24.7%
2003	2730	1349	49.4%	317	23.5%
2004	3418	1404	41.1%	345	24.6%
2005	3582	1297	36.2%	294	22.7%
2006	3542	1272	35.9%	290	22.8%
2007	3610	1407	39.0%	312	22.2%
2008	3688	1246	33.8%	333	26.7%
2009	3526	963	27.3%	244	25.3%

Applications include 21 Early Decision applications deferred to Regular Decision for consideration.
Applied and Admitted totals include two (2) deferrals to 2010.

CHART V
TRANSFER STATISTICS, FALL SEMESTERS, 1999-2009

	APPLIED	ADMITTED	% ADMITTED	MATRICULATED	% MATRICULATED
1999	195	64	32.8%	31	48.4%
2000	219	54	24.7%	26	48.1%
2001	259	81	31.3%	41	50.6%
2002	264	69	26.1%	29	42.0%
2003	209	39	18.7%	13	33.3%
2004	181	42	23.2%	19	45.2%
2005	193	37	19.2%	19	51.4%
2006	188	42	22.3%	20	47.6%
2007	196	35	17.9%	21	60.0%
2008	169	5	3.0%	4	80.0%
2009	204	50	24.5%	28	56.0%

Applied includes 2 one-year exchange students, admits and matriculants include 1 one-year exchange.

CHART VI
SPRING ADMISSION STATISTICS, 1989-2009

	APPLIED	ADMITTED	% ADMITTED	MATRICULATED	% MATRICULATED
1989	18	2	11.1%	2	100.0%
1990	12	2	16.7%	2	100.0%
1991	34	26	76.5%	17	65.4%
1992	19	8	42.1%	7	87.5%
1993	53	41	77.4%	18	43.9%
1994	13	2	15.4%	2	100.0%
1995	16	5	31.3%	4	80.0%
1996	16	10	62.5%	7	70.0%
1997	26	7	26.9%	6	85.7%
1998	35	10	28.6%	6	60.0%
1999	11	7	63.6%	3	42.9%
2000	21	6	28.6%	5	83.3%
2001	28	8	28.6%	5	62.5%
2002	31	15	48.4%	8	53.3%
2003	17	9	52.9%	7	77.8%
2004	38	20	52.6%	10	50.0%
2005	34	25	73.5%	10	40.0%
2006	28	17	60.7%	9	52.9%
2007	19	12	63.2%	7	58.3%
2008	17	17	100.0%	6	35.3%
2009	31	7	22.6%	6	85.7%

**CHART VII
TABLE OF MALE/FEMALE MATRICULANTS
FALL SEMESTERS, 1989-2009**

	MEN	% OF ENTERING CLASS	WOMEN	% OF ENTERING CLASS	TOTAL MATRICULATED
1989	190	47.6%	209	52.4%	399
1990	197	51.0%	189	49.0%	386
1991	159	42.6%	214	57.4%	373
1992	149	42.8%	199	57.2%	348
1993	235	48.1%	254	51.9%	489
1994	161	43.9%	206	56.1%	367
1995	170	46.3%	197	53.7%	367
1996	161	41.0%	232	59.0%	393
1997	200	43.0%	265	57.0%	465
1998	168	44.2%	212	55.8%	380
1999	172	48.3%	184	51.7%	356
2000	164	41.9%	227	58.1%	391
2001	189	47.1%	212	52.9%	401
2002	178	44.7%	220	55.3%	398
2003	195	46.7%	223	53.3%	418
2004	205	45.2%	249	54.8%	454
2005	193	47.3%	215	52.7%	408
2006	208	48.8%	218	51.2%	426
2007	206	46.0%	242	54.0%	448
2008	216	46.2%	252	53.8%	468
2009	195	48.0%	211	52.0%	406

Total matriculated includes one (1) special exchange student.

**CHART VIII
ADMISSION STATISTICS BY GENDER
FALL SEMESTER, 2009**

	Applied	Actionable	Admitted	% Admitted	Matriculated	% Matriculated	Deny	Withdrew	Incomplete	Admit/ Withdrew	Paid/ Withdrew
First-Year (Male)	1789	1510	507	33.6%	176	34.7%	980	74	228	319	12
First-Year (Female)	2020	1781	601	33.7%	202	33.6%	1141	93	185	392	7
Transfer (Male)	110	66	29	43.9%	18	62.1%	35	8	38	11	0
Transfer (Female)	92	47	20	42.6%	9	45.0%	27	6	39	9	2
Special Exch. (Male)	1	1	1	100.0%	1	100.0%	0	0	0	0	0
Special Exch. (Female)	1	1	0	0.0%	0	0.0%	1	0	0	0	0
TOTALS	4013	3406	1158	34.0%	406	35.1%	2184	181	490	731	21

Applied and Admitted totals include three (3) deferrals to Fall 2010.

CHART IX
SECONDARY SCHOOL CLASS RANK BY QUINTILE - ALL MATRICULANTS
FALL SEMESTERS, 1989-2009

	I	%	II	%	III	%	IV	%	V	%	UNKNOWN	TOTAL
1989	281	82.4%	42	12.3%	15	4.4%	3	0.9%	0	0.0%	58	399
1990	256	78.0%	55	16.8%	13	3.9%	3	0.9%	1	0.3%	58	386
1991	248	79.0%	44	14.0%	16	5.1%	4	1.3%	2	0.6%	59	373
1992	242	85.5%	28	9.9%	9	3.2%	3	1.1%	1	0.4%	65	348
1993	340	84.8%	41	10.2%	13	3.2%	5	1.2%	2	0.5%	82	483
1994	267	86.1%	35	11.3%	6	2.0%	1	0.3%	1	0.3%	59	369
1995	237	80.6%	49	16.7%	5	1.7%	2	0.7%	1	0.3%	73	367
1996	259	82.5%	43	13.7%	12	3.8%	0	0.0%	0	0.0%	79	393
1997	311	86.4%	46	12.8%	2	0.5%	1	0.3%	0	0.0%	105	465
1998	275	86.2%	38	11.9%	4	1.3%	1	0.3%	1	0.3%	61	380
1999	231	79.9%	54	18.7%	4	1.4%	0	0.0%	0	0.0%	69	358
2000	252	85.7%	38	12.9%	3	1.0%	1	0.3%	0	0.0%	97	391
2001	240	83.3%	43	14.9%	3	1.0%	2	0.7%	0	0.0%	113	401
2002	215	81.7%	41	15.6%	4	1.5%	1	0.4%	2	0.8%	135	398
2003	247	81.3%	50	16.4%	7	2.3%	0	0.0%	0	0.0%	114	418
2004	283	88.2%	36	11.2%	2	0.6%	0	0.0%	0	0.0%	133	454
2005	257	89.2%	22	7.7%	6	2.1%	3	1.0%	0	0.0%	120	408
2006	238	85.0%	36	12.9%	6	2.1%	0	0.0%	0	0.0%	146	426
2007	257	88.3%	31	10.7%	1	0.3%	2	0.7%	0	0.0%	157	448
2008	220	84.0%	36	13.7%	5	1.9%	1	0.4%	0	0.0%	206	468
2009	165	83.3%	27	13.6%	2	1.0%	4	2.0%	0	0.0%	208	406

Percentages based on a total of 198 matriculants whose class rank was reported.

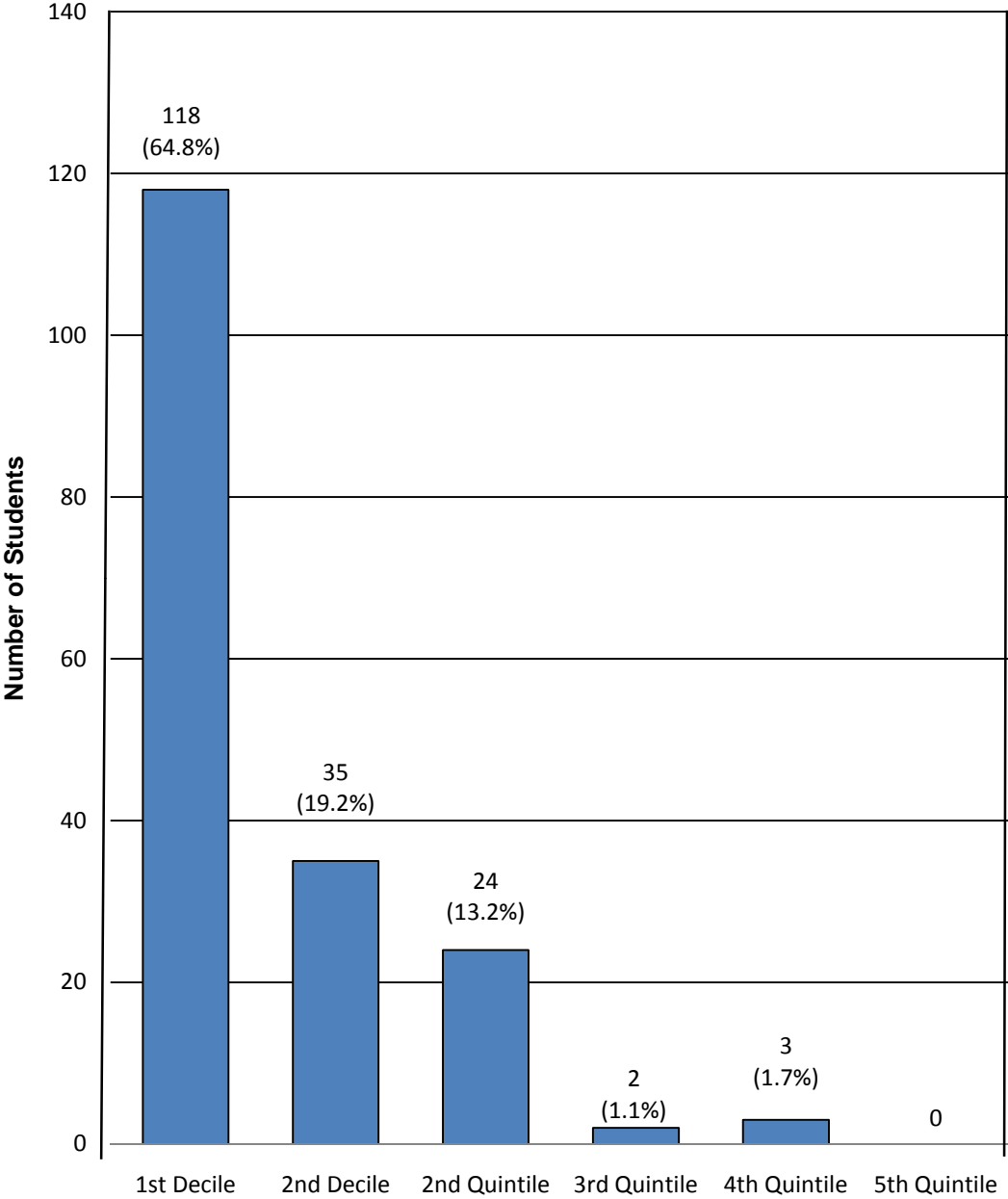
CHART X
FIRST-YEAR CLASS, FALL 2009
SECONDARY SCHOOL CLASS RANK - FIRST AND SECOND DECILES, SECOND THROUGH FIFTH QUINTILES

APPLIED (3809)												
	1ST DECILE		2ND DECILE		2ND QUINTILE		3RD QUINTILE		4TH QUINTILE		5TH QUINTILE	
	No.	%	No.	%	No.	%	No.	%	No.	%	No.	%
FEMALE	659	68.2%	151	15.6%	113	11.7%	30	3.1%	9	0.9%	4	0.4%
MALE	492	58.9%	162	19.4%	128	15.3%	40	4.8%	12	1.4%	1	0.1%
COMBINED	1151	63.9%	313	17.4%	241	13.4%	70	3.9%	21	1.2%	5	0.3%
NOT RANKED=2008												

ADMITTED (1108)												
	1ST DECILE		2ND DECILE		2ND QUINTILE		3RD QUINTILE		4TH QUINTILE		5TH QUINTILE	
	No.	%	No.	%	No.	%	No.	%	No.	%	No.	%
FEMALE	267	85.3%	28	8.9%	14	4.5%	2	0.6%	2	0.6%	0	0.0%
MALE	178	69.8%	46	18.0%	26	10.2%	3	1.2%	2	0.8%	0	0.0%
COMBINED	445	78.3%	74	13.0%	40	7.0%	5	0.9%	4	0.7%	0	0.0%
NOT RANKED=540												

MATRICULATED (378)												
	1ST DECILE		2ND DECILE		2ND QUINTILE		3RD QUINTILE		4TH QUINTILE		5TH QUINTILE	
	No.	%	No.	%	No.	%	No.	%	No.	%	No.	%
FEMALE	74	74.0%	15	15.0%	9	9.0%	1	1.0%	1	1.0%	0	0.0%
MALE	44	53.7%	20	24.4%	15	18.3%	1	1.2%	2	2.4%	0	0.0%
COMBINED	118	64.8%	35	19.2%	24	13.2%	2	1.1%	3	1.7%	0	0.0%
NOT RANKED=196												

ILLUSTRATION A
QUALITY OF FIRST-YEAR CLASS
BY HIGH SCHOOL RANK IN CLASS - FALL 2009



**CHART XI
FIRST-YEAR CLASS, FALL 2009
AVERAGE STANDARDIZED TEST RESULTS**

SCHOLASTIC ASSESSMENT TEST - SAT

	APPLIED			ADMITTED			MATRICULATED		
	Critical Reading	Math	Number	Critical Reading	Math	Number	Critical Reading	Math	Number
FEMALE	641	669	1174	693	677	320	656	652	115
MALE	637	688	1084	691	702	276	664	680	95
COMBINED	639	678	2258	692	689	596	660	665	210

AMERICAN COLLEGE TEST - ACT

	APPLIED		ADMITTED		MATRICULATED	
	COM	NUM	COM	NUM	COM	NUM
FEMALE	29.2	740	30.8	280	29.4	86
MALE	29.9	565	31.3	230	30.5	80
COMBINED	29.5	1305	31.0	510	30.0	166

ACT KEY: COM=Composite, NUM=Number

**CHART XII
FIRST-YEAR CLASS, FALL 2009
SAT SCORE DISTRIBUTION - CRITICAL READING**

RANGE	GENDER	APPLIED	ADMITTED	DENIED	MATRICULATED	PERCENT OF CLASS*
750 to 800	MALE	189	89	17	25	
	FEMALE	212	108	18	23	
	COMBINED	401	197	35	48	
700 to 740	MALE	179	67	38	17	
	FEMALE	200	83	31	23	
	COMBINED	379	150	69	40	
650 to 690	MALE	187	42	66	17	
	FEMALE	190	42	65	20	
	COMBINED	377	84	131	37	
600 to 640	MALE	179	36	92	15	
	FEMALE	204	45	98	23	
	COMBINED	383	81	190	38	
550 to 590	MALE	139	23	95	9	
	FEMALE	153	13	110	8	
	COMBINED	292	36	205	17	
500 to 540	MALE	98	13	61	6	
	FEMALE	97	16	66	8	
	COMBINED	195	29	127	14	
450 to 490	MALE	58	4	40	4	
	FEMALE	60	5	45	4	
	COMBINED	118	9	85	8	
400 to 440	MALE	30	1	21	1	
	FEMALE	49	8	34	6	
	COMBINED	79	9	55	7	
Below 400	MALE	25	1	16	1	
	FEMALE	9	0	4	0	
	COMBINED	34	1	20	1	

* Based on number of scores submitted (210)

**CHART XII
FIRST-YEAR CLASS, FALL 2009
SAT SCORE DISTRIBUTION - MATH**

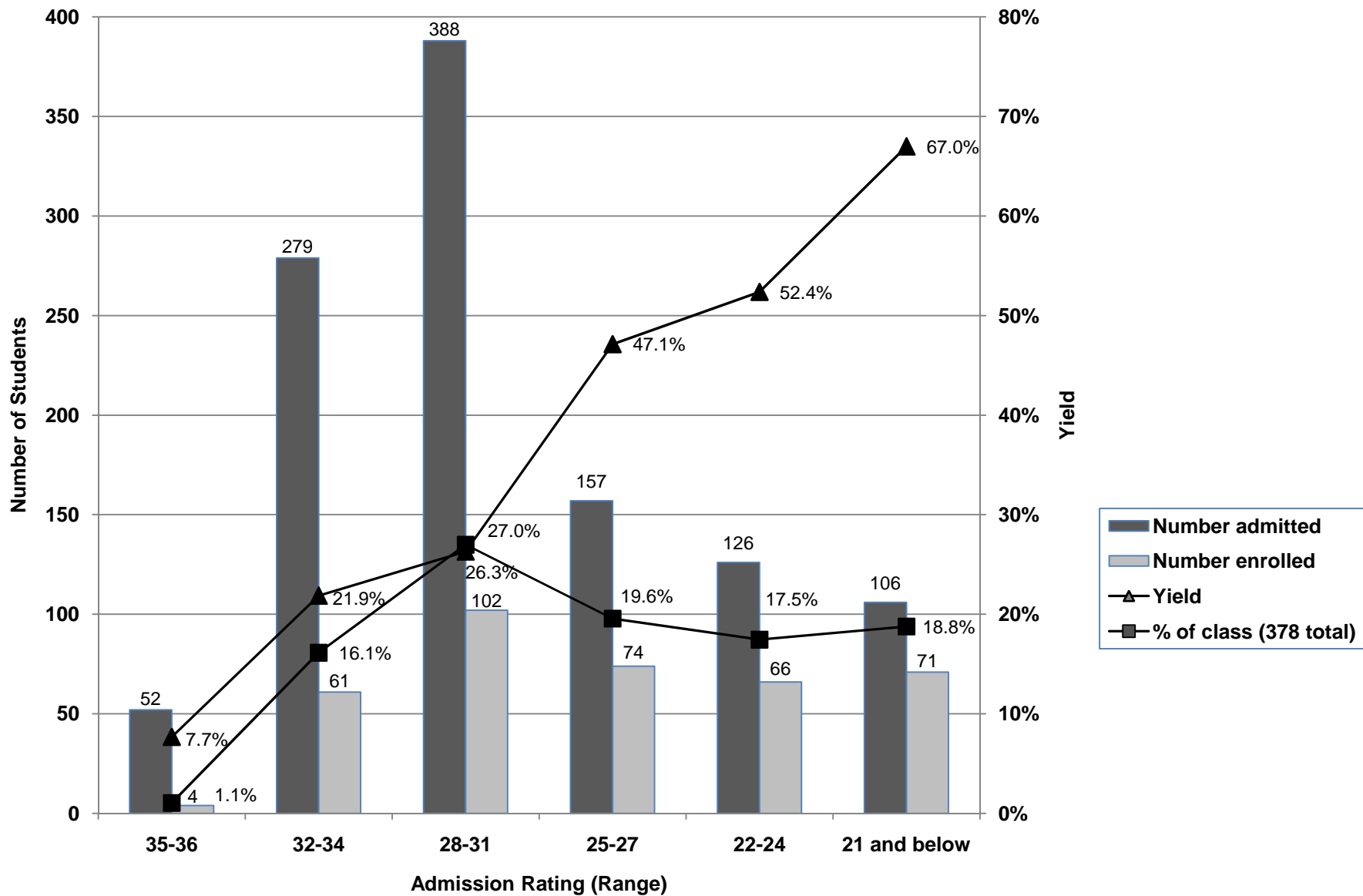
RANGE	GENDER	APPLIED	ADMITTED	DENIED	MATRICULATED	PERCENT OF CLASS*
	MALE	343	88	166	22	
750 to 800	FEMALE	301	69	157	21	
	COMBINED	644	157	323	43	20.5%
	MALE	217	74	73	20	
700 to 740	FEMALE	170	64	56	16	
	COMBINED	387	138	129	36	17.1%
	MALE	234	60	78	28	
650 to 690	FEMALE	272	96	71	29	
	COMBINED	506	156	149	57	27.1%
	MALE	128	31	50	13	
600 to 640	FEMALE	197	45	69	20	
	COMBINED	325	76	119	33	15.7%
	MALE	71	12	33	4	
550 to 590	FEMALE	109	26	53	15	
	COMBINED	180	38	86	19	9.0%
	MALE	62	8	32	5	
500 to 540	FEMALE	70	11	35	7	
	COMBINED	132	19	67	12	5.7%
	MALE	16	1	8	1	
450 to 490	FEMALE	36	6	18	4	
	COMBINED	52	7	26	5	2.4%
	MALE	7	1	4	1	
400 to 440	FEMALE	16	3	9	3	
	COMBINED	23	4	13	4	1.9%
	MALE	6	1	2	1	
BELOW 400	FEMALE	3	0	3	0	
	COMBINED	9	1	5	1	0.5%

**CHART XIII
FIRST-YEAR CLASS, 2009
ACT SCORE DISTRIBUTION**

COMPOSITE	GENDER	APPLIED	ADMITTED	DENIED	MATRICULATED	PERCENT OF CLASS *
	MALE	101	66	6	14	
34 to 36	FEMALE	81	59	0	9	
	COMBINED	182	125	6	23	13.9%
	MALE	118	56	12	18	
32 to 33	FEMALE	132	75	4	18	
	COMBINED	250	131	16	36	21.7%
	MALE	132	53	21	23	
30 to 31	FEMALE	200	68	26	18	
	COMBINED	332	121	47	41	24.7%
	MALE	85	27	15	15	
28 to 29	FEMALE	122	32	31	15	
	COMBINED	207	59	46	30	18.1%
	MALE	91	22	28	8	
24 to 27	FEMALE	140	39	42	22	
	COMBINED	231	61	70	30	18.1%
	MALE	33	6	14	2	
20 to 23	FEMALE	47	6	19	3	
	COMBINED	80	12	33	5	3.0%
	MALE	4	0	3	0	
17 to 19	FEMALE	16	1	10	1	
	COMBINED	20	1	13	1	0.6%
	MALE	1	0	1	0	
BELOW 16	FEMALE	2	0	0	0	
	COMBINED	3	0	1	0	0.0%

* Based on number of scores submitted (166)

**ILLUSTRATION B
YIELD AND COMPOSITION OF 2009 FIRST-YEAR CLASS
BY ADMISSION RATING**



**CHART XIV
AVERAGE SAT RESULTS
ALL MATRICULANTS - FALL SEMESTERS, 1989-2009**

	SAT CRITICAL READING	SAT MATH
1989	604	636
1990	602	634
1991	608	633
1992	596	634
1993	602	642
1994	606	653
1995	595	637
1996	673	646
1997	674	659
1998	674	664
1999	668	658
2000	673	660
2001	668	665
2002	675	660
2003	666	671
2004	684	683
2005	685	678
2006	673	665
2007	669	671
2008	669	662
2009	661	664

BEGINNING IN 1996, SAT I SCORES ARE
REPORTED ON THE RECENTERED SCALE

**CHART XV
DISTRIBUTION BY HOME STATE
APPLICANTS (A), ADMITS (AD) AND MATRICULANTS (M)**

	2004			2005			2006			2007			2008			2009		
	A	AD	M	A	AD	M	A	AD	M	A	AD	M	A	AD	M	A	AD	M
ALABAMA	9	5	1	12	5	0	14	8	4	6	3	0	8	5	0	7	3	0
ALASKA	10	5	0	6	4	1	8	2	0	5	2	0	6	5	0	6	4	1
ARIZONA	30	11	4	44	16	0	33	14	2	47	18	1	28	11	5	30	14	6
ARKANSAS	29	12	1	11	5	0	13	6	2	14	6	1	16	10	3	5	1	1
CALIFORNIA	310	116	27	302	101	26	260	102	19	255	112	28	258	96	30	280	91	27
COLORADO	71	35	13	84	44	13	99	47	14	81	41	13	82	35	11	56	16	3
CONNECTICUT	29	13	5	34	13	5	39	18	6	45	20	5	30	15	5	28	6	1
DELAWARE	3	1	0	2	1	1	6	3	0	2	1	1	0	0	0	3	2	0
WASH. , DC	12	8	2	23	9	8	22	11	7	15	8	7	17	4	3	21	13	4
FLORIDA	30	11	1	42	12	3	77	21	5	60	21	3	43	21	7	39	13	3
GEORGIA	22	11	1	22	11	2	20	10	3	28	10	2	17	9	2	18	8	1
GUAM	0	0	0	0	0	0	1	1	0	1	0	0	1	0	0	0	0	0
HAWAII	26	13	1	26	18	6	14	7	3	25	17	4	29	14	3	18	6	1
IDAHO	4	1	0	9	3	0	5	2	0	4	2	1	7	3	1	7	1	1
ILLINOIS	409	177	57	421	178	47	400	185	65	380	197	60	400	171	57	432	146	56
INDIANA	46	30	10	38	21	7	46	33	9	38	19	5	41	18	7	35	13	2
IOWA	225	102	48	211	85	35	202	109	52	188	111	44	204	122	46	184	84	41
KANSAS	63	34	14	61	30	10	73	35	12	50	29	7	48	25	7	49	20	4
KENTUCKY	15	11	3	16	13	6	12	6	2	16	14	5	14	6	2	12	3	1
LOUISIANA	6	1	1	10	2	1	8	1	0	9	5	2	11	4	0	10	8	3
MAINE	13	8	3	19	10	2	13	5	1	14	4	1	13	6	1	7	2	0
MARYLAND	42	17	4	59	21	6	61	30	9	70	29	8	59	34	14	62	18	7
MASSACHUSETTS	78	30	9	84	31	6	95	38	8	92	40	9	90	39	13	94	30	8
MICHIGAN	51	22	8	57	25	6	57	24	6	60	29	4	44	17	7	46	13	1
MINNESOTA	197	98	36	237	108	48	212	92	24	217	128	37	237	115	43	237	91	27
MISSISSIPPI	28	10	3	19	9	3	31	11	0	21	8	2	14	7	0	10	3	0

CHART XV
DISTRIBUTION BY HOME STATE
APPLICANTS (A), ADMITS (AD) AND MATRICULANTS (M)

CHART XI, PAGE 2	2004			2005			2006			2007			2008			2009		
	A	AD	M	A	AD	M	A	AD	M	A	AD	M	A	AD	M	A	AD	M
MISSOURI	89	49	10	105	59	14	126	60	18	90	50	11	92	43	15	94	36	14
MONTANA	6	2	1	6	2	1	8	5	0	7	5	1	4	3	0	7	3	0
NEBRASKA	30	20	8	49	26	9	43	24	9	39	18	4	35	17	8	34	15	4
NEVADA	8	1	1	6	3	1	5	1	0	4	2	0	4	1	0	11	2	0
NEW HAMPSHIRE	15	4	0	10	3	2	9	6	1	11	5	1	13	3	1	7	3	1
NEW JERSEY	49	23	6	32	9	3	54	21	8	39	15	2	37	19	5	53	19	6
NEW MEXICO	24	16	5	32	16	6	26	10	2	27	17	1	23	11	2	22	11	2
NEW YORK	114	37	12	145	53	18	129	48	8	153	75	19	154	72	22	144	57	20
NORTH CAROLINA	19	8	3	17	8	4	22	15	2	22	11	2	24	12	3	23	12	4
NORTH DAKOTA	1	0	0	1	0	0	2	0	0	5	4	1	2	2	0	5	2	2
OHIO	72	45	13	75	35	8	68	30	13	74	36	6	47	22	10	59	25	7
OKLAHOMA	12	7	2	13	10	4	20	11	4	15	7	1	17	10	4	9	4	1
OREGON	71	43	13	63	29	9	72	45	14	65	34	8	69	33	7	56	17	7
PENNSYLVANIA	44	17	6	53	15	2	47	20	4	28	15	4	59	22	9	43	20	7
PUERTO RICO	3	1	0	0	0	0	3	0	0	0	0	0	3	2	0	2	2	0
RHODE ISLAND	4	2	1	2	0	0	6	2	1	3	1	0	6	5	1	5	2	1
SOUTH CAROLINA	9	7	2	5	3	1	5	1	0	5	0	0	0	0	0	4	2	0
SOUTH DAKOTA	14	12	6	7	2	0	15	11	2	13	7	4	8	8	2	6	2	1
TENNESSEE	27	14	5	26	13	2	19	8	2	33	20	7	20	14	3	26	11	0
TEXAS	146	58	13	130	46	6	129	41	18	129	57	17	97	46	14	119	44	12
UTAH	12	8	3	14	9	1	13	8	1	13	6	2	13	8	0	11	3	1
VERMONT	6	3	0	12	6	3	11	4	1	14	9	3	15	8	5	11	5	2
VIRGIN ISLANDS	0	0	0	1	0	0	0	0	0	2	0	0	0	0	0	0	0	0
VIRGINIA	28	16	3	36	16	6	39	17	1	43	18	6	44	17	6	24	7	2
WASHINGTON	92	57	15	83	29	5	84	36	14	80	40	5	87	35	10	80	37	9
WEST VIRGINIA	4	3	0	3	1	0	6	5	1	6	3	1	2	2	1	6	1	1
WISCONSIN	99	48	14	101	43	12	114	45	9	89	50	12	86	36	15	107	50	18
WYOMING	6	5	3	4	1	0	7	4	1	9	4	1	2	2	2	3	2	1

ILLUSTRATION C
FIRST-YEAR STUDENTS ENROLLED BY GEOGRAPHIC REGION
(HOME STATE)

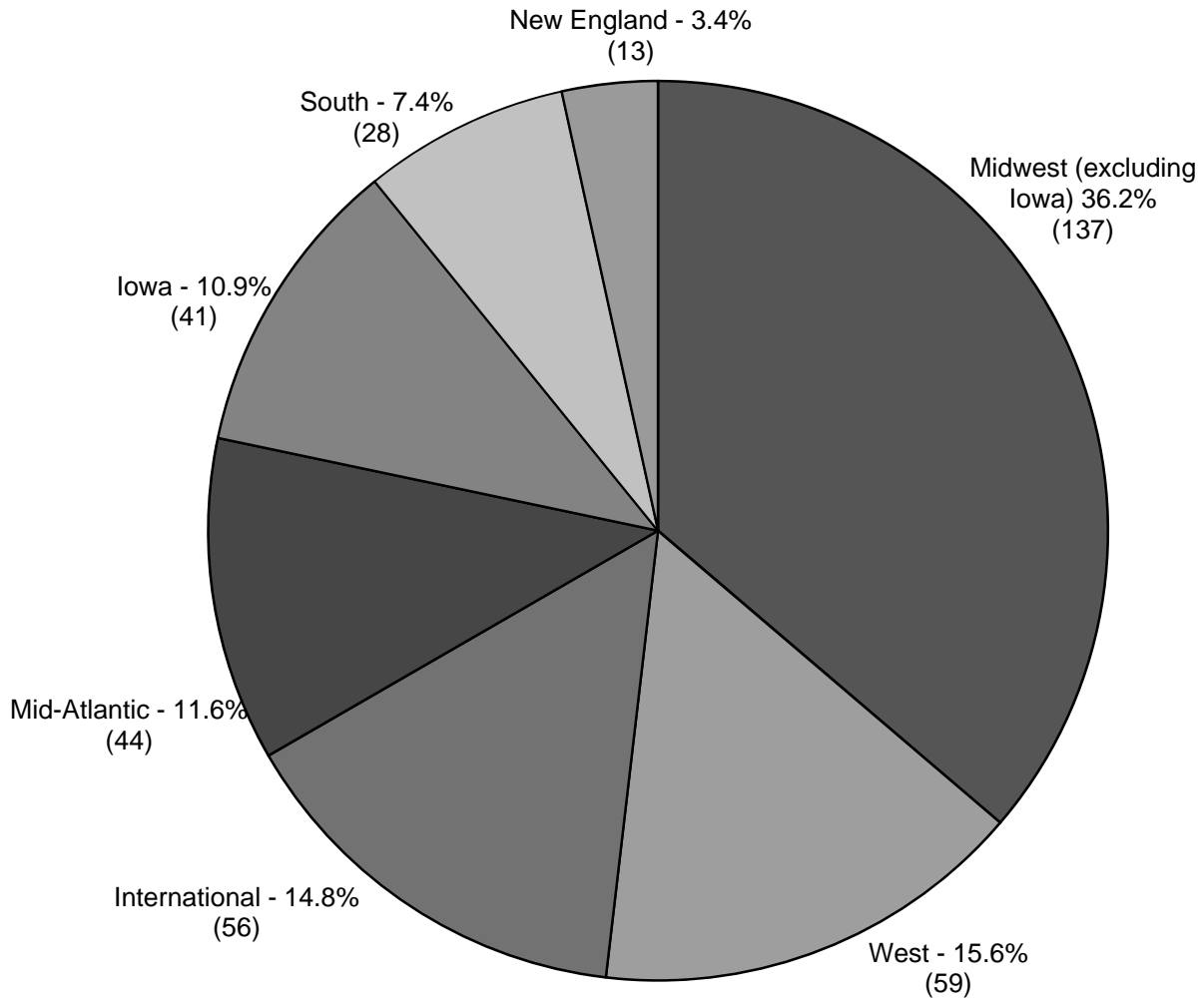


CHART XVI
U.S. STUDENTS OF COLOR (FIRST-YEAR AND TRANSFER)
ENROLLMENT HISTORY, 1999-2009

	<i>Class size</i>	<i>U.S. Multicultural</i>	<i>Percent of Class</i>	<i>African-American</i>	<i>Percent of Class</i>	<i>Latino/a</i>	<i>Percent of Class</i>	<i>Asian-American</i>	<i>Percent of Class</i>	<i>Native American</i>	<i>Percent of Class</i>	<i>**Unknown ethnicity</i>	<i>Percent of Class</i>
1999	356	54	15.2%	11	3.1%	22	6.2%	19	5.3%	2	0.6%	28	7.9%
2000	391	50	12.8%	18	4.6%	15	3.8%	15	3.8%	2	0.5%	43	11.0%
2001	401	53	13.2%	19	4.7%	13	3.2%	17	4.2%	4	1.0%	39	9.7%
2002	398	38	9.5%	7	1.8%	10	2.5%	19	4.8%	2	0.5%	39	9.8%
2003	418	71	17.0%	19	4.5%	21	5.0%	25	6.0%	6	1.4%	13	3.1%
2004	454	61	13.4%	18	4.0%	17	3.7%	25	5.5%	1	0.2%	27	5.9%
2005	408	83	20.3%	25	6.1%	27	6.6%	31	7.6%	0	0.0%	24	5.9%
2006	426	80	18.8%	22	5.2%	24	5.6%	32	7.5%	2	0.5%	26	6.1%
2007	448	88	19.6%	23	5.1%	27	6.0%	35	7.8%	3	0.7%	30	6.7%
2008	468	105	22.4%	29	6.2%	38	8.1%	36	7.7%	2	0.4%	42	9.0%
2009	406	102	25.1%	31	7.6%	30	7.4%	31	7.6%	10	2.5%	42	10.3%

ILLUSTRATION D
ETHNIC COMPOSITION OF ENTERING CLASS (FIRST-YEAR AND TRANSFER)
FALL 2009

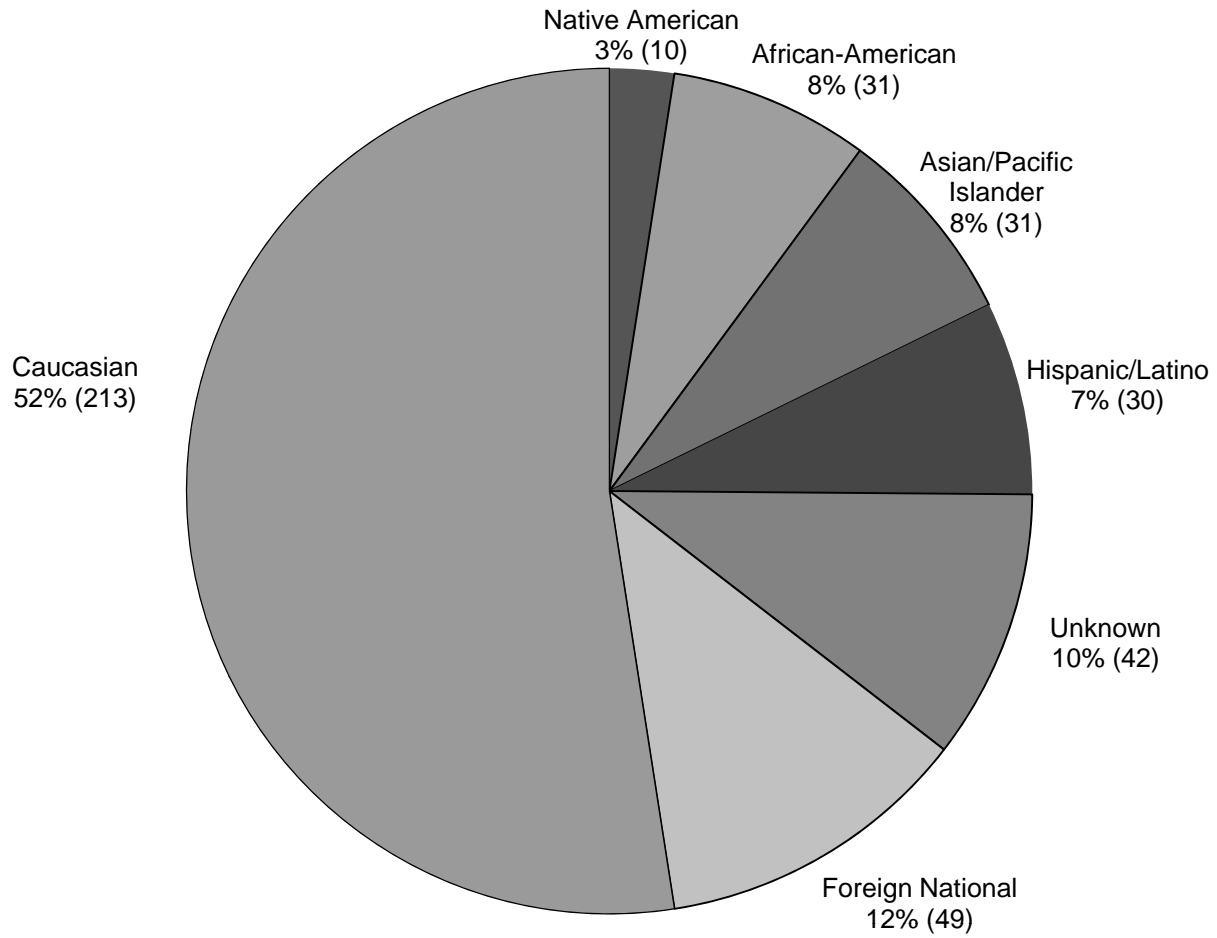


CHART XVII
FIRST-YEAR CLASS, 2009 - MULTICULTURAL (excludes students who did not self identify)
SECONDARY SCHOOL CLASS RANK - FIRST AND SECOND DECILES, SECOND THROUGH FIFTH QUINTILES

APPLIED (701)												
	1ST DECILE		2ND DECILE		2ND QUINTILE		3RD QUINTILE		4TH QUINTILE		5TH QUINTILE	
	No.	%	No.	%	No.	%	No.	%	No.	%	No.	%
FEMALE	117	61.6%	32	16.8%	29	15.3%	9	4.7%	3	1.6%	0	0.0%
MALE	64	43.8%	31	21.2%	34	23.3%	12	8.2%	4	2.7%	1	0.7%
COMBINED	181	53.9%	63	18.7%	63	18.7%	21	6.3%	7	2.1%	1	0.3%
NOT RANKED=365												

ADMITTED (306)												
	1ST DECILE		2ND DECILE		2ND QUINTILE		3RD QUINTILE		4TH QUINTILE		5TH QUINTILE	
	No.	%	No.	%	No.	%	No.	%	No.	%	No.	%
FEMALE	77	78.6%	10	10.2%	8	8.2%	2	2.0%	1	1.0%	0	0.0%
MALE	37	58.7%	12	19.0%	11	17.5%	2	3.2%	1	1.6%	0	0.0%
COMBINED	114	70.8%	22	13.7%	19	11.8%	4	2.5%	2	1.2%	0	0.0%
NOT RANKED=145												

MATRICULATED (97)												
	1ST DECILE		2ND DECILE		2ND QUINTILE		3RD QUINTILE		4TH QUINTILE		5TH QUINTILE	
	No.	%	No.	%	No.	%	No.	%	No.	%	No.	%
FEMALE	20	69.0%	3	10.3%	4	13.8%	1	3.4%	1	3.4%	0	0.0%
MALE	6	30.0%	5	25.0%	7	35.0%	1	5.0%	1	5.0%	0	0.0%
COMBINED	26	53.1%	8	16.3%	11	22.4%	2	4.1%	2	4.1%	0	0.0%
NOT RANKED=48												

**CHART XVIII
FIRST-YEAR CLASS, 2009 - MULTICULTURAL
(excludes students who did not self identify)
AVERAGE STANDARDIZED TEST RESULTS**

SAT

	APPLIED			ADMITTED			MATRICULATED		
	Critical Reading	Math	Number	Critical Reading	Math	Number	Critical Reading	Math	Number
FEMALE	622	618	186	657	651	95	619	614	31
MALE	616	638	172	662	674	77	630	624	25
COMBINED	619	627	358	660	661	172	624	619	56

ACT

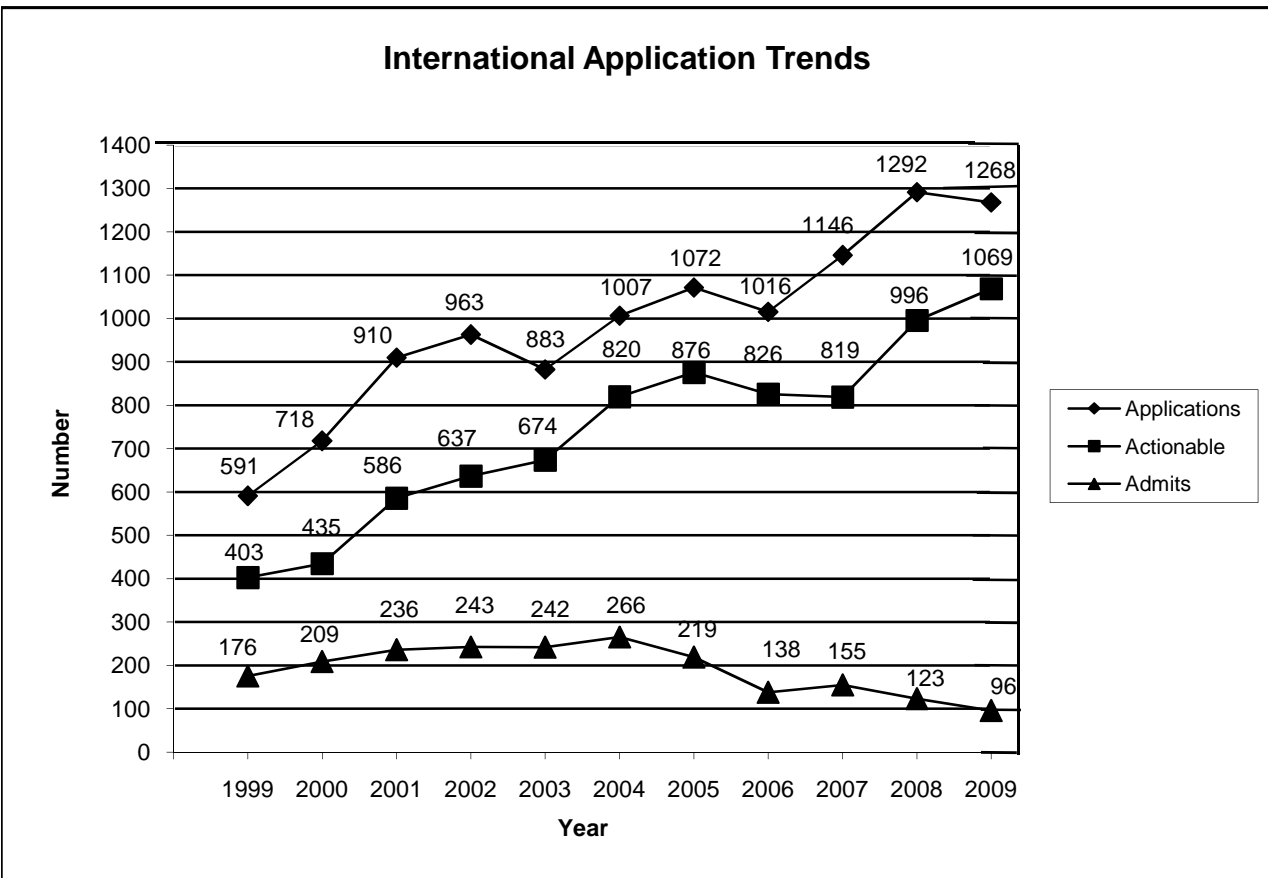
	APPLIED		ADMITTED		MATRICULATED	
	COM	NUM	COM	NUM	COM	NUM
FEMALE	27.0	172	28.8	89	27.6	25
MALE	27.8	111	29.3	45	28.3	16
COMBINED	27.3	283	28.9	134	27.9	41

ACT KEY: COM=Composite, NUM=Number

CHART XIX
FIRST-YEAR AND TRANSFER STATISTICS - INTERNATIONAL
FALL SEMESTERS 1999-2009

Includes only students who are citizens of other countries
 U.S. permanent residents and dual citizens are not included.

Year	Inquiries	Applications	Actionable	Admits	Matriculants
1999	2241	591	403	176	38
2000	2572	718	435	209	43
2001	3284	910	586	236	62
2002	3811	963	637	243	50
2003	4309	883	674	242	54
2004	4542	1007	820	266	60
2005	3402	1072	876	219	48
2006	2717	1016	826	138	38
2007	2897	1146	819	155	64
2008	2575	1292	996	123	53
2009	2728	1268	1069	96	49



Forty-nine (49) new international students enrolled, including one exchange student, from the following countries: Brazil, Bulgaria, Colombia, Costa Rica, Czech Republic, Ecuador, Germany, Ghana, Greece, Guatemala, Hungary, India, Iraq, Jamaica, Japan, Kazakhstan, Mexico, Nepal, Nigeria, P.R. China, Poland, Republic of Korea, Serbia, South Africa, Tunisia, Turkey, United Kingdom, Vietnam, and Zimbabwe.

CHART XX
FIRST-YEAR CLASS, 2009 - INTERNATIONAL
SECONDARY SCHOOL CLASS RANK

APPLIED QUINTILES (1167)										
	I		II		III		IV		V	
FEMALE	240		20		9		3		3	
MALE	232		18		8		0		0	
COMBINED	472	88.6%	38	7.1%	17	3.2%	3	0.6%	3	0.6%
NOT RANKED=634										

ADMITTED QUINTILES (94)										
	I		II		III		IV		V	
FEMALE	20		2		0		0		0	
MALE	10		3		0		0		0	
COMBINED	30	85.7%	5	14.3%	0	0.0%	0	0.0%	0	0.0%
NOT RANKED=59										

MATRICULATED QUINTILES (48)										
	I		II		III		IV		V	
FEMALE	13		1		0		0		0	
MALE	4		1		0		0		0	
COMBINED	17	89.5%	2	10.5%	0	0.0%	0	0.0%	0	0.0%
NOT RANKED=29										

**CHART XXI
FIRST-YEAR CLASS, 2009 - INTERNATIONAL
AVERAGE TEST RESULTS**

TEST OF ENGLISH AS A FOREIGN LANGUAGE (TOEFL)

	APPLIED		ADMITTED		MATRICULATED	
	TOEFL	Number	TOEFL	Number	TOEFL	Number
FEMALE	102	346	105	26	104	19
MALE	103	278	107	22	107	12
COMBINED	103	624	106	48	105	31
NOT INCLUDED		543		46		17

All TOEFL scores have been converted to the
internet-based scale.

**CHART XXII
FIRST-YEAR CLASS, 2009 - INTERNATIONAL
AVERAGE STANDARDIZED TEST RESULTS**

SAT

	APPLIED			ADMITTED			MATRICULATED		
	Critical Reading	Math	Number	Critical Reading	Math	Number	Critical Reading	Math	Number
FEMALE	587	694	527	618	688	45	602	690	26
MALE	588	708	490	628	714	44	603	710	19
COMBINED	587	701	1017	623	701	89	603	698	45

ACT

	APPLIED		ADMITTED		MATRICULATED	
	COM	NUM	COM	NUM	COM	NUM
FEMALE	26.6	21	33.0	1	33.0	1
MALE	28.7	15	30.0	2	0.0	0
COMBINED	27.5	36	31.0	3	33.0	1

ACT KEY: COM=Composite, NUM=Number

**CHART XXIII
FIRST-YEAR CLASS, 2009
PUBLIC AND NON-PUBLIC SCHOOLS**

		APPLIED	ADMITTED	% ADMITTED	MATRICULATED	%MATRICULATED
FEMALE	PUBLIC	1045	385	36.8%	120	31.2%
	NON-PUBLIC	970	215	22.2%	82	38.1%
	UNKNOWN	2	0	0.0%	0	0.0%
	Total	2017	600		202	

		APPLIED	ADMITTED	% ADMITTED	MATRICULATED	%MATRICULATED
MALE	PUBLIC	905	334	36.9%	113	33.8%
	NON-PUBLIC	884	174	19.7%	63	36.2%
	UNKNOWN	3	0	0.0%	0	0.0%
	Total	1792	508		176	

		APPLIED	ADMITTED	% ADMITTED	MATRICULATED	%MATRICULATED
COMBINED	PUBLIC	1950	719	36.9%	233	32.4%
	NON-PUBLIC	1854	389	21.0%	145	37.3%
	UNKNOWN	5	0	0.0%	0	0.0%
	Total	3809	1108		378	

**ILLUSTRATION E
ENROLLMENT BY HIGH SCHOOL TYPE
FIRST-YEAR CLASS, 2009**

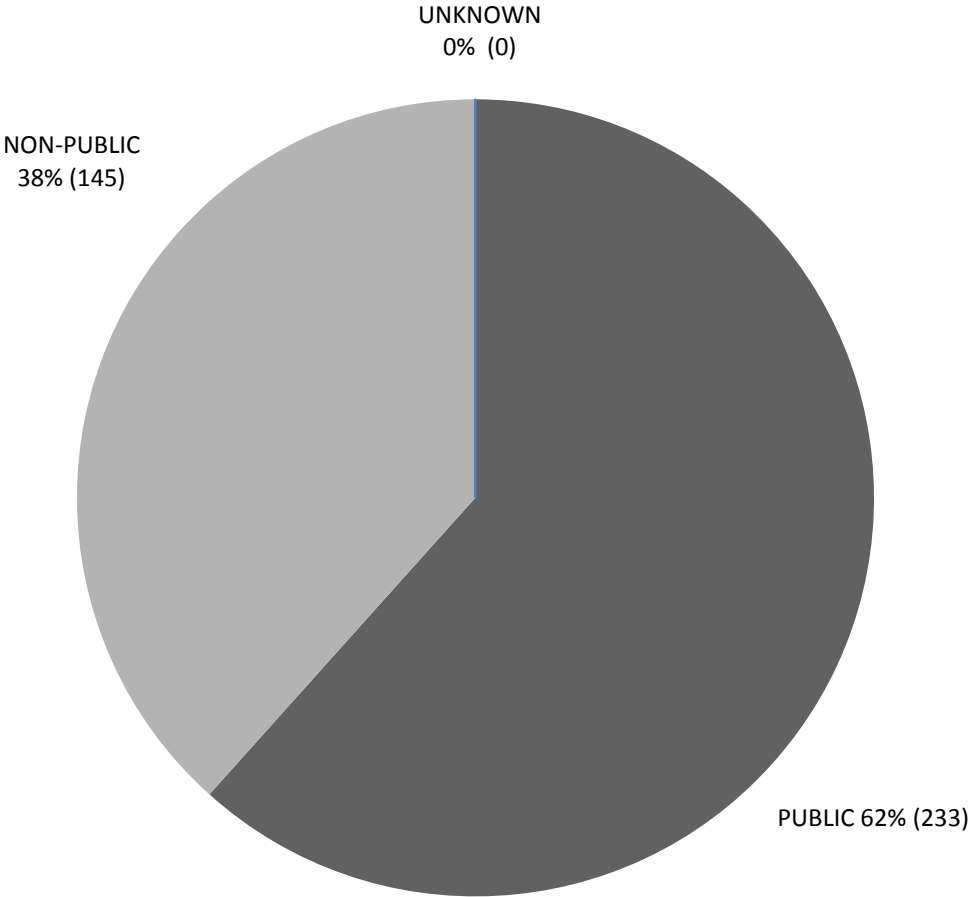


CHART XXIV
WAITING LIST STATISTICS - FALL SEMESTERS, 1999-2009

	NO. PLACED ON WAITING LIST	ADMITTED	% ADMITTED	MATRICULATED	% MATRICULATED
1999	144	45	31.3%	11	24.4%
2000	222	64	28.8%	31	48.4%
2001	152	68	44.7%	29	42.6%
2002	146	28	19.2%	11	39.3%
2003	244	1	0.4%	1	100.0%
2004	512	29	5.7%	22	75.9%
2005	603	31	5.1%	21	67.7%
2006	811	27	3.3%	23	85.2%
2007	743	16	2.2%	13	81.3%
2008	951	5	0.5%	3	60.0%
2009	1026	71	6.9%	40	56.3%

CHART XXV
FIRST-CHOICE MAJOR, 2005-2009
Top seven disciplines among all entering students

2005 (class of 408)		2006 (class of 426)		2007 (class of 448)		2008 (class of 464)		2009 (Class of 378)	
Biology	41	Biology	40	Biology	44	Biology	45	Biology	38
English	40	English	33	English	35	English	36	Economics	31
Political Science	20	Political Science	31	Psychology	24	Political Science	32	Psychology	25
Math/History	19	History	22	Chemistry	18	Physics	28	Political Science	24
Medicine	17	Psychology	22	Medicine	17	Economics	28	English	23
Psychology	16	Economics	18	Economics	16	Medicine	26	International Relations	19
Physics	15	Physics	17	Math	16	Psychology/Int'l Relations	25	History	18

Extracurricular Involvements of the Class of 2013

