

GRINNELL COLLEGE



2008
REPORT ON ADMISSION
AT GRINNELL COLLEGE

PREPARED BY

The Grinnell College Office of Admission

TABLE OF CONTENTS

Introduction	1-2
CHART I	Fall Semester Admission Statistics (Applied, Admitted, Matriculated), 1988-2008.....	3
CHART II	Early Decision Statistics, 1988-2008.....	4
CHART III	Regular Decision Statistics, 1988-2008	5
CHART IV	First-Year, Regular Decision Statistics, 1988-2008	6
CHART V	Transfer Statistics, 1998-2008	7
CHART VI	Spring Semester Admission Statistics, 1988-2008	8
CHART VII	Male/Female Matriculants, 1988-2008.....	9
CHART VIII	Admission Statistics (Gender) for Fall Semester, 2008	10
CHART IX	Secondary School Class Rank by Quintile, 1988-2008	11
CHART X	Secondary School Class Rank, First-Year Class.....	12
ILLUSTRATION A	Quality of First-Year Class by High School Rank.....	13
CHART XI	Average SAT and ACT Results, First-Year Class.....	14
CHART XII	SAT Score Distribution, First-Year Class	15-16
CHART XIII	ACT Score Distribution, First-Year Class.....	17
ILLUSTRATION B	Yield and Composition of First-Year Class by Admission Rating	18
CHART XIV	Average SAT Results, All Matriculants, 1988-2008	19
CHART XV	Geographic Distribution by Home State (Applicants, Admits and Matriculants, 2003-2008)	20-21
ILLUSTRATION D	Students Enrolled by Geographic Region (Home State)	22
CHART XVI	U.S. Students of Color, Enrollment History, 1998-2008.....	23
ILLUSTRATION E	Ethnic Composition of Entering Class.....	24
CHART XVII	Secondary School Class Rank, First-Year Class, Multicultural	25
CHART XVIII	Average SAT and ACT Results, First-Year Class, Multicultural	26
CHART XIX	International Report, Fall 2008.....	27
CHART XX	Secondary School Class Rank, First-Year Class, International.....	28

CHART XXI	Average TOEFL Results, First-Year Class, International	29
CHART XXII	Average SAT and ACT Results, First-Year Class, International.....	30
CHART XXIII	High School Type, by Gender, First-Year Class	31
ILLUSTRATION F	Enrollment by High School Type, First-Year Class	32
CHART XXIV	Waiting List Action, 1998-2008	33
CHART XXV	First-Choice Major, Entering Class, 2004-2008	34
CHART XXVI	Extracurricular Profile, First-Year Class	35

OVERVIEW

I'm pleased once again to share the results of last year's efforts to recruit the new class entering in the fall of 2008. This comprehensive admission report provides important information about admission to Grinnell College for both the class entering in the fall of 2008 and in prior years. Additional information on Admission and Financial Aid outcomes can be found in the annual summaries for the Student-Faculty Committee on Admission and Financial Aid and in the Fact Book published by the Office of Institutional Research.

For the class entering in the fall of 2008 recruitment results were augmented by generous new financial aid policies which increased the college's financial aid budget from \$25 million to \$30 million. Among these improvements were adoption of a \$2,000 packaged loan cap policy and the indexing of merit awards.

The entering first-year class for fall 2008 was a large one as significantly more students chose to take the college up on its offer of admission and an unusually low number of students "melted" during the summer months. At the official fall census date, the first-year class numbered 464 new Grinnellians.

Other highlights of the entering class include:

- The largest number of first-year applications (3888) as well as total applications (4057).
- The most selective year on record with a 34.2% acceptance rate.
- The largest Early Decision pool on record at 200 applicants.
- One of the highest yields (percent of those admitted who enroll) at 33.7%, an increase of 5% over the prior year.
- The largest ever number of new students of color at 105, and the largest percentage (22.4%).
- A well balanced class geographically, befitting our recognition as a national liberal arts college, with 47% of the students from the Midwest, 9% from the South, 15% from the West, 17% from the Northeast, and 11% international.

On behalf of the entire enrollment division, I extend our thanks to the faculty, students, administrators, alumni, trustees and parents who formally or informally participated in the college's effort to attract and enroll such a talented and sought after class to Grinnell last year. Seeking out and encouraging local prospective students to consider Grinnell, an impromptu tour of a campus building or invitation to a meal, making time to discuss Grinnell with a family – these and countless other ways our college community helps prospective students understand Grinnell's distinctive education make a significant difference in attracting interesting and talented students to Grinnell. Thank you for such able and welcome assistance.

Finally, I'd like to again recognize Connie Newport for her good work in compiling the information contained in this annual report.

Seth Allen

Dean of Admission and Financial Aid

**CHART I
FALL SEMESTER ADMISSION STATISTICS
(APPLIED, ADMITTED, MATRICULATED)
1988-2008**

	Applied	Admitted	% Admitted	Matriculated	% Matriculated
1988	1955	1121	57.3%	386	34.4%
1989	1881	1238	65.8%	399	32.2%
1990	1755	1184	67.5%	386	32.6%
1991	1717	1056	61.5%	373	35.3%
1992	2015	1225	60.8%	348	28.4%
1993	2212	1510	68.3%	489	32.4%
1994	2299	1250	54.4%	369	29.5%
1995	2170	1463	67.4%	367	25.1%
1996	2120	1397	65.9%	393	28.1%
1997	2918	1472	50.4%	465	31.6%
1998	2832	1231	43.5%	380	30.9%
1999	2476	1239	50.0%	356	28.7%
2000	2886	1303	45.1%	391	30.0%
2001	2960	1362	46.0%	401	29.4%
2002	3042	1405	46.2%	398	28.3%
2003	3058	1482	48.5%	418	28.2%
2004	3733	1543	41.3%	454	29.4%
2005	3923	1435	36.6%	408	28.4%
2006	3891	1443	37.1%	426	29.5%
2007	3973	1569	39.5%	448	28.6%
2008	4057	1388	34.2%	468	33.7%

Applied and Admitted totals include eight (8) deferrals to Fall 2009
and two (2) special exchange students.

CHART II
EARLY DECISION, FALL SEMESTERS, 1988-2008

	APPLIED	ADMITTED	% ADMITTED	MATRICULATED	% MATRICULATED
1988	163	113	69.3%	84	74.3%
1989	138	91	65.9%	65	71.4%
1990	172	132	76.7%	104	78.8%
1991	151	121	80.1%	92	76.0%
1992	138	108	78.3%	82	75.9%
1993	147	108	73.5%	78	72.2%
1994	142	103	72.5%	77	74.8%
1995	105	76	72.4%	66	86.8%
1996	71	53	74.6%	45	84.9%
1997	89	59	66.3%	51	86.4%
1998	91	64	70.3%	60	93.8%
1999	88	41	46.6%	35	85.4%
2000	78	49	62.8%	45	91.8%
2001	66	43	65.2%	39	90.7%
2002	72	57	79.2%	53	93.0%
2003	119	94	79.0%	88	93.6%
2004	134	97	72.4%	90	92.8%
2005	148	101	68.2%	95	94.1%
2006	161	129	80.1%	116	89.9%
2007	167	127	76.0%	115	90.6%
2008	200	137	68.5%	131	95.6%

**CHART III
REGULAR DECISION, FALL SEMESTERS, 1988-2008
ALL NEW STUDENTS - FIRST-YEAR AND TRANSFER**

	APPLIED	ADMITTED	% ADMITTED	MATRICULATED	% MATRICULATED
1988	1792	1008	56.3%	302	30.0%
1989	1743	1147	65.8%	334	29.1%
1990	1583	1052	66.5%	282	26.8%
1991	1566	935	59.7%	281	30.1%
1992	1877	1117	59.5%	266	23.8%
1993	2065	1402	67.9%	408	29.1%
1994	2157	1147	53.2%	292	25.5%
1995	2065	1387	67.2%	301	21.7%
1996	2049	1344	65.6%	348	25.9%
1997	2829	1413	49.9%	414	29.3%
1998	2754	1167	42.4%	320	27.4%
1999	2412	1198	49.7%	321	26.8%
2000	2808	1254	44.7%	346	27.6%
2001	2894	1319	45.6%	362	27.4%
2002	2970	1348	45.4%	345	25.6%
2003	2939	1388	47.2%	330	23.8%
2004	3599	1446	40.2%	364	25.2%
2005	3775	1334	35.3%	313	23.5%
2006	3730	1314	35.2%	310	23.6%
2007	3806	1442	37.9%	333	23.1%
2008	3855	1249	32.4%	335	26.8%

Applied and Admitted totals include eight (8) deferrals to Fall 2009.

**CHART IV
FIRST-YEAR STATISTICS - REGULAR DECISION
FALL SEMESTERS, 1998-2008**

	APPLIED	ADMITTED	% ADMITTED	MATRICULATED	% MATRICULATED
1998	2552	1108	43.4%	292	26.4%
1999	2217	1134	51.2%	290	25.6%
2000	2589	1200	46.3%	346	28.8%
2001	2635	1238	47.0%	321	25.9%
2002	2706	1279	47.3%	316	24.7%
2003	2730	1349	49.4%	317	23.5%
2004	3418	1404	41.1%	345	24.6%
2005	3582	1297	36.2%	294	22.7%
2006	3542	1272	35.9%	290	22.8%
2007	3610	1407	39.0%	312	22.2%
2008	3688	1246	33.8%	333	26.7%

Applied and Admitted totals include eight (8) deferrals to Fall 2009.

CHART V
TRANSFER STATISTICS, FALL SEMESTERS, 1998-2008

	APPLIED	ADMITTED	% ADMITTED	MATRICULATED	% MATRICULATED
1998	193	51	26.4%	23	45.1%
1999	195	64	32.8%	31	48.4%
2000	219	54	24.7%	26	48.1%
2001	259	81	31.3%	41	50.6%
2002	264	69	26.1%	29	42.0%
2003	209	39	18.7%	13	33.3%
2004	181	42	23.2%	19	45.2%
2005	193	37	19.2%	19	51.4%
2006	188	42	22.3%	20	47.6%
2007	196	35	17.9%	21	60.0%
2008	169	5	3.0%	4	80.0%

**CHART VI
SPRING ADMISSION STATISTICS, 1988-2008**

	APPLIED	ADMITTED	% ADMITTED	MATRICULATED	% MATRICULATED
1988	19	14	73.7%	10	71.4%
1989	18	2	11.1%	2	100.0%
1990	12	2	16.7%	2	100.0%
1991	34	26	76.5%	17	65.4%
1992	19	8	42.1%	7	87.5%
1993	53	41	77.4%	18	43.9%
1994	13	2	15.4%	2	100.0%
1995	16	5	31.3%	4	80.0%
1996	16	10	62.5%	7	70.0%
1997	26	7	26.9%	6	85.7%
1998	35	10	28.6%	6	60.0%
1999	11	7	63.6%	3	42.9%
2000	21	6	28.6%	5	83.3%
2001	28	8	28.6%	5	62.5%
2002	31	15	48.4%	8	53.3%
2003	17	9	52.9%	7	77.8%
2004	38	20	52.6%	10	50.0%
2005	34	25	73.5%	10	40.0%
2006	28	17	60.7%	9	52.9%
2007	19	12	63.2%	7	58.3%
2008	17	17	100.0%	6	35.3%

**CHART VII
TABLE OF MALE/FEMALE MATRICULANTS
FALL SEMESTERS, 1988-2008**

	MEN	% OF ENTERING CLASS	WOMEN	% OF ENTERING CLASS	TOTAL MATRICULATED
1988	206	53.4%	180	46.6%	386
1989	190	47.6%	209	52.4%	399
1990	197	51.0%	189	49.0%	386
1991	159	42.6%	214	57.4%	373
1992	149	42.8%	199	57.2%	348
1993	235	48.1%	254	51.9%	489
1994	161	43.9%	206	56.1%	367
1995	170	46.3%	197	53.7%	367
1996	161	41.0%	232	59.0%	393
1997	200	43.0%	265	57.0%	465
1998	168	44.2%	212	55.8%	380
1999	172	48.3%	184	51.7%	356
2000	164	41.9%	227	58.1%	391
2001	189	47.1%	212	52.9%	401
2002	178	44.7%	220	55.3%	398
2003	195	46.7%	223	53.3%	418
2004	205	45.2%	249	54.8%	454
2005	193	47.3%	215	52.7%	408
2006	208	48.8%	218	51.2%	426
2007	206	46.0%	242	54.0%	448
2008	216	46.2%	252	53.8%	468

Total matriculated includes two (2) special exchange students.

**CHART VIII
ADMISSION STATISTICS BY GENDER
FALL SEMESTER, 2008**

	Applied	Actionable	Admitted	% Admitted	Matriculated	% Matriculated	Deny	Withdrew	Incomplete	Admit/ Withdrew	Paid/ Withdrew
First-Year (Male)	1858	1503	613	40.8%	213	34.7%	873	86	286	385	10
First-Year (Female)	2030	1714	770	44.9%	251	32.6%	911	110	239	509	7
Transfer (Male)	79	41	2	4.9%	1	50.0%	39	4	34	1	0
Transfer (Female)	88	45	1	2.2%	1	100.0%	44	4	39	0	0
Special Exch. (Male)	2	2	2	100.0%	2	100.0%	0	0	0	0	0
Special Exch. (Female)	0	0	0	0.0%	0	0.0%	0	0	0	0	0
TOTALS	4057	3305	1388	42.0%	468	33.7%	1867	204	598	895	17

Applied and Admitted totals include eight (8) deferrals to Fall 2009.

**CHART IX
SECONDARY SCHOOL CLASS RANK BY QUINTILE - ALL MATRICULANTS
FALL SEMESTERS, 1988-2008**

	I	%	II	%	III	%	IV	%	V	%	UNKNOWN	TOTAL
1988	289	83.0%	45	12.9%	10	2.9%	3	0.9%	1	0.3%	38	386
1989	281	82.4%	42	12.3%	15	4.4%	3	0.9%	0	0.0%	58	399
1990	256	78.0%	55	16.8%	13	3.9%	3	0.9%	1	0.3%	58	386
1991	248	79.0%	44	14.0%	16	5.1%	4	1.3%	2	0.6%	59	373
1992	242	85.5%	28	9.9%	9	3.2%	3	1.1%	1	0.4%	65	348
1993	340	84.8%	41	10.2%	13	3.2%	5	1.2%	2	0.5%	82	483
1994	267	86.1%	35	11.3%	6	2.0%	1	0.3%	1	0.3%	59	369
1995	237	80.6%	49	16.7%	5	1.7%	2	0.7%	1	0.3%	73	367
1996	259	82.5%	43	13.7%	12	3.8%	0	0.0%	0	0.0%	79	393
1997	311	86.4%	46	12.8%	2	0.5%	1	0.3%	0	0.0%	105	465
1998	275	86.2%	38	11.9%	4	1.3%	1	0.3%	1	0.3%	61	380
1999	231	79.9%	54	18.7%	4	1.4%	0	0.0%	0	0.0%	69	358
2000	252	85.7%	38	12.9%	3	1.0%	1	0.3%	0	0.0%	97	391
2001	240	83.3%	43	14.9%	3	1.0%	2	0.7%	0	0.0%	113	401
2002	215	81.7%	41	15.6%	4	1.5%	1	0.4%	2	0.8%	135	398
2003	247	81.3%	50	16.4%	7	2.3%	0	0.0%	0	0.0%	114	418
2004	283	88.2%	36	11.2%	2	0.6%	0	0.0%	0	0.0%	133	454
2005	257	89.2%	22	7.7%	6	2.1%	3	1.0%	0	0.0%	120	408
2006	238	85.0%	36	12.9%	6	2.1%	0	0.0%	0	0.0%	146	426
2007	257	88.3%	31	10.7%	1	0.3%	2	0.7%	0	0.0%	157	448
2008	220	84.0%	36	13.7%	5	1.9%	1	0.4%	0	0.0%	206	468

Percentages based on a total of 262 matriculants whose class rank was reported.

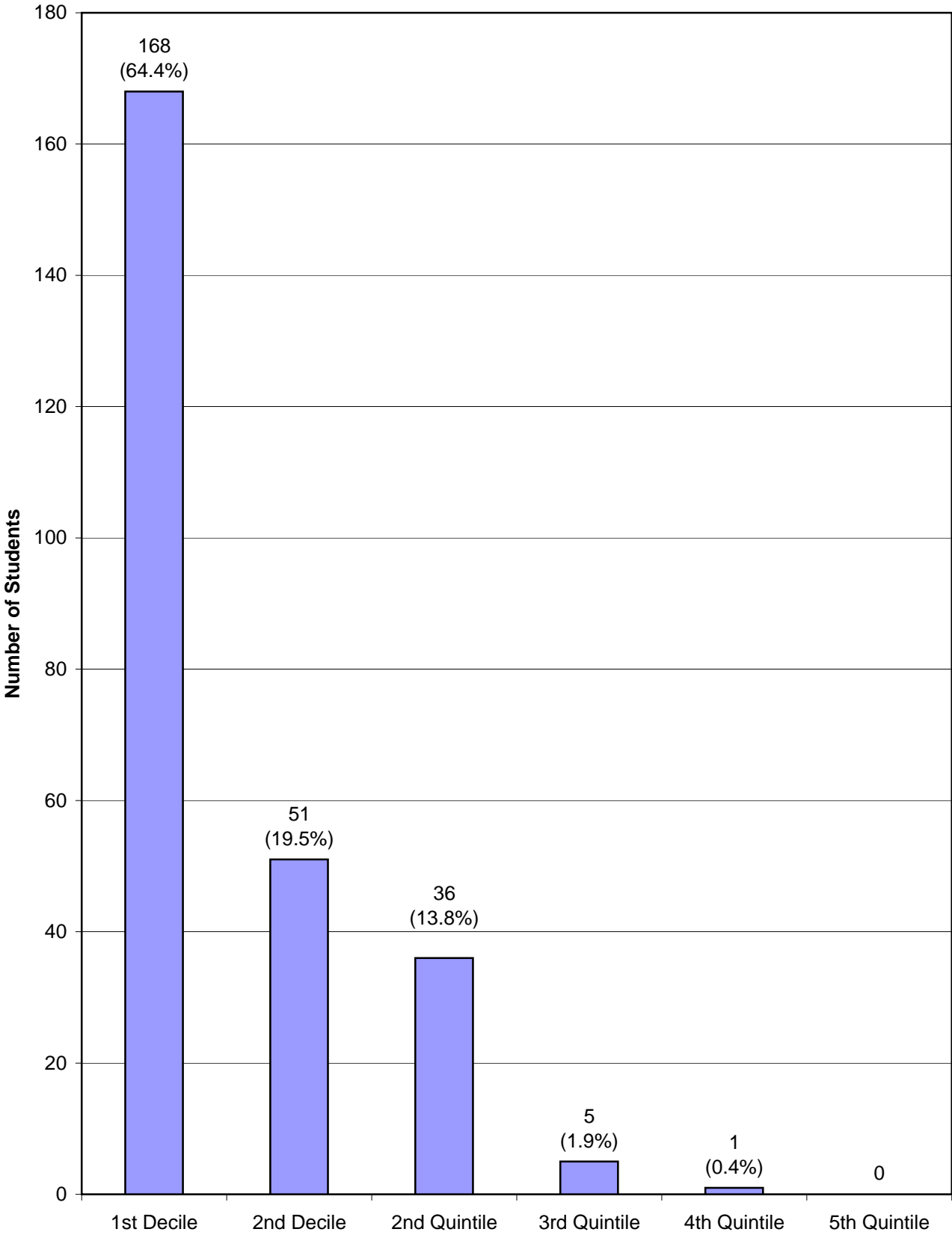
CHART X
FIRST-YEAR CLASS, FALL 2008
SECONDARY SCHOOL CLASS RANK - FIRST AND SECOND DECILES, SECOND THROUGH FIFTH QUINTILES

APPLIED (3888)												
	1ST DECILE		2ND DECILE		2ND QUINTILE		3RD QUINTILE		4TH QUINTILE		5TH QUINTILE	
	No.	%	No.	%	No.	%	No.	%	No.	%	No.	%
FEMALE	710	69.6%	162	15.9%	116	11.4%	19	1.9%	11	1.1%	2	0.2%
MALE	538	58.6%	167	18.2%	157	17.1%	40	4.4%	15	1.6%	1	0.1%
COMBINED	1248	64.4%	329	17.0%	273	14.1%	59	3.0%	26	1.3%	3	0.2%
NOT RANKED=1950												

ADMITTED (1383)												
	1ST DECILE		2ND DECILE		2ND QUINTILE		3RD QUINTILE		4TH QUINTILE		5TH QUINTILE	
	No.	%	No.	%	No.	%	No.	%	No.	%	No.	%
FEMALE	323	80.0%	51	12.6%	26	6.4%	2	0.5%	2	0.5%	0	0.0%
MALE	242	69.9%	67	19.4%	32	9.2%	5	1.4%	0	0.0%	0	0.0%
COMBINED	565	75.3%	118	15.7%	58	7.7%	7	0.9%	2	0.3%	0	0.0%
NOT RANKED=633												

MATRICULATED (464)												
	1ST DECILE		2ND DECILE		2ND QUINTILE		3RD QUINTILE		4TH QUINTILE		5TH QUINTILE	
	No.	%	No.	%	No.	%	No.	%	No.	%	No.	%
FEMALE	91	66.9%	25	18.4%	18	13.2%	1	0.7%	1	0.7%	0	0.0%
MALE	77	61.6%	26	20.8%	18	14.4%	4	3.2%	0	0.0%	0	0.0%
COMBINED	168	64.4%	51	19.5%	36	13.8%	5	1.9%	1	0.4%	0	0.0%
NOT RANKED=203												

ILLUSTRATION A
QUALITY OF FIRST-YEAR CLASS
BY HIGH SCHOOL RANK IN CLASS - FALL 2008



**CHART XI
FIRST-YEAR CLASS, FALL 2008
AVERAGE STANDARDIZED TEST RESULTS**

SCHOLASTIC ASSESSMENT TEST - SAT

	APPLIED			ADMITTED			MATRICULATED		
	Critical Reading	Math	Number	Critical Reading	Math	Number	Critical Reading	Math	Number
FEMALE	649	674	1160	694	677	413	663	651	127
MALE	641	691	1111	690	695	345	675	674	120
COMBINED	645	682	2271	692	685	758	669	662	247

AMERICAN COLLEGE TEST - ACT

	APPLIED		ADMITTED		MATRICULATED	
	COM	NUM	COM	NUM	COM	NUM
FEMALE	29.6	687	30.8	353	30.0	124
MALE	29.9	531	30.7	267	30.4	92
COMBINED	29.7	1218	30.8	620	30.1	216

ACT KEY: COM=Composite, NUM=Number

CHART XII
FIRST-YEAR CLASS, FALL 2008
SAT SCORE DISTRIBUTION - CRITICAL READING

RANGE	GENDER	APPLIED	ADMITTED	DENIED	MATRICULATED	PERCENT OF CLASS *
	MALE	194	102	77	30	
750-800	FEMALE	213	127	67	24	
	COMBINED	407	229	144	54	21.9%
	MALE	201	82	99	26	
700-740	FEMALE	196	93	84	26	
	COMBINED	397	175	183	52	21.1%
	MALE	200	69	118	24	
650-690	FEMALE	220	89	113	29	
	COMBINED	420	158	231	53	21.5%
	MALE	172	40	112	16	
600-640	FEMALE	209	53	136	22	
	COMBINED	381	93	248	38	15.4%
	MALE	122	25	80	10	
550-590	FEMALE	134	27	92	13	
	COMBINED	256	52	172	23	9.3%
	MALE	106	13	73	7	
500-540	FEMALE	105	16	72	8	
	COMBINED	211	29	145	15	6.1%
	MALE	62	9	38	4	
450-490	FEMALE	43	4	34	2	
	COMBINED	105	13	72	6	2.4%
	MALE	33	4	22	3	
400-440	FEMALE	28	3	16	2	
	COMBINED	61	7	38	5	2.0%
	MALE	21	1	13	0	
Below 400	FEMALE	12	1	9	1	
	COMBINED	33	2	22	1	0.4%

* Based on number of scores submitted (247)

**CHART XII
FIRST-YEAR CLASS, FALL 2008
SAT SCORE DISTRIBUTION - MATH**

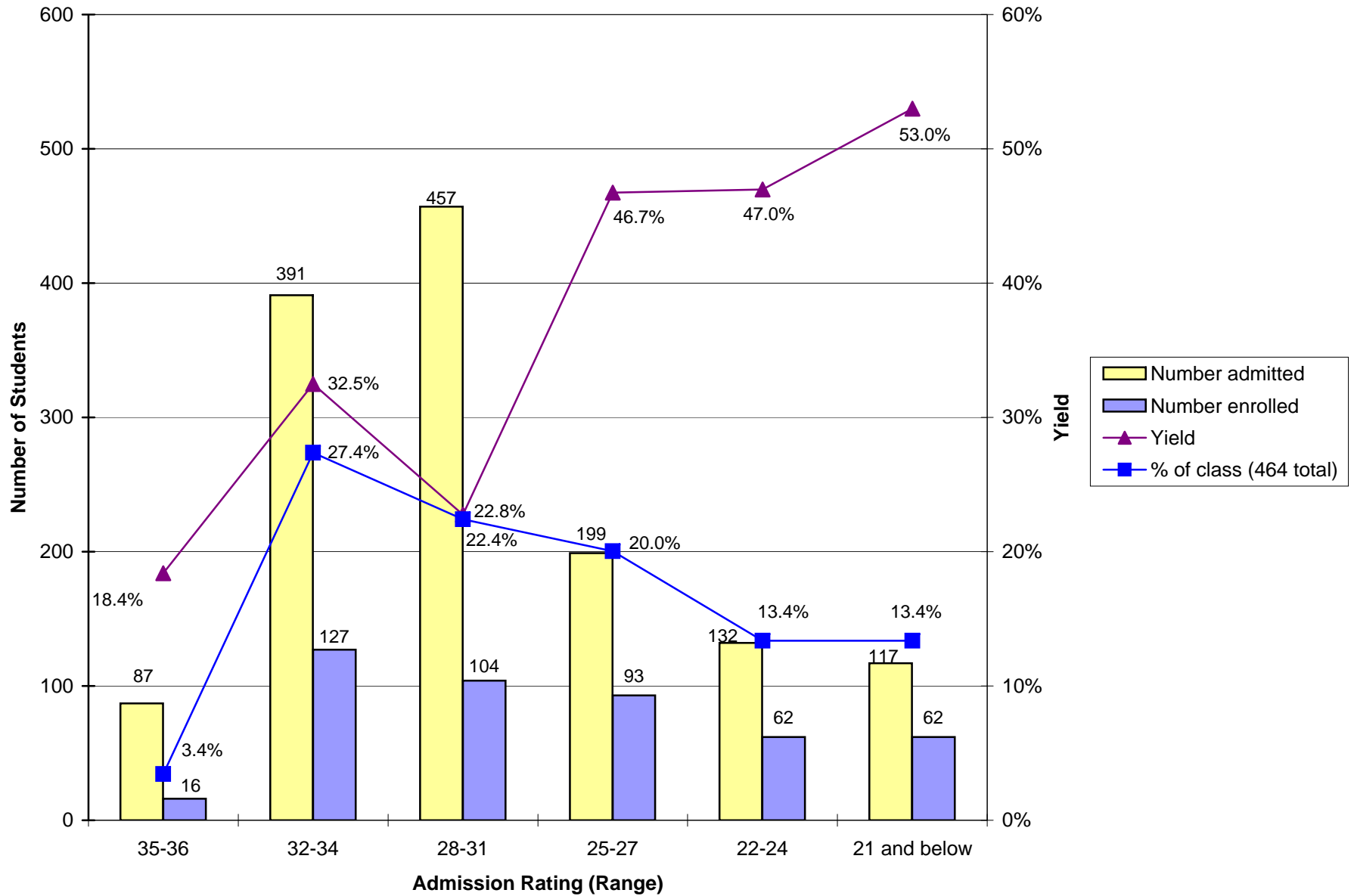
RANGE	GENDER	APPLIED	ADMITTED	DENIED	MATRICULATED	PERCENT OF CLASS *
	MALE	367	104	217	23	
750-800	FEMALE	312	83	190	11	
	COMBINED	679	187	407	34	13.8%
	MALE	209	76	111	20	
700-740	FEMALE	193	91	90	24	
	COMBINED	402	167	201	44	17.8%
	MALE	246	81	135	35	
650-690	FEMALE	271	124	115	44	
	COMBINED	517	205	250	79	32.0%
	MALE	143	47	82	25	
600-640	FEMALE	155	59	79	26	
	COMBINED	298	106	161	51	20.6%
	MALE	79	25	44	11	
550-590	FEMALE	114	35	68	10	
	COMBINED	193	60	112	21	8.5%
	MALE	35	9	21	3	
500-540	FEMALE	71	15	49	8	
	COMBINED	106	24	70	11	4.5%
	MALE	16	2	11	2	
450-490	FEMALE	27	4	21	3	
	COMBINED	43	6	32	5	2.0%
	MALE	10	1	7	1	
400-440	FEMALE	14	2	9	1	
	COMBINED	24	3	16	2	0.8%
	MALE	6	0	4	0	
Below 400	FEMALE	3	0	2	0	
	COMBINED	9	0	6	0	0.0%

**CHART XIII
FIRST-YEAR CLASS, 2008
ACT SCORE DISTRIBUTION**

COMPOSITE	GENDER	APPLIED	ADMITTED	DENIED	MATRICULATED	PERCENT OF CLASS *
	MALE	78	55	18	17	
34-36	FEMALE	78	66	7	11	
	COMBINED	156	121	25	28	13.0%
	MALE	135	74	52	19	
32-33	FEMALE	150	109	27	34	
	COMBINED	285	183	79	53	24.5%
	MALE	119	67	41	27	
30-31	FEMALE	170	80	71	27	
	COMBINED	289	147	112	54	25.0%
	MALE	82	33	39	16	
28-29	FEMALE	139	53	70	28	
	COMBINED	221	86	109	44	20.4%
	MALE	82	26	42	9	
24-27	FEMALE	108	33	62	20	
	COMBINED	190	59	104	29	13.4%
	MALE	25	10	10	3	
20-23	FEMALE	34	12	14	4	
	COMBINED	59	22	24	7	3.2%
	MALE	7	2	5	1	
17-19	FEMALE	6	0	2	0	
	COMBINED	13	2	7	1	0.5%
	MALE	3	0	2	0	
BELOW 16	FEMALE	2	0	0	0	
	COMBINED	5	0	2	0	0.0%

* Based on number of scores submitted (216)

**ILLUSTRATION B
YIELD AND COMPOSITION OF 2008 FIRST-YEAR CLASS
BY ADMISSION RATING**



**CHART XIV
AVERAGE SAT RESULTS
ALL MATRICULANTS - FALL SEMESTERS, 1988-2008**

	SAT CRITICAL READING	SAT MATH
1988	611	646
1989	604	636
1990	602	634
1991	608	633
1992	596	634
1993	602	642
1994	606	653
1995	595	637
1996	673	646
1997	674	659
1998	674	664
1999	668	658
2000	673	660
2001	668	665
2002	675	660
2003	666	671
2004	684	683
2005	685	678
2006	673	665
2007	669	671
2008	669	662

BEGINNING IN 1996, SAT I SCORES ARE
REPORTED ON THE RECENTERED SCALE

CHART XV
DISTRIBUTION BY HOME STATE
APPLICANTS (A), ADMITS (AD) AND MATRICULANTS (M)

	2003			2004			2005			2006			2007			2008		
	A	AD	M	A	AD	M	A	AD	M	A	AD	M	A	AD	M	A	AD	M
ALABAMA	7	3	1	9	5	1	12	5	0	14	8	4	6	3	0	8	5	0
ALASKA	5	2	1	10	5	0	6	4	1	8	2	0	5	2	0	6	5	0
ARIZONA	31	19	2	30	11	4	44	16	0	33	14	2	47	18	1	28	11	5
ARKANSAS	23	8	3	29	12	1	11	5	0	13	6	2	14	6	1	16	10	3
CALIFORNIA	192	112	39	310	116	27	302	101	26	260	102	19	255	112	28	258	96	30
COLORADO	63	36	9	71	35	13	84	44	13	99	47	14	81	41	13	82	35	11
CONNECTICUT	26	11	5	29	13	5	34	13	5	39	18	6	45	20	5	30	15	5
DELAWARE	0	0	0	3	1	0	2	1	1	6	3	0	2	1	1	0	0	0
WASH. , DC	15	5	1	12	8	2	23	9	8	22	11	7	15	8	7	17	4	3
FLORIDA	31	18	6	30	11	1	42	12	3	77	21	5	60	21	3	43	21	7
GEORGIA	18	9	1	22	11	1	22	11	2	20	10	3	28	10	2	17	9	2
GUAM	0	0	0	0	0	0	0	0	0	1	1	0	1	0	0	1	0	0
HAWAII	9	6	4	26	13	1	26	18	6	14	7	3	25	17	4	29	14	3
IDAHO	7	4	2	4	1	0	9	3	0	5	2	0	4	2	1	7	3	1
ILLINOIS	345	186	50	409	177	57	421	178	47	400	185	65	380	197	60	400	171	57
INDIANA	46	30	4	46	30	10	38	21	7	46	33	9	38	19	5	41	18	7
IOWA	227	116	57	225	102	48	211	85	35	202	109	52	188	111	44	204	122	46
KANSAS	43	23	12	63	34	14	61	30	10	73	35	12	50	29	7	48	25	7
KENTUCKY	11	6	1	15	11	3	16	13	6	12	6	2	16	14	5	14	6	2
LOUISIANA	10	5	1	6	1	1	10	2	1	8	1	0	9	5	2	11	4	0
MAINE	9	6	3	13	8	3	19	10	2	13	5	1	14	4	1	13	6	1
MARYLAND	42	22	6	42	17	4	59	21	6	61	30	9	70	29	8	59	34	14
MASSACHUSETTS	53	26	7	78	30	9	84	31	6	95	38	8	92	40	9	90	39	13
MICHIGAN	57	29	11	51	22	8	57	25	6	57	24	6	60	29	4	44	17	7
MINNESOTA	148	100	28	197	98	36	237	108	48	212	92	24	217	128	37	237	115	43
MISSISSIPPI	19	9	4	28	10	3	19	9	3	31	11	0	21	8	2	14	7	0

**CHART XV
DISTRIBUTION BY HOME STATE
APPLICANTS (A), ADMITS (AD) AND MATRICULANTS (M)**

CHART XI, PAGE 2	2003			2004			2005			2006			2007			2008		
	A	AD	M	A	AD	M	A	AD	M	A	AD	M	A	AD	M	A	AD	M
MISSOURI	75	47	12	89	49	10	105	59	14	126	60	18	90	50	11	92	43	15
MONTANA	5	1	0	6	2	1	6	2	1	8	5	0	7	5	1	4	3	0
NEBRASKA	24	15	5	30	20	8	49	26	9	43	24	9	39	18	4	35	17	8
NEVADA	4	4	2	8	1	1	6	3	1	5	1	0	4	2	0	4	1	0
NEW HAMPSHIRE	7	1	0	15	4	0	10	3	2	9	6	1	11	5	1	13	3	1
NEW JERSEY	29	21	7	49	23	6	32	9	3	54	21	8	39	15	2	37	19	5
NEW MEXICO	20	10	1	24	16	5	32	16	6	26	10	2	27	17	1	23	11	2
NEW YORK	95	60	9	114	37	12	145	53	18	129	48	8	153	75	19	154	72	22
NORTH CAROLINA	16	7	0	19	8	3	17	8	4	22	15	2	22	11	2	24	12	3
NORTH DAKOTA	3	2	1	1	0	0	1	0	0	2	0	0	5	4	1	2	2	0
OHIO	61	39	14	72	45	13	75	35	8	68	30	13	74	36	6	47	22	10
OKLAHOMA	9	5	3	12	7	2	13	10	4	20	11	4	15	7	1	17	10	4
OREGON	35	24	3	71	43	13	63	29	9	72	45	14	65	34	8	69	33	7
PENNSYLVANIA	38	19	4	44	17	6	53	15	2	47	20	4	28	15	4	59	22	9
PUERTO RICO	0	0	0	3	1	0	0	0	0	3	0	0	0	0	0	3	2	0
RHODE ISLAND	1	1	0	4	2	1	2	0	0	6	2	1	3	1	0	6	5	1
SOUTH CAROLINA	6	3	1	9	7	2	5	3	1	5	1	0	5	0	0	0	0	0
SOUTH DAKOTA	5	5	1	14	12	6	7	2	0	15	11	2	13	7	4	8	8	2
TENNESSEE	31	21	3	27	14	5	26	13	2	19	8	2	33	20	7	20	14	3
TEXAS	100	52	12	146	58	13	130	46	6	129	41	18	129	57	17	97	46	14
UTAH	11	7	2	12	8	3	14	9	1	13	8	1	13	6	2	13	8	0
VERMONT	3	1	0	6	3	0	12	6	3	11	4	1	14	9	3	15	8	5
VIRGIN ISLANDS	0	0	0	0	0	0	1	0	0	0	0	0	2	0	0	0	0	0
VIRGINIA	25	11	6	28	16	3	36	16	6	39	17	1	43	18	6	44	17	6
WASHINGTON	44	25	2	92	57	15	83	29	5	84	36	14	80	40	5	87	35	10
WEST VIRGINIA	6	5	2	4	3	0	3	1	0	6	5	1	6	3	1	2	2	1
WISCONSIN	87	56	24	99	48	14	101	43	12	114	45	9	89	50	12	86	36	15
WYOMING	7	4	2	6	5	3	4	1	0	7	4	1	9	4	1	2	2	2

ILLUSTRATION D
FIRST-YEAR STUDENTS ENROLLED BY GEOGRAPHIC REGION
(HOME STATE)

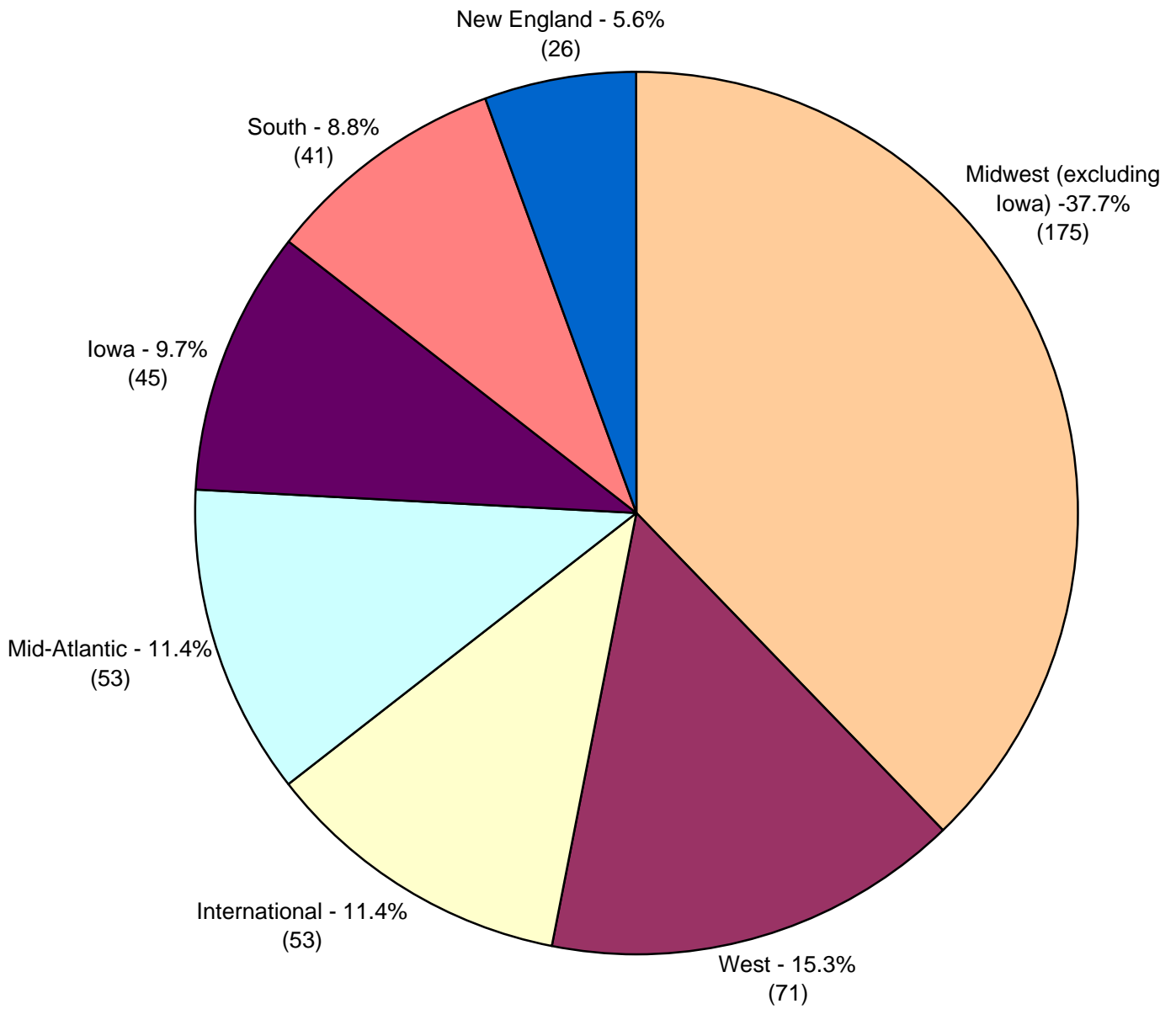


CHART XVI
U.S. STUDENTS OF COLOR (FIRST-YEAR AND TRANSFER)
ENROLLMENT HISTORY, 1998-2008

	<i>Class size</i>	<i>U.S. Multicultural</i>	<i>Percent of Class</i>	<i>African-American</i>	<i>Percent of Class</i>	<i>Latino/a</i>	<i>Percent of Class</i>	<i>Asian-American</i>	<i>Percent of Class</i>	<i>Native American</i>	<i>Percent of Class</i>	<i>**Unknown ethnicity</i>	<i>Percent of Class</i>
1998	380	44	11.6%	11	2.9%	14	3.7%	19	5.0%	0	0.0%	32	8.4%
1999	356	54	15.2%	11	3.1%	22	6.2%	19	5.3%	2	0.6%	28	7.9%
2000	391	50	12.8%	18	4.6%	15	3.8%	15	3.8%	2	0.5%	43	11.0%
2001	401	53	13.2%	19	4.7%	13	3.2%	17	4.2%	4	1.0%	39	9.7%
2002	398	38	9.5%	7	1.8%	10	2.5%	19	4.8%	2	0.5%	39	9.8%
2003	418	71	17.0%	19	4.5%	21	5.0%	25	6.0%	6	1.4%	13	3.1%
2004	454	61	13.4%	18	4.0%	17	3.7%	25	5.5%	1	0.2%	27	5.9%
2005	408	83	20.3%	25	6.1%	27	6.6%	31	7.6%	0	0.0%	24	5.9%
2006	426	80	18.8%	22	5.2%	24	5.6%	32	7.5%	2	0.5%	26	6.1%
2007	448	88	19.6%	23	5.1%	27	6.0%	35	7.8%	3	0.7%	30	6.7%
2008	468	105	22.4%	29	6.2%	38	8.1%	36	7.7%	2	0.4%	42	9.0%

**Beginning in 1998, there was a change in how this category was reported.

ILLUSTRATION E
ETHNIC COMPOSITION OF ENTERING CLASS (FIRST-YEAR AND TRANSFER)
FALL 2008

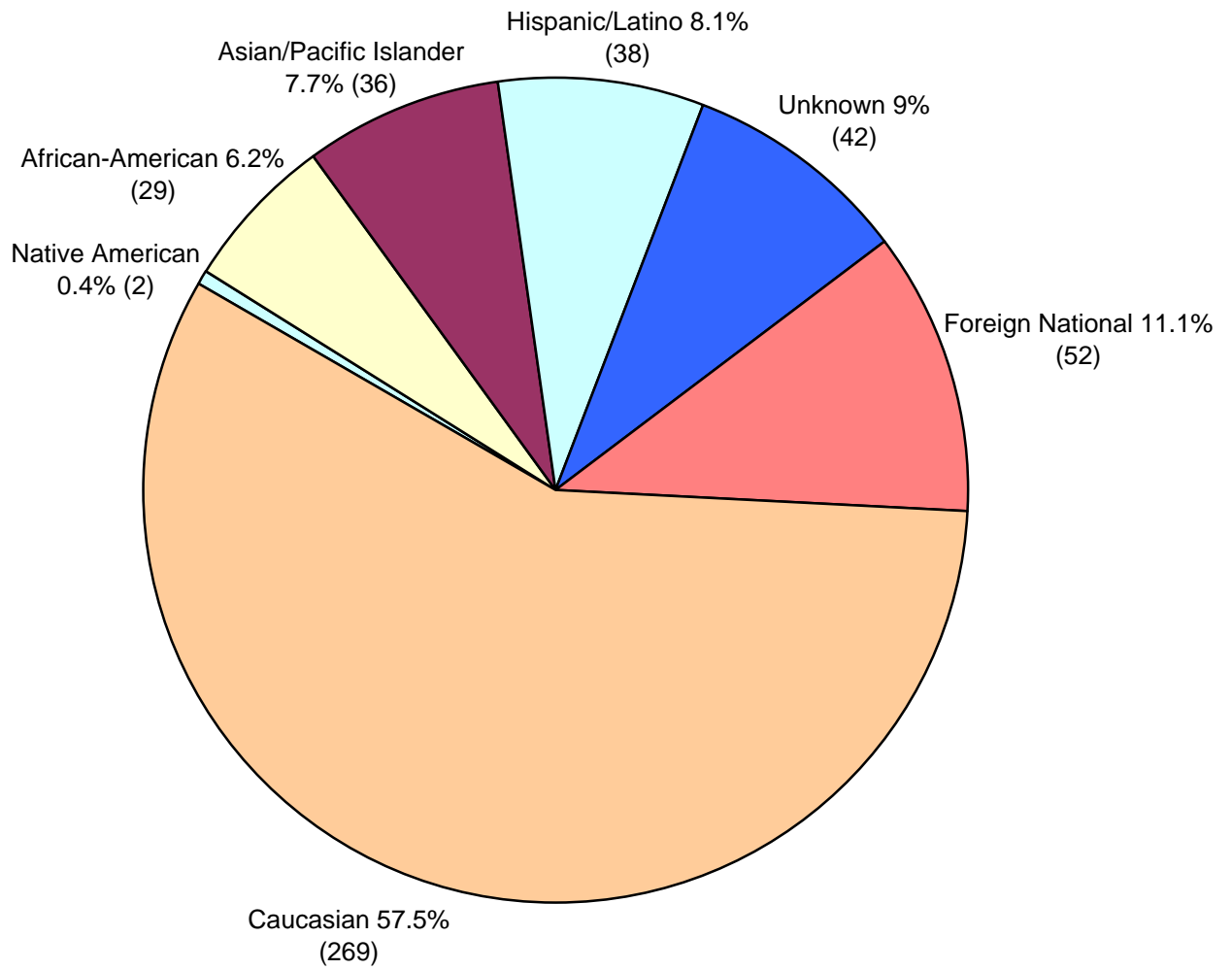


CHART XVII
FIRST-YEAR CLASS, 2008 - MULTICULTURAL (excludes students who did not self identify)
SECONDARY SCHOOL CLASS RANK - FIRST AND SECOND DECILES, SECOND THROUGH FIFTH QUINTILES

APPLIED (625)												
	1ST DECILE		2ND DECILE		2ND QUINTILE		3RD QUINTILE		4TH QUINTILE		5TH QUINTILE	
	No.	%	No.	%	No.	%	No.	%	No.	%	No.	%
FEMALE	94	62.2%	29	19.2%	24	15.9%	1	0.7%	3	2.0%	0	0.0%
MALE	62	42.5%	30	20.5%	37	25.3%	13	8.9%	4	2.7%	0	0.0%
COMBINED	156	52.5%	59	19.9%	61	20.5%	14	4.7%	7	2.4%	0	0.0%
NOT RANKED=328												

ADMITTED (344)												
	1ST DECILE		2ND DECILE		2ND QUINTILE		3RD QUINTILE		4TH QUINTILE		5TH QUINTILE	
	No.	%	No.	%	No.	%	No.	%	No.	%	No.	%
FEMALE	67	72.8%	17	18.5%	7	7.6%	0	0.0%	1	1.1%	0	0.0%
MALE	50	57.5%	22	25.3%	13	14.9%	2	2.3%	0	0.0%	0	0.0%
COMBINED	117	65.4%	39	21.8%	20	11.2%	2	1.1%	1	0.6%	0	0.0%
NOT RANKED=165												

MATRICULATED (105)												
	1ST DECILE		2ND DECILE		2ND QUINTILE		3RD QUINTILE		4TH QUINTILE		5TH QUINTILE	
	No.	%	No.	%	No.	%	No.	%	No.	%	No.	%
FEMALE	18	58.1%	8	25.8%	4	12.9%	0	0.0%	1	3.2%	0	0.0%
MALE	15	55.6%	4	14.8%	6	22.2%	2	7.4%	0	0.0%	0	0.0%
COMBINED	33	56.9%	12	20.7%	10	17.2%	2	3.4%	1	1.7%	0	0.0%
NOT RANKED=47												

CHART XVIII
FIRST-YEAR CLASS, 2008 - MULTICULTURAL
(excludes students who did not self identify)
AVERAGE STANDARDIZED TEST RESULTS

SAT

	APPLIED			ADMITTED			MATRICULATED		
	Critical Reading	Math	Number	Critical Reading	Math	Number	Critical Reading	Math	Number
FEMALE	643	633	151	659	646	102	616	597	28
MALE	632	645	161	662	663	95	610	609	30
COMBINED	637	639	312	660	654	197	613	603	58

ACT

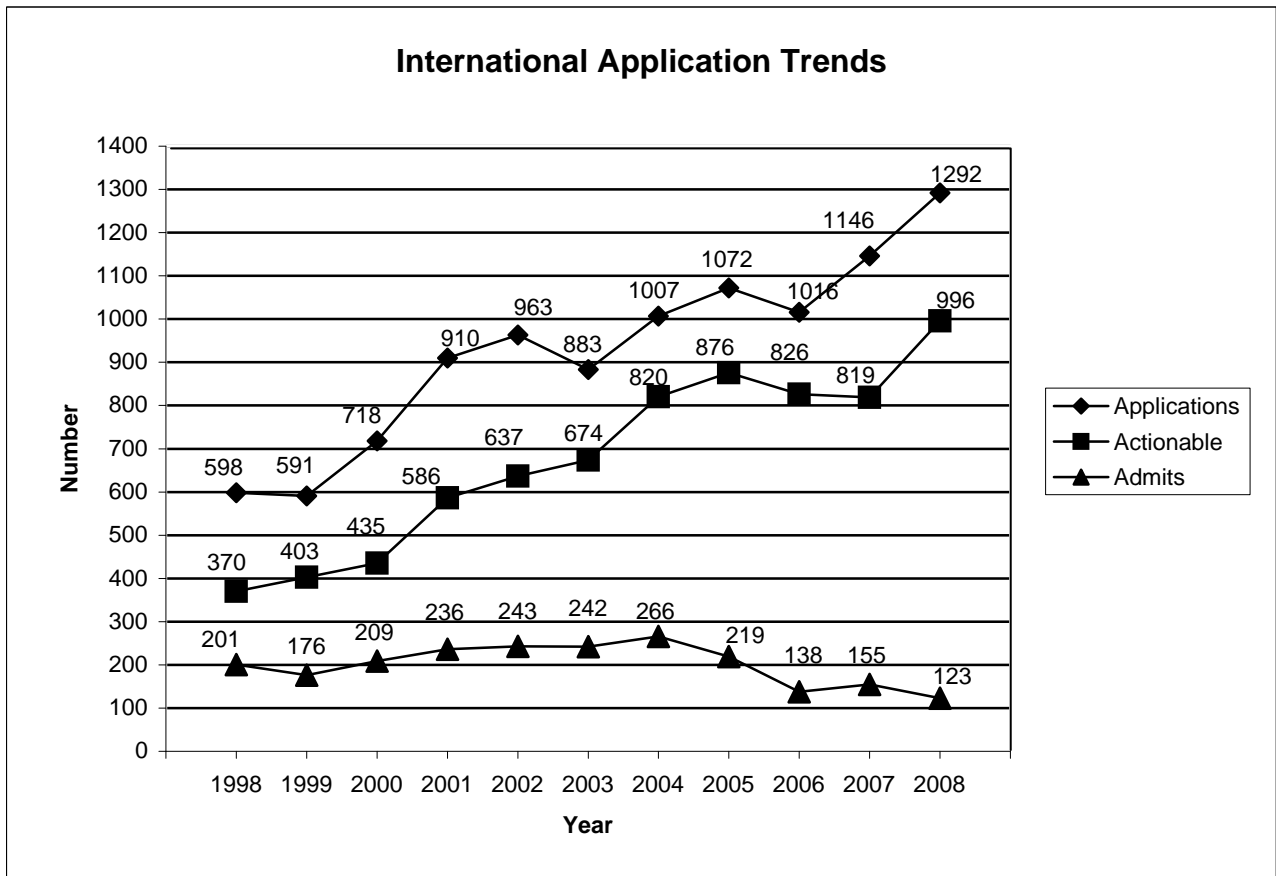
	APPLIED		ADMITTED		MATRICULATED	
	COM	NUM	COM	NUM	COM	NUM
FEMALE	27.4	134	28.6	84	27.6	30
MALE	27.0	102	28.2	63	27.7	17
COMBINED	27.3	236	28.4	147	27.7	47

ACT KEY: COM=Composite, NUM=Number

**CHART XIX
INTERNATIONAL REPORT**

Includes only students who are citizens of other countries
U.S. permanent residents and dual citizens are not included.

Year	Inquiries	Applications	Actionable	Admits	Matriculants
1998	2411	598	370	201	27
1999	2241	591	403	176	38
2000	2572	718	435	209	43
2001	3284	910	586	236	62
2002	3811	963	637	243	50
2003	4309	883	674	242	54
2004	4542	1007	820	266	60
2005	3402	1072	876	219	48
2006	2717	1016	826	138	38
2007	2897	1146	819	155	64
2008	2575	1292	996	123	53



Fifty-three (53) new international students enrolled, including 2 exchange students, from the following countries: Albania, Bangladesh, Brazil, Bulgaria, Cambodia, Costa Rica, Czech Republic, Ecuador, Egypt, Georgia, Ghana, Greece, Honduras, India, Iran, Iraq, Jamaica, Malaysia, Myanmar, Nepal, P.R. China, P.R.Congo, Philippines, Russia, Singapore, South Korea, Thailand, Uganda, and Zimbabwe.

CHART XX
FIRST-YEAR CLASS, 2008 - INTERNATIONAL
SECONDARY SCHOOL CLASS RANK

APPLIED QUINTILES (1220)										
	I		II		III		IV		V	
FEMALE	257		20		7		4		0	
MALE	260		19		6		2		1	
COMBINED	517	89.8%	39	6.8%	13	2.3%	6	1.0%	1	0.2%
NOT RANKED=644										

ADMITTED QUINTILES (120)										
	I		II		III		IV		V	
FEMALE	18		4		1		1		0	
MALE	15		1		1		0		0	
COMBINED	33	80.5%	5	12.2%	2	4.9%	1	2.4%	0	0.0%
NOT RANKED=79										

MATRICULATED QUINTILES (50)										
	I		II		III		IV		V	
FEMALE	9		3		0		0		0	
MALE	6		0		0		0		0	
COMBINED	15	83.3%	3	16.7%	0	0.0%	0	0.0%	0	0.0%
NOT RANKED=32										

**CHART XXI
FIRST-YEAR CLASS, 2008 - INTERNATIONAL
AVERAGE TEST RESULTS**

TEST OF ENGLISH AS A FOREIGN LANGUAGE (TOEFL)

	APPLIED		ADMITTED		MATRICULATED	
	TOEFL	Number	TOEFL	Number	TOEFL	Number
FEMALE	258	380	264	34	260	14
MALE	257	346	260	34	258	14
COMBINED	257	726	262	68	259	28
NOT INCLUDED		494		52		22

All TOEFL scores have been converted to the
computer-based scale.

**CHART XXII
FIRST-YEAR CLASS, 2008 - INTERNATIONAL
AVERAGE STANDARDIZED TEST RESULTS**

SAT

	APPLIED			ADMITTED			MATRICULATED		
	Critical Reading	Math	Number	Critical Reading	Math	Number	Critical Reading	Math	Number
FEMALE	594	705	484	617	692	60	585	665	26
MALE	592	715	502	619	724	51	631	716	21
COMBINED	593	710	986	618	707	111	606	688	47

ACT

	APPLIED		ADMITTED		MATRICULATED	
	COM	NUM	COM	NUM	COM	NUM
FEMALE	26.4	16	26.0	1	26.0	1
MALE	29.7	18	28.3	3	23.0	1
COMBINED	28.1	34	27.8	4	24.5	2

ACT KEY: COM=Composite, NUM=Number

**CHART XXIII
FIRST-YEAR CLASS, 2008
PUBLIC AND NON-PUBLIC SCHOOLS**

		APPLIED	ADMITTED	% ADMITTED	MATRICULATED	%MATRICULATED
FEMALE	PUBLIC	1072	516	48.1%	161	31.2%
	NON-PUBLIC	920	237	25.8%	83	35.0%
	UNKNOWN	38	17	44.7%	7	41.2%
	Total	2030	770		251	

		APPLIED	ADMITTED	% ADMITTED	MATRICULATED	%MATRICULATED
MALE	PUBLIC	909	393	43.2%	142	36.1%
	NON-PUBLIC	911	209	22.9%	67	32.1%
	UNKNOWN	38	11	28.9%	4	36.4%
	Total	1858	613		213	

		APPLIED	ADMITTED	% ADMITTED	MATRICULATED	%MATRICULATED
COMBINED	PUBLIC	1981	909	45.9%	303	33.3%
	NON-PUBLIC	1831	446	24.4%	150	33.6%
	UNKNOWN	76	28	36.8%	11	39.3%
	Total	3888	1383		464	

ILLUSTRATION F
ENROLLMENT BY HIGH SCHOOL TYPE
FIRST-YEAR CLASS, 2008

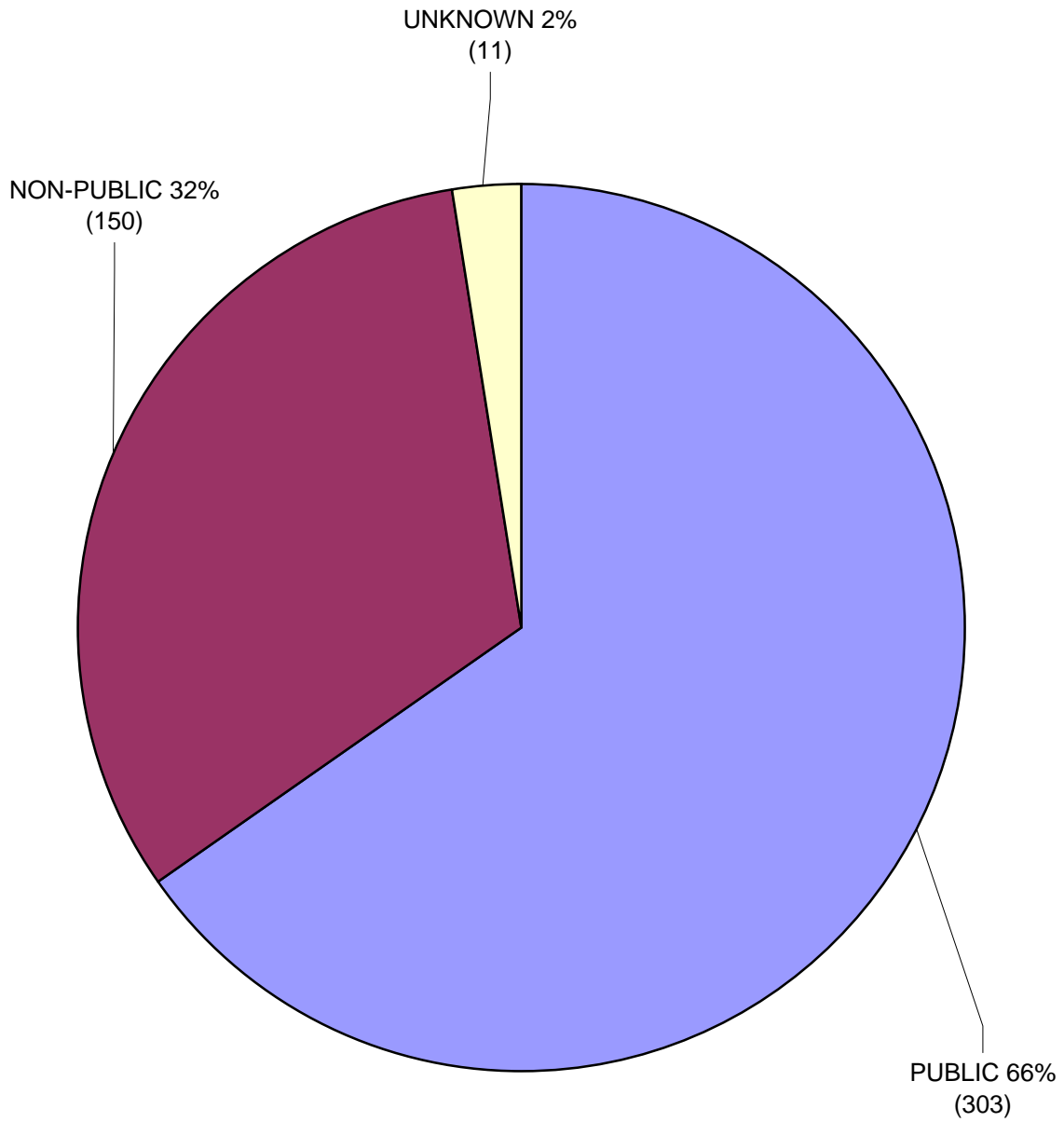


CHART XXIV
WAITING LIST STATISTICS - FALL SEMESTERS, 1998-2008

	NO. PLACED ON WAITING LIST	ADMITTED	% ADMITTED	MATRICULATED	% MATRICULATED
1998	249	14	5.6%	4	28.6%
1999	144	45	31.3%	11	24.4%
2000	222	64	28.8%	31	48.4%
2001	152	68	44.7%	29	42.6%
2002	146	28	19.2%	11	39.3%
2003	244	1	0.4%	1	100.0%
2004	512	29	5.7%	22	75.9%
2005	603	31	5.1%	21	67.7%
2006	811	27	3.3%	23	85.2%
2007	743	16	2.2%	13	81.3%
2008	951	5	0.5%	3	60.0%

CHART XXV
FIRST-CHOICE MAJOR, 2004-2008
Top seven disciplines among all entering students

2004 (class of 454)		2005 (class of 408)		2006 (class of 426)		2007 (class of 448)		2008 (class of 464)	
Biology	54	Biology	41	Biology	40	Biology	44	Biology	45
English	44	English	40	English	33	English	35	English	36
Math	27	Political Science	20	Political Science	31	Psychology	24	Political Science	32
Political Science	24	Math/History	19	History	22	Chemistry	18	Physics	28
Psychology	22	Medicine	17	Psychology	22	Medicine	17	Economics	28
History	19	Psychology	16	Economics	18	Economics	16	Medicine	26
Physics	15	Physics	15	Physics	17	Math	16	Psychology/Int'l Relations	25

**CHART XXVI
EXTRACURRICULAR PROFILE
FIRST-YEAR CLASS, 2008**

