

GRINNELL COLLEGE



2007
REPORT ON ADMISSION
AT GRINNELL COLLEGE

PREPARED BY

The Grinnell College Office of Admission

TABLE OF CONTENTS

Introduction	1-2
CHART I	Fall Semester Admission Statistics (Applied, Admitted, Matriculated), 1987-2007.....	3
CHART II	Early Decision Statistics, 1987-2007.....	4
CHART III	Regular Decision Statistics, 1987-2007	5
CHART IV	First-Year, Regular Decision Statistics, 1987-2007	6
CHART V	Transfer Statistics, 1997-2007	7
CHART VI	Spring Semester Admission Statistics, 1987-2007	8
CHART VII	Male/Female Matriculants, 1987-2007.....	9
CHART VIII	Admission Statistics (Gender) for Fall Semester, 2007	10
CHART IX	Secondary School Class Rank by Quintile, 1987-2007	11
CHART X	Secondary School Class Rank, First-Year Class.....	12
ILLUSTRATION A	Quality of First-Year Class by High School Rank.....	13
CHART XI	Average SAT and ACT Results, First-Year Class.....	14
CHART XII	SAT Score Distribution, First-Year Class	15-16
CHART XIII	ACT Score Distribution, First-Year Class.....	17
ILLUSTRATION B	Yield and Composition of First-Year Class by Admission Rating	18
CHART XIV	Average SAT Results, All Matriculants, 1987-2007	19
CHART XV	Geographic Distribution by Home State (Applicants, Admits and Matriculants, 2002-2007)	20-21
ILLUSTRATION D	Students Enrolled by Geographic Region (Home State)	22
CHART XVI	U.S. Students of Color, Enrollment History, 1997-2007.....	23
ILLUSTRATION E	Ethnic Composition of Entering Class.....	24
CHART XVII	Secondary School Class Rank, First-Year Class, Multicultural	25
CHART XVIII	Average SAT and ACT Results, First-Year Class, Multicultural	26
CHART XIX	International Report, Fall 2007	27
CHART XX	Secondary School Class Rank, First-Year Class, International.....	28

CHART XXI	Average TOEFL Results, First-Year Class, International	29
CHART XXII	Average SAT and ACT Results, First-Year Class, International.....	30
CHART XXIII	High School Type, by Gender, First-Year Class	31
ILLUSTRATION F	Enrollment by High School Type, First-Year Class	32
CHART XXIV	Waiting List Action, 1997-2007	33
CHART XXV	First-Choice Major, Entering Class, 2003-2007	34
CHART XXVI	Extracurricular Profile, First-Year Class	35

INTRODUCTION

Following a long standing tradition at Grinnell College, I'm pleased to share the results of last year's efforts to recruit the new class entering in the fall of 2007. As in the past, this comprehensive admission report provides substantial information about admission at the College, both for the class entering in the fall of 2007 and in prior years. Additional information on Admission and Financial Aid results can be found in the annual summaries for the Faculty-Student Committee on Admission and Financial Aid and in the Fact Book published by the Office of Institutional Research.

I urge you to read the report in its entirety. Interesting class highlights I'll briefly mention below.

- The largest number of total applicants in the College's history (3973).
- The largest Early Decision applicant pool in 15 years (167).
- A male/female ratio of 46%/54%, slightly higher than the national average of 45%/55% at liberal arts schools, and right at Grinnell's five year average.
- The largest ever number of new students of color at 88, and the second largest percentage.
- The fourth largest entering class in the last twenty years (1993, 1997, and 2004 were larger).

At the same time, the competition for excellent students among highly selective institutions has created significant pressure on the admission effort, such that:

- Applications for admission have leveled off in the last three years - 3973 in 2007 versus 3923 in 2005 - after a meteoric rise of 50% between 1999 and 2005.
- The acceptance rate is 3% higher in 2007 than it was in 2005, though well below the two-thirds acceptance rate in the mid-1990s.
- Mean SAT scores for the entering class are 1340, 1 point higher than last year but down slightly from the College's high in the 1360s in 2004 and 2005.

Going forward, Grinnell must continue to engage prospective students with its distinctive leadership story, branch out to new ways of locating and recruiting exceptional student talent to the campus, and provide an exceptional experience to visitors to campus. A change in demographics (a decrease in the number of high school graduates over the next six years) will make the recruitment environment more challenging as well.

Several members of the admission team who shaped these admission results are no longer at Grinnell, including Tami Hrasky and Eric Staab, both long-standing members of the office. Jim Sumner, my predecessor, is still with the College but has shifted his focus from overseeing the admission and financial aid offices to recruiting students from the west coast for Grinnell. The new recruiting team in the Office of Admission is now made up of Sarah White, Marlene Jacks, Misty Huacuja '99, and Sara Adams, all Grinnell veterans, as well as newcomers Jon Edwards, Bryan Coy '02, Maureen Fitzgibbon, Quinton Clay, and Eli Best '07. I was also fortunate to welcome back Nancy Maly '61, a former Grinnell admission officer, whom I asked to serve in an interim director of admission role for this academic year.

On behalf of the current and past staff and myself, I want to thank all those individuals who either formally or informally helped in the admission process this last year. A friendly word, an impromptu tour of a building, making time to discuss Grinnell with a family – these and the countless other ways our community helps prospective students understand Grinnell's distinctive education make an enormous difference in attracting such vibrant and gifted students to Grinnell. Thank you for your assistance.

Finally, a special thanks to Connie Newport, a critical member of the admission team, who once again rose to the challenge of compiling the information contained in this report.

Seth Allen
Dean of Admission and Financial Aid
January 2008

CHART I
FALL SEMESTER ADMISSION STATISTICS
(APPLIED, ADMITTED, MATRICULATED)
1987-2007

	Applied	Admitted	% Admitted	Matriculated	% Matriculated
1987	1813	1101	60.7%	359	32.6%
1988	1955	1121	57.3%	386	34.4%
1989	1881	1238	65.8%	399	32.2%
1990	1755	1184	67.5%	386	32.6%
1991	1717	1056	61.5%	373	35.3%
1992	2015	1225	60.8%	348	28.4%
1993	2212	1510	68.3%	489	32.4%
1994	2299	1250	54.4%	369	29.5%
1995	2170	1463	67.4%	367	25.1%
1996	2120	1397	65.9%	393	28.1%
1997	2918	1472	50.4%	465	31.6%
1998	2832	1231	43.5%	380	30.9%
1999	2476	1239	50.0%	356	28.7%
2000	2886	1303	45.1%	391	30.0%
2001	2960	1362	46.0%	401	29.4%
2002	3042	1405	46.2%	398	28.3%
2003	3058	1482	48.5%	418	28.2%
2004	3733	1543	41.3%	454	29.4%
2005	3923	1435	36.6%	408	28.4%
2006	3891	1443	37.1%	426	29.5%
2007	3973	1569	39.5%	448	28.6%

Applied and Admitted totals include thirteen (13) deferrals to Fall 2008
and three (3) special exchange students.

**CHART II
EARLY DECISION, FALL SEMESTERS, 1987-2007**

	APPLIED	ADMITTED	% ADMITTED	MATRICULATED	% MATRICULATED
1987	182	117	64.3%	77	65.8%
1988	163	113	69.3%	84	74.3%
1989	138	91	65.9%	65	71.4%
1990	172	132	76.7%	104	78.8%
1991	151	121	80.1%	92	76.0%
1992	138	108	78.3%	82	75.9%
1993	147	108	73.5%	78	72.2%
1994	142	103	72.5%	77	74.8%
1995	105	76	72.4%	66	86.8%
1996	71	53	74.6%	45	84.9%
1997	89	59	66.3%	51	86.4%
1998	91	64	70.3%	60	93.8%
1999	88	41	46.6%	35	85.4%
2000	78	49	62.8%	45	91.8%
2001	66	43	65.2%	39	90.7%
2002	72	57	79.2%	53	93.0%
2003	119	94	79.0%	88	93.6%
2004	134	97	72.4%	90	92.8%
2005	148	101	68.2%	95	94.1%
2006	161	129	80.1%	116	89.9%
2007	167	127	76.0%	115	90.6%

Applied and Admitted totals include one (1) deferral to Fall 2008.

**CHART III
REGULAR DECISION, FALL SEMESTERS, 1987-2007
ALL NEW STUDENTS - FIRST-YEAR AND TRANSFER**

	APPLIED	ADMITTED	% ADMITTED	MATRICULATED	% MATRICULATED
1987	1631	984	60.3%	282	28.7%
1988	1792	1008	56.3%	302	30.0%
1989	1743	1147	65.8%	334	29.1%
1990	1583	1052	66.5%	282	26.8%
1991	1566	935	59.7%	281	30.1%
1992	1877	1117	59.5%	266	23.8%
1993	2065	1402	67.9%	408	29.1%
1994	2157	1147	53.2%	292	25.5%
1995	2065	1387	67.2%	301	21.7%
1996	2049	1344	65.6%	348	25.9%
1997	2829	1413	49.9%	414	29.3%
1998	2754	1167	42.4%	320	27.4%
1999	2412	1198	49.7%	321	26.8%
2000	2808	1254	44.7%	346	27.6%
2001	2894	1319	45.6%	362	27.4%
2002	2970	1348	45.4%	345	25.6%
2003	2939	1388	47.2%	330	23.8%
2004	3599	1446	40.2%	364	25.2%
2005	3775	1334	35.3%	313	23.5%
2006	3730	1314	35.2%	310	23.6%
2007	3806	1442	37.9%	333	23.1%

Applied and Admitted totals include twelve (12) deferrals to Fall 2008.

**CHART IV
FIRST-YEAR STATISTICS - REGULAR DECISION
FALL SEMESTERS, 1997-2007**

	APPLIED	ADMITTED	% ADMITTED	MATRICULATED	% MATRICULATED
1997	2619	1337	51.1%	380	28.4%
1998	2552	1108	43.4%	292	26.4%
1999	2217	1134	51.2%	290	25.6%
2000	2589	1200	46.3%	346	28.8%
2001	2635	1238	47.0%	321	25.9%
2002	2706	1279	47.3%	316	24.7%
2003	2730	1349	49.4%	317	23.5%
2004	3418	1404	41.1%	345	24.6%
2005	3582	1297	36.2%	294	22.7%
2006	3542	1272	35.9%	290	22.8%
2007	3610	1407	39.0%	312	22.2%

Applied and Admitted totals include twelve (12) deferrals to Fall 2008.

CHART V
TRANSFER STATISTICS, FALL SEMESTERS, 1997-2007

	APPLIED	ADMITTED	% ADMITTED	MATRICULATED	% MATRICULATED
1997	212	78	36.8%	36	46.2%
1998	193	51	26.4%	23	45.1%
1999	195	64	32.8%	31	48.4%
2000	219	54	24.7%	26	48.1%
2001	259	81	31.3%	41	50.6%
2002	264	69	26.1%	29	42.0%
2003	209	39	18.7%	13	33.3%
2004	181	42	23.2%	19	45.2%
2005	193	37	19.2%	19	51.4%
2006	188	42	22.3%	20	47.6%
2007	196	35	17.9%	21	60.0%

**CHART VI
SPRING ADMISSION STATISTICS, 1987-2007**

	APPLIED	ADMITTED	% ADMITTED	MATRICULATED	% MATRICULATED
1987	23	16	69.6%	12	75.0%
1988	19	14	73.7%	10	71.4%
1989	18	2	11.1%	2	100.0%
1990	12	2	16.7%	2	100.0%
1991	34	26	76.5%	17	65.4%
1992	19	8	42.1%	7	87.5%
1993	53	41	77.4%	18	43.9%
1994	13	2	15.4%	2	100.0%
1995	16	5	31.3%	4	80.0%
1996	16	10	62.5%	7	70.0%
1997	26	7	26.9%	6	85.7%
1998	35	10	28.6%	6	60.0%
1999	11	7	63.6%	3	42.9%
2000	21	6	28.6%	5	83.3%
2001	28	8	28.6%	5	62.5%
2002	31	15	48.4%	8	53.3%
2003	17	9	52.9%	7	77.8%
2004	38	20	52.6%	10	50.0%
2005	34	25	73.5%	10	40.0%
2006	28	17	60.7%	9	52.9%
2007	19	12	63.2%	7	58.3%

**CHART VII
TABLE OF MALE/FEMALE MATRICULANTS
FALL SEMESTERS, 1987-2007**

	MEN	% OF ENTERING CLASS	WOMEN	% OF ENTERING CLASS	TOTAL MATRICULATED
1987	196	54.6%	163	45.4%	359
1988	206	53.4%	180	46.6%	386
1989	190	47.6%	209	52.4%	399
1990	197	51.0%	189	49.0%	386
1991	159	42.6%	214	57.4%	373
1992	149	42.8%	199	57.2%	348
1993	235	48.1%	254	51.9%	489
1994	161	43.9%	206	56.1%	367
1995	170	46.3%	197	53.7%	367
1996	161	41.0%	232	59.0%	393
1997	200	43.0%	265	57.0%	465
1998	168	44.2%	212	55.8%	380
1999	172	48.3%	184	51.7%	356
2000	164	41.9%	227	58.1%	391
2001	189	47.1%	212	52.9%	401
2002	178	44.7%	220	55.3%	398
2003	195	46.7%	223	53.3%	418
2004	205	45.2%	249	54.8%	454
2005	193	47.3%	215	52.7%	408
2006	208	48.8%	218	51.2%	426
2007	206	46.0%	242	54.0%	448

Total matriculated includes three (3) special exchange students.

**CHART VIII
ADMISSION STATISTICS BY GENDER
FALL SEMESTER, 2007**

	Applied	Actionable	Admitted	% Admitted	Matriculated	% Matriculated	Deny	Withdrew	Incomplete	Admit/ Withdrew	Paid/ Withdrew
First-Year (Male)	1832	1440	675	46.9%	194	28.7%	740	114	303	458	14
First-Year (Female)	1945	1637	859	52.5%	233	27.1%	735	103	248	603	19
Transfer (Male)	101	58	16	27.6%	10	62.5%	42	9	34	6	0
Transfer (Female)	92	42	16	38.1%	8	50.0%	26	8	42	7	1
Special Exch. (Male)	2	2	2	100.0%	2	100.0%	0	0	0	0	0
Special Exch. (Female)	1	1	1	100.0%	1	100.0%	0	0	0	0	0
TOTALS	3973	3180	1569	49.3%	448	28.6%	1543	234	627	1074	34

Applied and Admitted totals include thirteen (13) deferrals to Fall 2008.

**CHART IX
SECONDARY SCHOOL CLASS RANK BY QUINTILE - ALL MATRICULANTS
FALL SEMESTERS, 1987-2007**

	I	%	II	%	III	%	IV	%	V	%	UNKNOWN	TOTAL
1987	271	86.9%	30	9.6%	9	2.9%	1	0.3%	1	0.3%	47	359
1988	289	83.0%	45	12.9%	10	2.9%	3	0.9%	1	0.3%	38	386
1989	281	82.4%	42	12.3%	15	4.4%	3	0.9%	0	0.0%	58	399
1990	256	78.0%	55	16.8%	13	3.9%	3	0.9%	1	0.3%	58	386
1991	248	79.0%	44	14.0%	16	5.1%	4	1.3%	2	0.6%	59	373
1992	242	85.5%	28	9.9%	9	3.2%	3	1.1%	1	0.4%	65	348
1993	340	84.8%	41	10.2%	13	3.2%	5	1.2%	2	0.5%	82	483
1994	267	86.1%	35	11.3%	6	2.0%	1	0.3%	1	0.3%	59	369
1995	237	80.6%	49	16.7%	5	1.7%	2	0.7%	1	0.3%	73	367
1996	259	82.5%	43	13.7%	12	3.8%	0	0.0%	0	0.0%	79	393
1997	311	86.4%	46	12.8%	2	0.5%	1	0.3%	0	0.0%	105	465
1998	275	86.2%	38	11.9%	4	1.3%	1	0.3%	1	0.3%	61	380
1999	231	79.9%	54	18.7%	4	1.4%	0	0.0%	0	0.0%	69	358
2000	252	85.7%	38	12.9%	3	1.0%	1	0.3%	0	0.0%	97	391
2001	240	83.3%	43	14.9%	3	1.0%	2	0.7%	0	0.0%	113	401
2002	215	81.7%	41	15.6%	4	1.5%	1	0.4%	2	0.8%	135	398
2003	247	81.3%	50	16.4%	7	2.3%	0	0.0%	0	0.0%	114	418
2004	283	88.2%	36	11.2%	2	0.6%	0	0.0%	0	0.0%	133	454
2005	257	89.2%	22	7.7%	6	2.1%	3	1.0%	0	0.0%	120	408
2006	238	85.0%	36	12.9%	6	2.1%	0	0.0%	0	0.0%	146	426
2007	257	88.3%	31	10.7%	1	0.3%	2	0.7%	0	0.0%	157	448

Percentages based on a total of 291 matriculants whose class rank was reported.

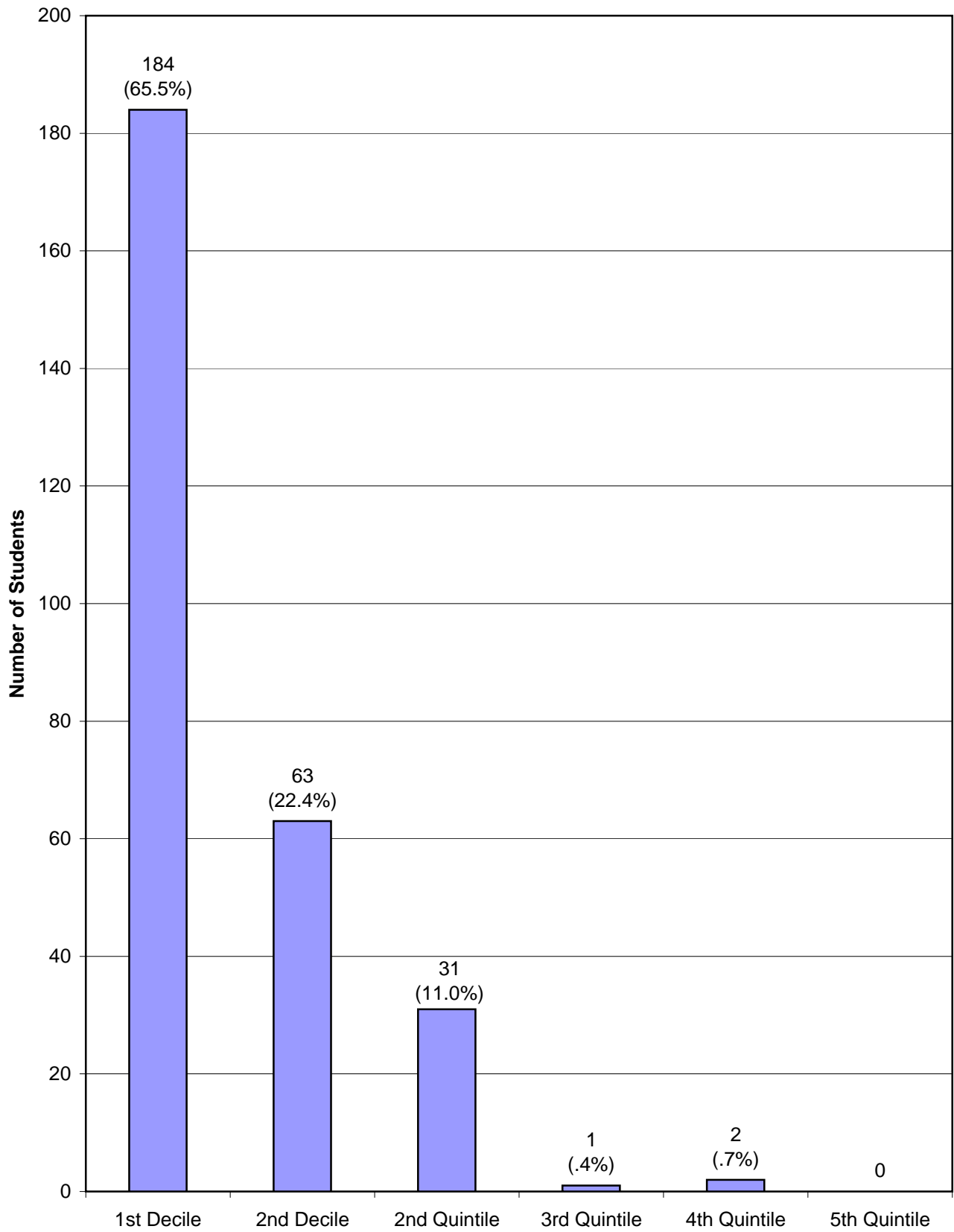
CHART X
FIRST-YEAR CLASS, FALL 2007
SECONDARY SCHOOL CLASS RANK - FIRST AND SECOND DECILES, SECOND THROUGH FIFTH QUINTILES

APPLIED (3777)												
	1ST DECILE		2ND DECILE		2ND QUINTILE		3RD QUINTILE		4TH QUINTILE		5TH QUINTILE	
	No.	%	No.	%	No.	%	No.	%	No.	%	No.	%
FEMALE	692	64.7%	184	17.2%	154	14.4%	32	3.0%	7	0.7%	1	0.1%
MALE	542	56.5%	209	21.8%	150	15.6%	38	4.0%	14	1.5%	6	0.6%
COMBINED	1234	60.8%	393	19.4%	304	15.0%	70	3.5%	21	1.0%	7	0.3%
NOT RANKED=1748												

ADMITTED (1534)												
	1ST DECILE		2ND DECILE		2ND QUINTILE		3RD QUINTILE		4TH QUINTILE		5TH QUINTILE	
	No.	%	No.	%	No.	%	No.	%	No.	%	No.	%
FEMALE	417	79.9%	68	13.0%	35	6.7%	1	0.2%	1	0.2%	0	0.0%
MALE	287	68.3%	98	23.3%	31	7.4%	1	0.3%	3	0.7%	0	0.0%
COMBINED	704	74.7%	166	17.6%	66	7.0%	2	0.2%	4	0.4%	1	0.1%
NOT RANKED=592												

MATRICULATED (427)												
	1ST DECILE		2ND DECILE		2ND QUINTILE		3RD QUINTILE		4TH QUINTILE		5TH QUINTILE	
	No.	%	No.	%	No.	%	No.	%	No.	%	No.	%
FEMALE	107	69.9%	27	17.6%	17	11.1%	1	0.7%	1	0.7%	0	0.0%
MALE	77	60.2%	36	28.1%	14	10.9%	0	0.0%	1	0.8%	0	0.0%
COMBINED	184	65.5%	63	22.4%	31	11.0%	1	0.4%	2	0.7%	0	0.0%
NOT RANKED=146												

ILLUSTRATION A
QUALITY OF FIRST-YEAR CLASS
BY HIGH SCHOOL RANK IN CLASS



**CHART XI
FIRST-YEAR CLASS, FALL 2007
AVERAGE STANDARDIZED TEST RESULTS**

SCHOLASTIC ASSESSMENT TEST - SAT

	APPLIED			ADMITTED			MATRICULATED		
	Critical Reading	Math	Number	Critical Reading	Math	Number	Critical Reading	Math	Number
FEMALE	661	659	1075	705	680	473	668	648	119
MALE	641	682	1078	693	707	373	671	696	102
COMBINED	651	671	2153	700	692	846	669	670	221

AMERICAN COLLEGE TEST - ACT

	APPLIED		ADMITTED		MATRICULATED	
	COM	NUM	COM	NUM	COM	NUM
FEMALE	29.3	663	30.6	381	30.0	111
MALE	29.5	507	30.9	300	30.6	91
COMBINED	29.4	1170	30.8	681	30.2	202

ACT KEY: COM=Composite, NUM=Number

**CHART XII
FIRST-YEAR CLASS, FALL 2007
SAT SCORE DISTRIBUTION - CRITICAL READING**

RANGE	GENDER	APPLIED	ADMITTED	DENIED	MATRICULATED	PERCENT OF CLASS *
	MALE	174	117	38	29	
750-800	FEMALE	251	176	51	31	
	COMBINED	425	293	89	60	27.1%
	MALE	190	96	75	20	
700-740	FEMALE	195	116	59	21	
	COMBINED	385	212	134	41	18.6%
	MALE	203	67	117	18	
650-690	FEMALE	198	81	99	26	
	COMBINED	401	148	216	44	19.9%
	MALE	194	46	129	14	
600-640	FEMALE	177	57	107	19	
	COMBINED	371	103	236	33	14.9%
	MALE	121	24	81	9	
550-590	FEMALE	106	17	74	7	
	COMBINED	227	41	155	16	7.2%
	MALE	82	11	53	5	
500-540	FEMALE	78	15	53	8	
	COMBINED	160	26	106	13	5.9%
	MALE	65	8	39	3	
450-490	FEMALE	41	7	27	3	
	COMBINED	106	15	66	6	2.7%
	MALE	34	2	21	2	
400-440	FEMALE	21	3	8	3	
	COMBINED	55	5	29	5	2.3%
	MALE	15	2	4	2	
Below 400	FEMALE	8	1	3	1	
	COMBINED	23	3	7	3	1.4%

* Based on number of scores submitted (221)

**CHART XII
FIRST-YEAR CLASS, FALL 2007
SAT SCORE DISTRIBUTION - MATH**

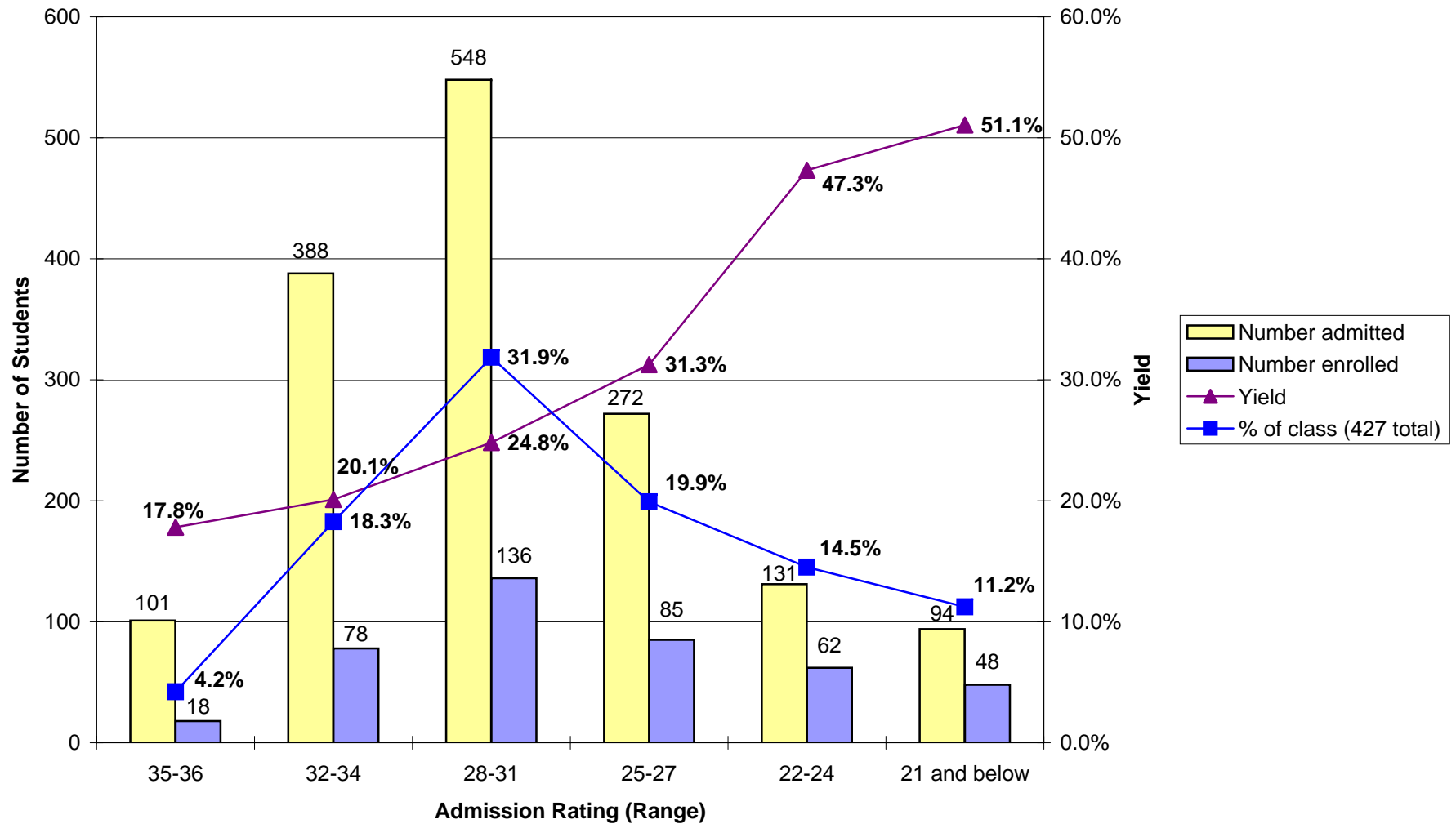
RANGE	GENDER	APPLIED	ADMITTED	DENIED	MATRICULATED	PERCENT OF CLASS *
	MALE	293	127	136	38	
750-800	FEMALE	197	85	94	11	
	COMBINED	490	212	230	49	22.2%
	MALE	219	89	98	15	
700-740	FEMALE	198	112	64	17	
	COMBINED	417	201	162	32	14.5%
	MALE	263	97	142	21	
650-690	FEMALE	256	150	86	48	
	COMBINED	519	247	228	69	31.2%
	MALE	136	37	78	15	
600-640	FEMALE	192	79	85	18	
	COMBINED	328	116	163	33	14.9%
	MALE	79	13	49	7	
550-590	FEMALE	109	28	70	12	
	COMBINED	188	41	119	19	8.6%
	MALE	51	8	31	5	
500-540	FEMALE	70	11	53	5	
	COMBINED	121	19	84	10	4.5%
	MALE	23	2	14	1	
450-490	FEMALE	28	6	15	6	
	COMBINED	51	8	29	7	3.2%
	MALE	8	0	7	0	
400-440	FEMALE	15	2	10	2	
	COMBINED	23	2	17	2	0.9%
	MALE	6	0	2	0	
Below 400	FEMALE	10	0	4	0	
	COMBINED	16	0	6	0	0.0%

**CHART XIII
FIRST-YEAR CLASS, 2007
ACT SCORE DISTRIBUTION**

COMPOSITE	GENDER	APPLIED	ADMITTED	DENIED	MATRICULATED	PERCENT OF CLASS *
	MALE	79	65	10	21	
34-36	FEMALE	55	50	3	8	
	COMBINED	134	115	13	29	14.4%
	MALE	96	77	16	19	
32-33	FEMALE	153	122	20	32	
	COMBINED	249	199	36	51	25.2%
	MALE	120	77	34	24	
30-31	FEMALE	159	101	50	30	
	COMBINED	279	178	84	54	26.7%
	MALE	70	42	21	12	
28-29	FEMALE	124	60	51	22	
	COMBINED	194	102	72	34	16.8%
	MALE	105	32	63	11	
24-27	FEMALE	121	37	71	13	
	COMBINED	226	69	134	24	11.9%
	MALE	30	7	15	4	
20-23	FEMALE	42	11	28	6	
	COMBINED	72	18	43	10	5.0%
	MALE	6	0	0	0	
17-19	FEMALE	5	0	3	0	
	COMBINED	11	0	3	0	0.0%
	MALE	1	0	1	0	
BELOW 16	FEMALE	4	0	3	0	
	COMBINED	5	0	4	0	0.0%

* Based on number of scores submitted (202)

**ILLUSTRATION B
YIELD AND COMPOSITION OF FALL 2007 FIRST-YEAR CLASS
BY ADMISSION RATING**



**CHART XIV
AVERAGE SAT RESULTS
ALL MATRICULANTS - FALL SEMESTERS, 1987-2007**

	SAT CRITICAL READING	SAT MATH
1987	607	634
1988	611	646
1989	604	636
1990	602	634
1991	608	633
1992	596	634
1993	602	642
1994	606	653
1995	595	637
1996	673	646
1997	674	659
1998	674	664
1999	668	658
2000	673	660
2001	668	665
2002	675	660
2003	666	671
2004	684	683
2005	685	678
2006	673	665
2007	669	671

BEGINNING IN 1996, SAT I SCORES ARE
REPORTED ON THE RECENTERED SCALE

CHART XV
DISTRIBUTION BY HOME STATE
APPLICANTS (A), ADMITS (AD) AND MATRICULANTS (M)

	2002			2003			2004			2005			2006			2007		
	A	AD	M	A	AD	M	A	AD	M	A	AD	M	A	AD	M	A	AD	M
ALABAMA	14	5	0	7	3	1	9	5	1	12	5	0	14	8	4	6	3	0
ALASKA	6	4	0	5	2	1	10	5	0	6	4	1	8	2	0	5	2	0
ARIZONA	28	12	6	31	19	2	30	11	4	44	16	0	33	14	2	47	18	1
ARKANSAS	20	12	3	23	8	3	29	12	1	11	5	0	13	6	2	14	6	1
CALIFORNIA	169	80	20	192	112	39	310	116	27	302	101	26	260	102	19	255	112	28
COLORADO	63	39	10	63	36	9	71	35	13	84	44	13	99	47	14	81	41	13
CONNECTICUT	18	13	4	26	11	5	29	13	5	34	13	5	39	18	6	45	20	5
DELAWARE	3	3	1	0	0	0	3	1	0	2	1	1	6	3	0	2	1	1
WASH. , DC	14	7	2	15	5	1	12	8	2	23	9	8	22	11	7	15	8	7
FLORIDA	30	16	7	31	18	6	30	11	1	42	12	3	77	21	5	60	21	3
GEORGIA	21	9	3	18	9	1	22	11	1	22	11	2	20	10	3	28	10	2
GUAM	1	1	0	0	0	0	0	0	0	0	0	0	1	1	0	1	0	0
HAWAII	22	15	5	9	6	4	26	13	1	26	18	6	14	7	3	25	17	4
IDAHO	3	2	0	7	4	2	4	1	0	9	3	0	5	2	0	4	2	1
ILLINOIS	272	155	55	345	186	50	409	177	57	421	178	47	400	185	65	380	197	60
INDIANA	34	23	8	46	30	4	46	30	10	38	21	7	46	33	9	38	19	5
IOWA	208	111	41	227	116	57	225	102	48	211	85	35	202	109	52	188	111	44
KANSAS	53	32	16	43	23	12	63	34	14	61	30	10	73	35	12	50	29	7
KENTUCKY	12	9	1	11	6	1	15	11	3	16	13	6	12	6	2	16	14	5
LOUISIANA	10	2	1	10	5	1	6	1	1	10	2	1	8	1	0	9	5	2
MAINE	6	3	0	9	6	3	13	8	3	19	10	2	13	5	1	14	4	1
MARYLAND	41	27	8	42	22	6	42	17	4	59	21	6	61	30	9	70	29	8
MASSACHUSETTS	44	26	7	53	26	7	78	30	9	84	31	6	95	38	8	92	40	9
MICHIGAN	28	12	2	57	29	11	51	22	8	57	25	6	57	24	6	60	29	4
MINNESOTA	159	102	29	148	100	28	197	98	36	237	108	48	212	92	24	217	128	37
MISSISSIPPI	10	3	0	19	9	4	28	10	3	19	9	3	31	11	0	21	8	2

**CHART XV
DISTRIBUTION BY HOME STATE
APPLICANTS (A), ADMITS (AD) AND MATRICULANTS (M)**

CHART XI, PAGE 2	2002			2003			2004			2005			2006			2007		
	A	AD	M	A	AD	M	A	AD	M	A	AD	M	A	AD	M	A	AD	M
MISSOURI	87	58	12	75	47	12	89	49	10	105	59	14	126	60	18	90	50	11
MONTANA	2	1	0	5	1	0	6	2	1	6	2	1	8	5	0	7	5	1
NEBRASKA	26	13	5	24	15	5	30	20	8	49	26	9	43	24	9	39	18	4
NEVADA	3	1	0	4	4	2	8	1	1	6	3	1	5	1	0	4	2	0
NEW HAMPSHIRE	7	3	0	7	1	0	15	4	0	10	3	2	9	6	1	11	5	1
NEW JERSEY	37	20	6	29	21	7	49	23	6	32	9	3	54	21	8	39	15	2
NEW MEXICO	25	15	3	20	10	1	24	16	5	32	16	6	26	10	2	27	17	1
NEW YORK	99	54	20	95	60	9	114	37	12	145	53	18	129	48	8	153	75	19
NORTH CAROLINA	16	9	2	16	7	0	19	8	3	17	8	4	22	15	2	22	11	2
NORTH DAKOTA	6	5	1	3	2	1	1	0	0	1	0	0	2	0	0	5	4	1
OHIO	40	21	6	61	39	14	72	45	13	75	35	8	68	30	13	74	36	6
OKLAHOMA	11	5	1	9	5	3	12	7	2	13	10	4	20	11	4	15	7	1
OREGON	40	28	5	35	24	3	71	43	13	63	29	9	72	45	14	65	34	8
PENNSYLVANIA	29	14	5	38	19	4	44	17	6	53	15	2	47	20	4	28	15	4
PUERTO RICO	2	0	0	0	0	0	3	1	0	0	0	0	3	0	0	0	0	0
RHODE ISLAND	4	4	2	1	1	0	4	2	1	2	0	0	6	2	1	3	1	0
SOUTH CAROLINA	10	2	0	6	3	1	9	7	2	5	3	1	5	1	0	5	0	0
SOUTH DAKOTA	7	4	2	5	5	1	14	12	6	7	2	0	15	11	2	13	7	4
TENNESSEE	22	11	3	31	21	3	27	14	5	26	13	2	19	8	2	33	20	7
TEXAS	154	51	13	100	52	12	146	58	13	130	46	6	129	41	18	129	57	17
UTAH	15	9	3	11	7	2	12	8	3	14	9	1	13	8	1	13	6	2
VERMONT	8	5	4	3	1	0	6	3	0	12	6	3	11	4	1	14	9	3
VIRGIN ISLANDS	0	0	0	0	0	0	0	0	0	1	0	0	0	0	0	2	0	0
VIRGINIA	23	18	2	25	11	6	28	16	3	36	16	6	39	17	1	43	18	6
WASHINGTON	52	32	10	44	25	2	92	57	15	83	29	5	84	36	14	80	40	5
WEST VIRGINIA	1	1	1	6	5	2	4	3	0	3	1	0	6	5	1	6	3	1
WISCONSIN	80	49	20	87	56	24	99	48	14	101	43	12	114	45	9	89	50	12
WYOMING	3	1	1	7	4	2	6	5	3	4	1	0	7	4	1	9	4	1

ILLUSTRATION D
FIRST-YEAR STUDENTS ENROLLED BY GEOGRAPHIC REGION
(HOME STATE)

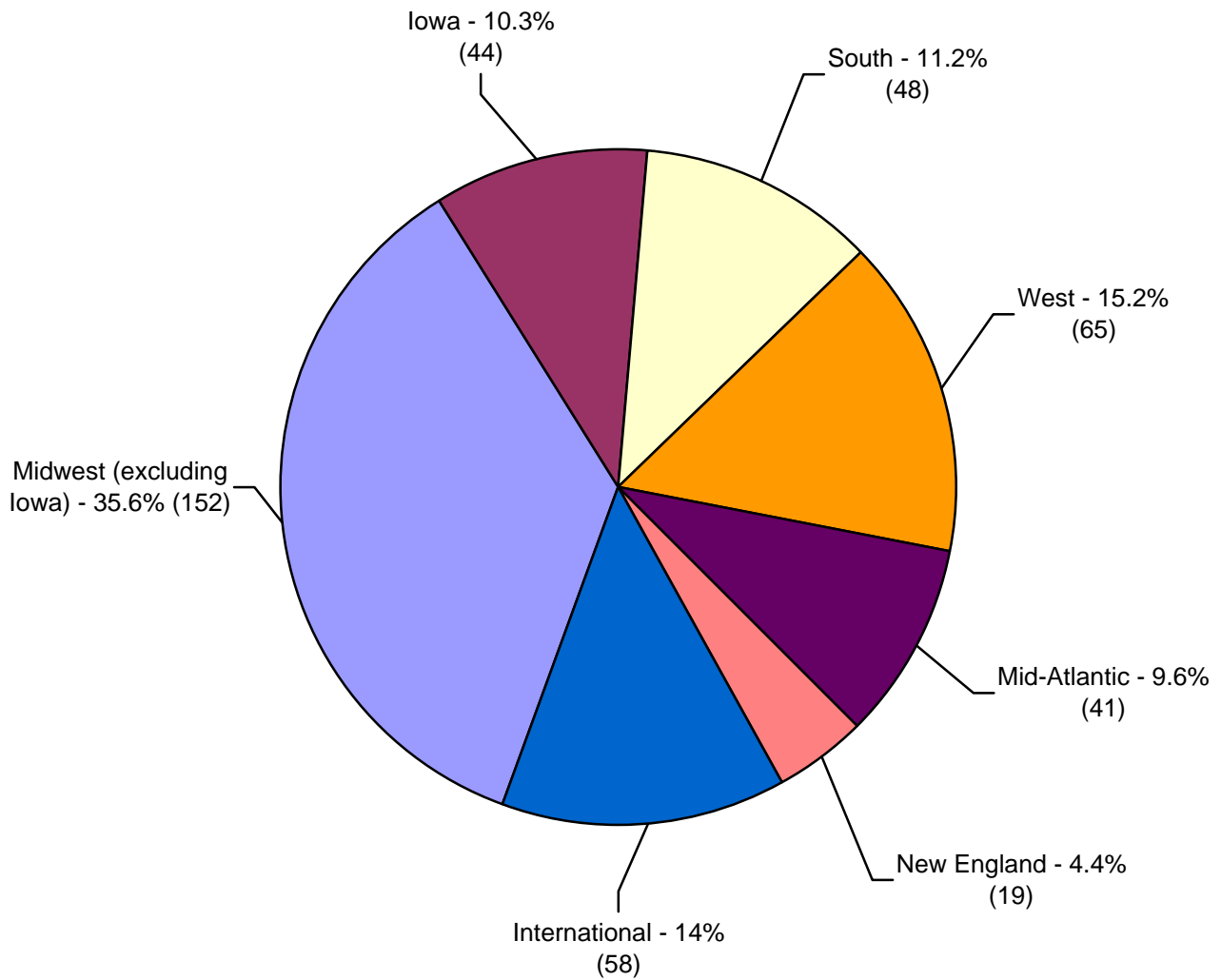


CHART XVI
U.S. STUDENTS OF COLOR (FIRST-YEAR AND TRANSFER)
ENROLLMENT HISTORY, 1997-2007

	<i>Class size</i>	<i>U.S. Multicultural</i>	<i>Percent of Class</i>	<i>African-American</i>	<i>Percent of Class</i>	<i>Latino/a</i>	<i>Percent of Class</i>	<i>Asian-American</i>	<i>Percent of Class</i>	<i>Native American</i>	<i>Percent of Class</i>	<i>**Unknown ethnicity</i>	<i>Percent of Class</i>
1997	451	50	11.1%	7	1.6%	22	4.9%	18	4.0%	3	0.7%	2	0.4%
1998	380	44	11.6%	11	2.9%	14	3.7%	19	5.0%	0	0.0%	32	8.4%
1999	356	54	15.2%	11	3.1%	22	6.2%	19	5.3%	2	0.6%	28	7.9%
2000	391	50	12.8%	18	4.6%	15	3.8%	15	3.8%	2	0.5%	43	11.0%
2001	401	53	13.2%	19	4.7%	13	3.2%	17	4.2%	4	1.0%	39	9.7%
2002	398	38	9.5%	7	1.8%	10	2.5%	19	4.8%	2	0.5%	39	9.8%
2003	418	71	17.0%	19	4.5%	21	5.0%	25	6.0%	6	1.4%	13	3.1%
2004	454	61	13.4%	18	4.0%	17	3.7%	25	5.5%	1	0.2%	27	5.9%
2005	408	83	20.3%	25	6.1%	27	6.6%	31	7.6%	0	0.0%	24	5.9%
2006	426	80	18.8%	22	5.2%	24	5.6%	32	7.5%	2	0.5%	26	6.1%
2007	448	88	19.6%	23	5.1%	27	6.0%	35	7.8%	3	0.7%	30	6.7%

**Beginning in 1998, there was a change in how this category was reported.

ILLUSTRATION E
ETHNIC COMPOSITION OF ENTERING CLASS (FIRST-YEAR AND TRANSFER)

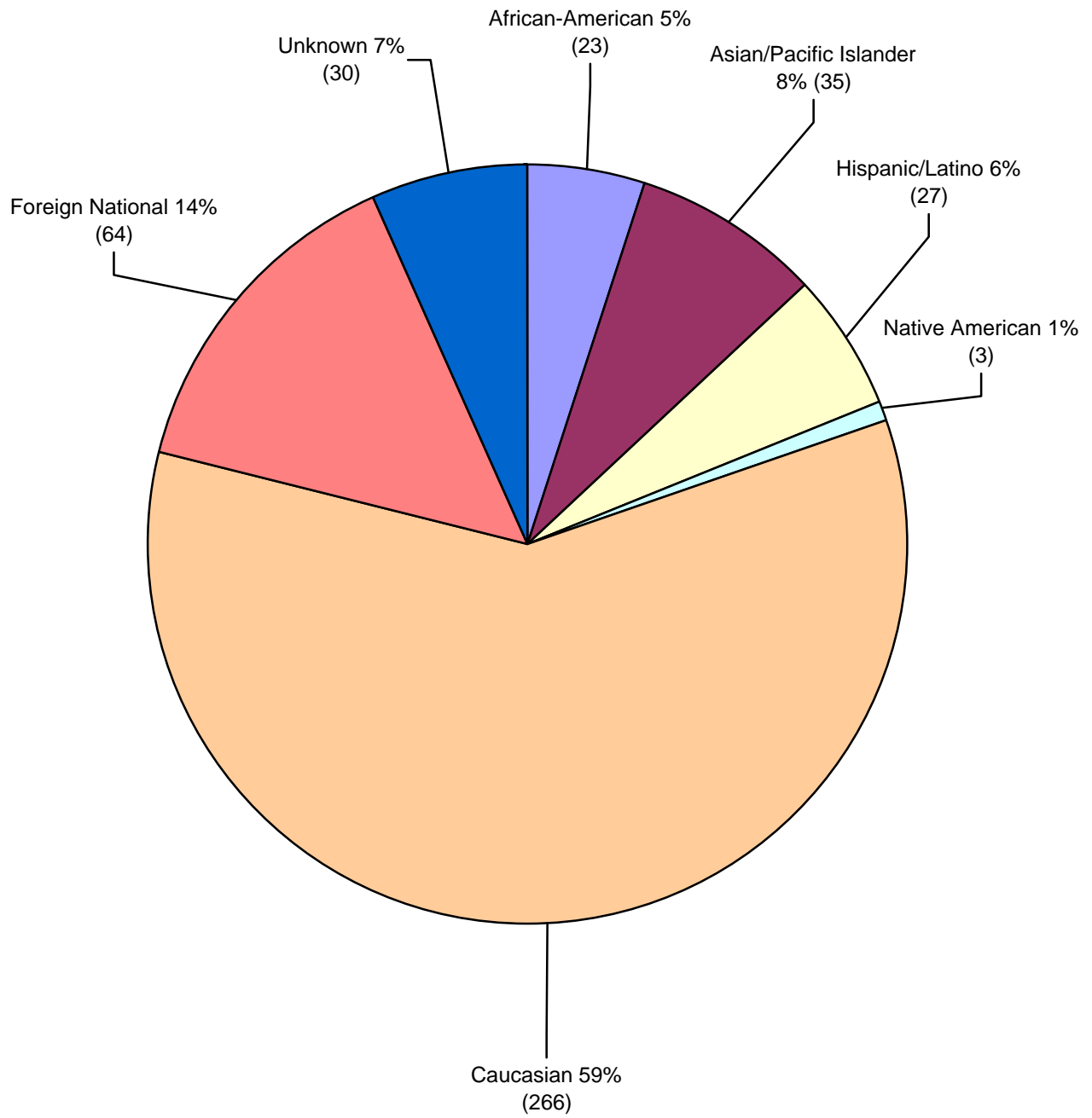


CHART XVII
FIRST-YEAR CLASS, 2007 - MULTICULTURAL (excludes students who did not self identify)
SECONDARY SCHOOL CLASS RANK - FIRST AND SECOND DECILES, SECOND THROUGH FIFTH QUINTILES

APPLIED (718)												
	1ST DECILE		2ND DECILE		2ND QUINTILE		3RD QUINTILE		4TH QUINTILE		5TH QUINTILE	
	No.	%	No.	%	No.	%	No.	%	No.	%	No.	%
FEMALE	116	55.5%	37	17.7%	42	20.1%	11	5.3%	3	1.4%	0	0.0%
MALE	60	39.0%	46	29.9%	29	18.8%	12	7.8%	5	3.2%	2	1.3%
COMBINED	176	48.5%	83	22.9%	71	19.6%	23	6.3%	8	2.2%	2	0.5%
NOT RANKED=355												

ADMITTED (356)												
	1ST DECILE		2ND DECILE		2ND QUINTILE		3RD QUINTILE		4TH QUINTILE		5TH QUINTILE	
	No.	%	No.	%	No.	%	No.	%	No.	%	No.	%
FEMALE	93	71.5%	19	14.6%	16	12.3%	1	0.8%	1	0.8%	0	0.0%
MALE	49	54.4%	31	34.4%	8	9.0%	1	1.1%	1	1.1%	0	0.0%
COMBINED	142	64.6%	50	22.7%	24	10.9%	2	0.9%	2	0.9%	0	0.0%
NOT RANKED=136												

MATRICULATED (86)												
	1ST DECILE		2ND DECILE		2ND QUINTILE		3RD QUINTILE		4TH QUINTILE		5TH QUINTILE	
	No.	%	No.	%	No.	%	No.	%	No.	%	No.	%
FEMALE	23	67.7%	3	8.8%	6	17.7%	1	2.9%	1	2.9%	0	0.0%
MALE	7	36.8%	8	42.1%	3	15.8%	0	0.0%	1	5.3%	0	0.0%
COMBINED	30	56.6%	11	20.7%	9	17.0%	1	1.9%	2	3.8%	0	0.0%
NOT RANKED=33												

CHART XVIII
FIRST-YEAR CLASS, 2007 - MULTICULTURAL
(excludes students who did not self identify)
AVERAGE STANDARDIZED TEST RESULTS

SAT

	APPLIED			ADMITTED			MATRICULATED		
	Critical Reading	Math	Number	Critical Reading	Math	Number	Critical Reading	Math	Number
FEMALE	649	616	207	681	657	126	613	588	17
MALE	623	638	164	663	675	85	601	608	31
COMBINED	638	626	371	673	664	211	608	595	48

ACT

	APPLIED		ADMITTED		MATRICULATED	
	COM	NUM	COM	NUM	COM	NUM
FEMALE	26.9	133	28.4	84	27.6	21
MALE	28.1	100	29.6	61	29.0	17
COMBINED	27.4	233	28.9	145	28.2	38

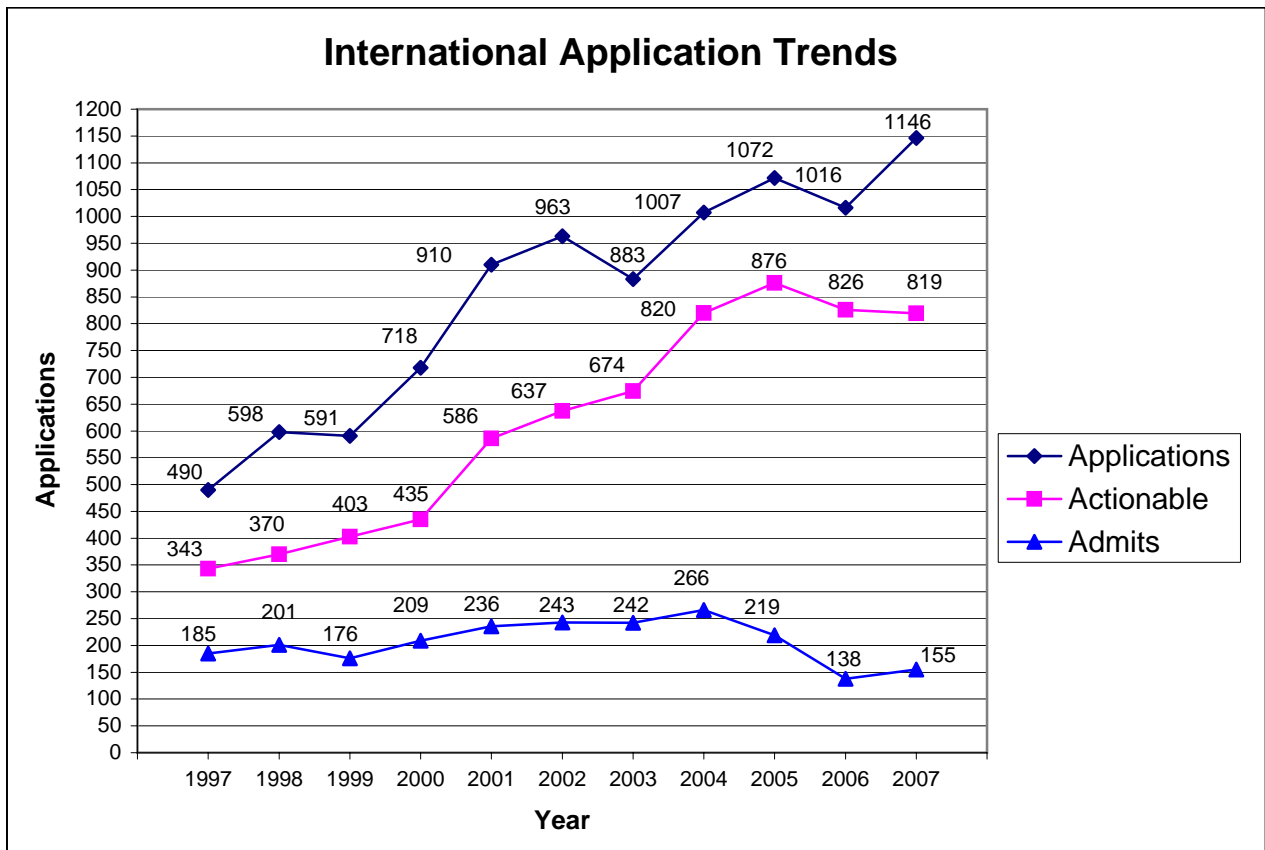
ACT KEY: COM=Composite, NUM=Number

**CHART XIX
INTERNATIONAL REPORT**

Includes only students who are citizens of other countries
U.S. permanent residents and dual citizens are not included.

Year	Inquiries	Applications	Actionable	Admits	Matriculants
1997	1966	490	343	185	33
1998	2411	598	370	201	27
1999	2241	591	403	176	38
2000	2572	718	435	209	43
2001	3284	910	586	236	62
2002	3811	963	637	243	50
2003	4309	883	674	242	54
2004	4542	1007	820	266	60
2005	3402	1072	876	219	48
2006	2717	1016	826	138	38
2007	2897	1146	819	155	64

Applied and Admitted totals include four (4) deferrals to Fall 2008.



Sixty-three (63) new international students enrolled, including 3 exchange students, from the following countries: Bangladesh, Canada, Colombia, Ecuador, Ghana, Guyana, India, Indonesia Malaysia, Mexico, Nepal, P.R. China, Pakistan, Russia, South Africa, South Korea, Turkey, Ukraine, and United Kingdom.

CHART XX
FIRST-YEAR CLASS, 2007 - INTERNATIONAL
SECONDARY SCHOOL CLASS RANK

APPLIED QUINTILES (1039)										
	I		II		III		IV		V	
FEMALE	221		21		4		0		0	
MALE	270		26		5		4		1	
COMBINED	491	89.0%	47	8.5%	9	1.6%	4	0.7%	1	0.2%
NOT RANKED=487										

ADMITTED QUINTILES (148)										
	I		II		III		IV		V	
FEMALE	34		7		0		0		0	
MALE	41		5		0		1		0	
COMBINED	75	85.2%	12	13.6%	0	0.0%	1	1.1%	0	0.0%
NOT RANKED=60										

MATRICULATED QUINTILES (58)										
	I		II		III		IV		V	
FEMALE	11		3		0		0		0	
MALE	24		2		0		0		0	
COMBINED	35	87.5%	5	12.5%	0	0.0%	0	0.0%	0	0.0%
NOT RANKED=18										

**CHART XXI
FIRST-YEAR CLASS, 2007 - INTERNATIONAL
AVERAGE TEST RESULTS**

TEST OF ENGLISH AS A FOREIGN LANGUAGE (TOEFL)

	APPLIED		ADMITTED		MATRICULATED	
	TOEFL	Number	TOEFL	Number	TOEFL	Number
FEMALE	261	275	267	47	264	18
MALE	262	293	264	50	258	24
COMBINED	261	568	266	97	261	42
NOT INCLUDED		471		51		16

All TOEFL scores have been converted to the
computer-based scale.

**CHART XXII
FIRST-YEAR CLASS, 2006 - INTERNATIONAL
AVERAGE STANDARDIZED TEST RESULTS**

SAT

	APPLIED			ADMITTED			MATRICULATED		
	Critical Reading	Math	Number	Critical Reading	Math	Number	Critical Reading	Math	Number
FEMALE	600	687	355	615	710	60	590	696	20
MALE	592	698	455	632	719	75	610	715	33
COMBINED	596	693	810	624	715	135	602	708	53

ACT

	APPLIED		ADMITTED		MATRICULATED	
	COM	NUM	COM	NUM	COM	NUM
FEMALE	26.4	12	31.0	3	N/A	0
MALE	26.2	13	30.0	3	30.0	1
COMBINED	26.3	25	30.5	6	30.0	1

ACT KEY: COM=Composite, NUM=Number

**CHART XXIII
FIRST-YEAR CLASS, 2007
PUBLIC AND NON-PUBLIC SCHOOLS**

		APPLIED	ADMITTED	% ADMITTED	MATRICULATED	%MATRICULATED
FEMALE	PUBLIC	1110	574	51.7%	164	28.6%
	NON-PUBLIC	799	274	34.3%	68	24.8%
	UNKNOWN	36	11	30.6%	1	9.1%
	Total	1945	859		233	

		APPLIED	ADMITTED	% ADMITTED	MATRICULATED	%MATRICULATED
MALE	PUBLIC	938	455	48.5%	122	26.8%
	NON-PUBLIC	848	211	24.9%	70	33.2%
	UNKNOWN	46	9	19.6%	2	22.2%
	Total	1832	675		194	

		APPLIED	ADMITTED	% ADMITTED	MATRICULATED	%MATRICULATED
COMBINED	PUBLIC	2048	1029	50.2%	286	27.8%
	NON-PUBLIC	1647	485	29.4%	138	28.5%
	UNKNOWN	82	20	24.4%	3	15.0%
	Total	3777	1534		427	

ILLUSTRATION F
ENROLLMENT BY HIGH SCHOOL TYPE
FIRST-YEAR CLASS, 2007

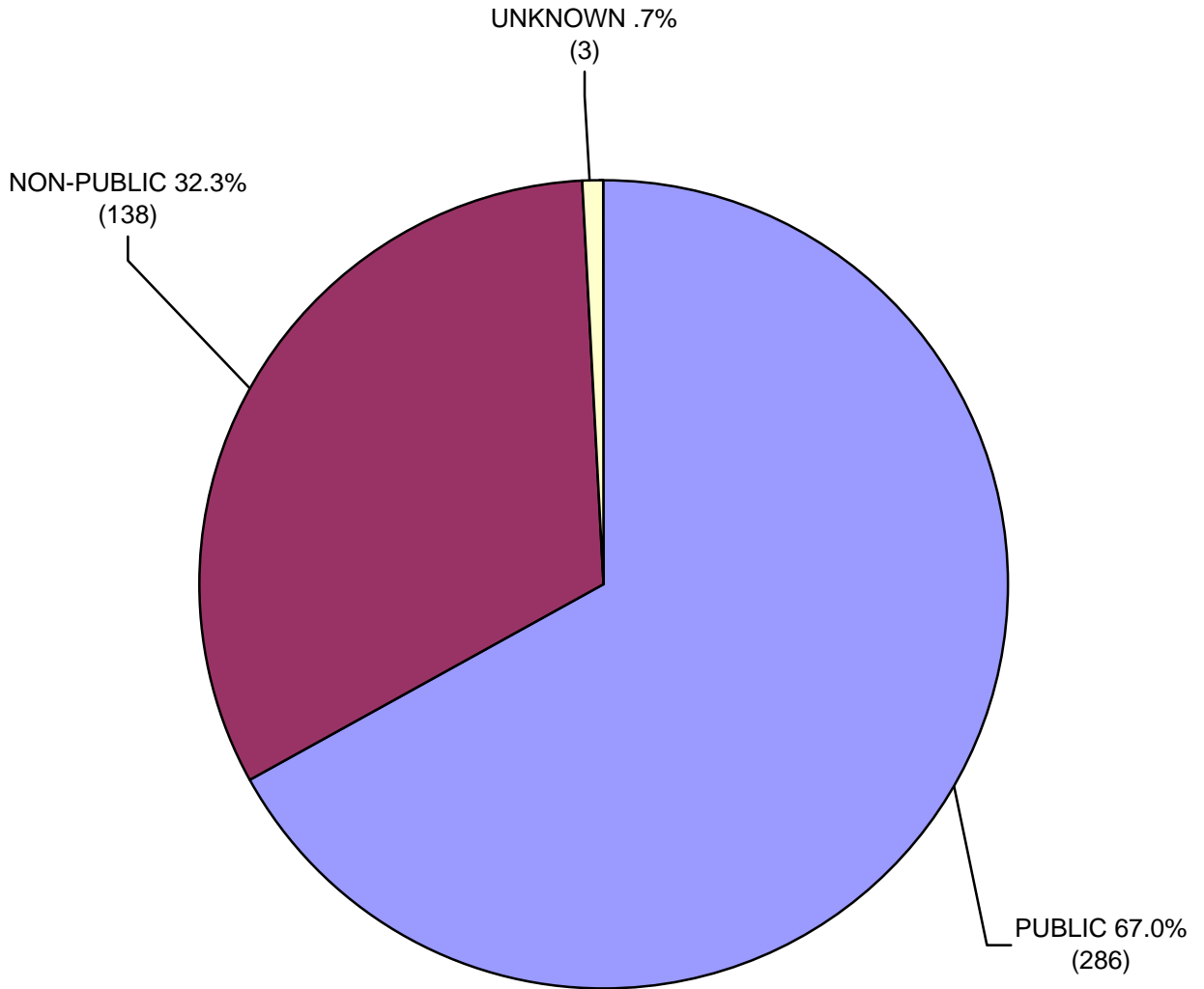


CHART XXIV
WAITING LIST STATISTICS - FALL SEMESTERS, 1997-2007

	NO. PLACED ON WAITING LIST	ADMITTED	% ADMITTED	MATRICULATED	% MATRICULATED
1997	195	4	2.1%	0	0.0%
1998	249	14	5.6%	4	28.6%
1999	144	45	31.3%	11	24.4%
2000	222	64	28.8%	31	48.4%
2001	152	68	44.7%	29	42.6%
2002	146	28	19.2%	11	39.3%
2003	244	1	0.4%	1	100.0%
2004	512	29	5.7%	22	75.9%
2005	603	31	5.1%	21	67.7%
2006	811	27	3.3%	23	85.2%
2007	743	16	2.2%	13	81.3%

CHART XXV
FIRST-CHOICE MAJOR, 2003-2007
Top seven disciplines among all entering students

2003 (class of 418)		2004 (class of 454)		2005 (class of 408)		2006 (class of 426)		2007 (class of 448)	
Biology	49	Biology	54	Biology	41	Biology	40	Biology	44
English	38	English	44	English	40	English	33	English	35
History	27	Math	27	Political Science	20	Political Science	31	Psychology	24
Political Science	23	Political Science	24	Math/History	19	History	22	Chemistry	18
Psychology	19	Psychology	22	Medicine	17	Psychology	22	Medicine	17
Economics/Math	16	History	19	Psychology	16	Economics	18	Economics	16
Computer Science	15	Physics	15	Physics	15	Physics	17	Math	16

CHART XXVI
Extracurricular Involvements of the Class of 2011

