

GRINNELL COLLEGE



2005
REPORT ON ADMISSION
AT GRINNELL COLLEGE

PREPARED BY

The Grinnell College Office of Admission

DECEMBER, 2005

TABLE OF CONTENTS

Introduction	1-2
CHART I	Fall Semester Admission Statistics (Applied, Admitted, Matriculated), 1985-2005.....	3
CHART II	Early Decision Statistics, 1985-2005.....	4
CHART III	Regular Decision Statistics, 1985-2005	5
CHART IV	First-Year, Regular Decision Statistics, 1985-2005	6
CHART V	Transfer Statistics, 1995-2005	7
CHART VI	Spring Semester Admission Statistics, 1985-2005	8
CHART VII	Male/Female Matriculants, 1985-2005.....	9
CHART VIII	Admission Statistics (Gender) for Fall Semester, 2005	10
CHART IX	Secondary School Class Rank by Quintile, 1985-2005	11
CHART X	Secondary School Class Rank, First-Year Class.....	12
ILLUSTRATION A	Quality of First-Year Class by High School Rank.....	13
CHART XI	Average SAT and ACT Results, First-Year Class.....	14
CHART XII	SAT Score Distribution, First-Year Class	15-16
CHART XIII	ACT Score Distribution, First-Year Class.....	17
ILLUSTRATION B	Yield and Composition of First-Year Class by Admission Rating	18
CHART XIV	Average SAT Results, All Matriculants, 1985-2005	19
CHART XV	Geographic Distribution by Home State (Applicants, Admits and Matriculants, 2000-2005)	20-21
ILLUSTRATION D	Students Enrolled by Geographic Region (Home State)	22
CHART XVI	U.S. Students of Color, Enrollment History, 1995-2005.....	23
ILLUSTRATION E	Ethnic Composition of Entering Class.....	24
CHART XVII	Secondary School Class Rank, First-Year Class, Multicultural	25
CHART XVIII	Average SAT and ACT Results, First-Year Class, Multicultural	26
CHART XIX	International Report, Fall 2005.....	27
CHART XX	Secondary School Class Rank, First-Year Class, International.....	28

CHART XXI	Average TOEFL Results, First-Year Class, International	29
CHART XXII	Average SAT and ACT Results, First-Year Class, International.....	30
CHART XXIII	High School Type, by Gender, First-Year Class	31
ILLUSTRATION F	Enrollment by High School Type, First-Year Class	32
CHART XXIV	Waiting List Action, 1995-2005	33
CHART XXV	First-Choice Major, Entering Class, 2001-2005	34
CHART XXVI	Extracurricular Profile, First-Year Class	35

INTRODUCTION

This report is being distributed to the faculty and administrative staff electronically and is available in hard copy to anyone who wishes a copy. It is prepared and distributed in the name of full disclosure and to enable all who so wish to learn a great deal about Grinnell College admission. It is hoped that the two faculty meeting admission discussions this semester, the College's admission website and the published meeting and annual summaries of the 2004-2005 work of the Faculty-Student Committee on Admission and Financial Aid also meet your needs for admission information. Finally, the entire enrollment division (admission and financial aid) staff and I remain available to respond to inquiries at any time. Here are a few highlights of the Report for your consideration:

The new class enrolled this fall had the best or was the largest in the following respects in the College's history:

1. Largest number of new students of color
2. Most new African-American students
3. Most new Latino/a students
4. Most new Asian American students
5. Highest percentage of new students of color
6. Most applications
7. Greatest selectivity

Other interesting highlights:

1. Largest number of Early Decision applicants in 15 years
2. With regard to transfer applicants over the last 10 years:
 - a. Rate of admission reduced by 2/3
 - b. Rate of yield highest over that period of time
3. Transfer goal for spring semester 2005 met for the second straight year (10 each spring)
4. Academic quality:
 - a. 89.2% of entering class graduated in top quintile of their graduating class
 - b. Highest academic quality in at least 20 years with 81.1% in the top decile of their graduating class
5. Fifty percent of the new class is from the Midwest
6. Biology and English remain the most popular intended majors
7. The most popular co-curricular activities in secondary school of our new students are: music, sports, community service, publications, theatre/dance and speech/debate.

Lastly, I especially want to thank the many professors and staff who helped make this another banner enrollment year by most accounts and measurements. Seldom did I ask a department or individual for admission assistance and not receive a quick, positive response. Faculty and staff contributed hundreds of hours in a wide variety of ways, both on and off campus, to help enroll the best students. Likewise, Connie Newport, a key administrator in the Office of Admission, has earned a special thank you for preparing the data contained in this report.

Jim Sumner
Dean of Admission and Financial Aid
December 2005

CHART I
FALL SEMESTER ADMISSION STATISTICS
(APPLIED, ADMITTED, MATRICULATED)
1985-2005

	Applied	Admitted	% Admitted	Matriculated	% Matriculated
1985	1343	1036	77.1%	426	41.1%
1986	1773	1028	58.0%	381	37.1%
1987	1813	1101	60.7%	359	32.6%
1988	1955	1121	57.3%	386	34.4%
1989	1881	1238	65.8%	399	32.2%
1990	1755	1184	67.5%	386	32.6%
1991	1717	1056	61.5%	373	35.3%
1992	2015	1225	60.8%	348	28.4%
1993	2212	1510	68.3%	489	32.4%
1994	2299	1250	54.4%	369	29.5%
1995	2170	1463	67.4%	367	25.1%
1996	2120	1397	65.9%	393	28.1%
1997	2918	1472	50.4%	465	31.6%
1998	2832	1231	43.5%	380	30.9%
1999	2476	1239	50.0%	356	28.7%
2000	2886	1303	45.1%	391	30.0%
2001	2960	1362	46.0%	401	29.4%
2002	3042	1405	46.2%	398	28.3%
2003	3058	1482	48.5%	418	28.2%
2004	3733	1543	41.3%	454	29.4%
2005	3923	1435	36.6%	408	28.4%

Applied and Admitted totals include eight (8) deferrals to Fall 2006
and five (5) special exchange students.

CHART II
EARLY DECISION, FALL SEMESTERS, 1985-2005

	APPLIED	ADMITTED	% ADMITTED	MATRICULATED	% MATRICULATED
1985	100	83	83.0%	64	77.1%
1986	186	134	72.0%	107	79.9%
1987	182	117	64.3%	77	65.8%
1988	163	113	69.3%	84	74.3%
1989	138	91	65.9%	65	71.4%
1990	172	132	76.7%	104	78.8%
1991	151	121	80.1%	92	76.0%
1992	138	108	78.3%	82	75.9%
1993	147	108	73.5%	78	72.2%
1994	142	103	72.5%	77	74.8%
1995	105	76	72.4%	66	86.8%
1996	71	53	74.6%	45	84.9%
1997	89	59	66.3%	51	86.4%
1998	91	64	70.3%	60	93.8%
1999	88	41	46.6%	35	85.4%
2000	78	49	62.8%	45	91.8%
2001	66	43	65.2%	39	90.7%
2002	72	57	79.2%	53	93.0%
2003	119	94	79.0%	88	93.6%
2004	134	97	72.4%	90	92.8%
2005	148	101	68.2%	95	94.1%

Applied and Admitted totals include one (1) deferral to Fall 2006.

**CHART III
REGULAR DECISION, FALL SEMESTERS, 1985-2005
ALL NEW STUDENTS - FIRST-YEAR AND TRANSFER**

	APPLIED	ADMITTED	% ADMITTED	MATRICULATED	% MATRICULATED
1985	1243	953	76.7%	362	38.0%
1986	1587	894	56.3%	274	30.6%
1987	1631	984	60.3%	282	28.7%
1988	1792	1008	56.3%	302	30.0%
1989	1743	1147	65.8%	334	29.1%
1990	1583	1052	66.5%	282	26.8%
1991	1566	935	59.7%	281	30.1%
1992	1877	1117	59.5%	266	23.8%
1993	2065	1402	67.9%	408	29.1%
1994	2157	1147	53.2%	292	25.5%
1995	2065	1387	67.2%	301	21.7%
1996	2049	1344	65.6%	348	25.9%
1997	2829	1413	49.9%	414	29.3%
1998	2754	1167	42.4%	320	27.4%
1999	2412	1198	49.7%	321	26.8%
2000	2808	1254	44.7%	346	27.6%
2001	2894	1319	45.6%	362	27.4%
2002	2970	1348	45.4%	345	25.6%
2003	2939	1388	47.2%	330	23.8%
2004	3599	1446	40.2%	364	25.2%
2005	3775	1334	35.3%	313	23.5%

Applied and Admitted totals include seven (7) deferrals to Fall 2006.

**CHART IV
FIRST-YEAR STATISTICS - REGULAR DECISION
FALL SEMESTERS, 1995-2005**

	APPLIED	ADMITTED	% ADMITTED	MATRICULATED	% MATRICULATED
1995	1901	1270	66.8%	246	19.4%
1996	1893	1270	67.1%	317	25.0%
1997	2619	1337	51.1%	380	28.4%
1998	2552	1108	43.4%	292	26.4%
1999	2217	1134	51.2%	290	25.6%
2000	2589	1200	46.3%	346	28.8%
2001	2635	1238	47.0%	321	25.9%
2002	2706	1279	47.3%	316	24.7%
2003	2730	1349	49.4%	317	23.5%
2004	3418	1404	41.1%	345	24.6%
2005	3582	1297	36.2%	294	22.7%

Applied and Admitted totals include seven (7) deferrals to Fall 2006.

CHART V
TRANSFER STATISTICS, FALL SEMESTERS, 1995-2005

	APPLIED	ADMITTED	% ADMITTED	MATRICULATED	% MATRICULATED
1995	164	117	71.3%	55	47.0%
1996	156	74	47.4%	31	41.9%
1997	212	78	36.8%	36	46.2%
1998	193	51	26.4%	23	45.1%
1999	195	64	32.8%	31	48.4%
2000	219	54	24.7%	26	48.1%
2001	259	81	31.3%	41	50.6%
2002	264	69	26.1%	29	42.0%
2003	209	39	18.7%	13	33.3%
2004	181	42	23.2%	19	45.2%
2005	193	37	19.2%	19	51.4%

**CHART VI
SPRING ADMISSION STATISTICS, 1985-2005**

	APPLIED	ADMITTED	% ADMITTED	MATRICULATED	% MATRICULATED
1985	25	18	72.0%	14	77.8%
1986	19	7	36.8%	6	85.7%
1987	23	16	69.6%	12	75.0%
1988	19	14	73.7%	10	71.4%
1989	18	2	11.1%	2	100.0%
1990	12	2	16.7%	2	100.0%
1991	34	26	76.5%	17	65.4%
1992	19	8	42.1%	7	87.5%
1993	53	41	77.4%	18	43.9%
1994	13	2	15.4%	2	100.0%
1995	16	5	31.3%	4	80.0%
1996	16	10	62.5%	7	70.0%
1997	26	7	26.9%	6	85.7%
1998	35	10	28.6%	6	60.0%
1999	11	7	63.6%	3	42.9%
2000	21	6	28.6%	5	83.3%
2001	28	8	28.6%	5	62.5%
2002	31	15	48.4%	8	53.3%
2003	17	9	52.9%	7	77.8%
2004	38	20	52.6%	10	50.0%
2005	34	25	73.5%	10	40.0%

**CHART VII
TABLE OF MALE/FEMALE MATRICULANTS
FALL SEMESTERS, 1985-2005**

	MEN	% OF ENTERING CLASS	WOMEN	% OF ENTERING CLASS	TOTAL MATRICULATED
1985	204	47.9%	222	52.1%	426
1986	204	53.5%	177	46.5%	381
1987	196	54.6%	163	45.4%	359
1988	206	53.4%	180	46.6%	386
1989	190	47.6%	209	52.4%	399
1990	197	51.0%	189	49.0%	386
1991	159	42.6%	214	57.4%	373
1992	149	42.8%	199	57.2%	348
1993	235	48.1%	254	51.9%	489
1994	161	43.9%	206	56.1%	367
1995	170	46.3%	197	53.7%	367
1996	161	41.0%	232	59.0%	393
1997	200	43.0%	265	57.0%	465
1998	168	44.2%	212	55.8%	380
1999	172	48.3%	184	51.7%	356
2000	164	41.9%	227	58.1%	391
2001	189	47.1%	212	52.9%	401
2002	178	44.7%	220	55.3%	398
2003	195	46.7%	223	53.3%	418
2004	205	45.2%	249	54.8%	454
2005	193	47.3%	215	52.7%	408

Total matriculated includes five (5) special exchange students.

**CHART VIII
ADMISSION STATISTICS BY GENDER
FALL SEMESTER, 2005**

	Applied	Actionable	Admitted	% Admitted	Matriculated	% Matriculated	Deny	Withdrew	Incomplete	Admit/ Withdrew	Paid/ Withdrew
First-Year (Male)	1832	1528	635	41.6%	183	28.8%	854	104	239	435	12
First-Year (Female)	1898	1593	763	47.9%	206	27.0%	790	103	242	543	11
Transfer (Male)	103	64	15	23.4%	7	46.7%	46	16	26	7	1
Transfer (Female)	85	53	17	32.1%	7	41.2%	33	13	22	9	1
Special Exch. (Male)	3	3	3	100.0%	3	100.0%	0	0	0	0	0
Special Exch. (Female)	2	2	2	100.0%	2	100.0%	0	0	0	0	0
TOTALS	3923	3243	1435	44.2%	408	28.4%	1723	236	529	994	25

Applied and Admitted totals include eight (8) deferrals to Fall 2006.

**CHART IX
SECONDARY SCHOOL CLASS RANK BY QUINTILE - ALL MATRICULANTS
FALL SEMESTERS, 1985-2005**

	I	%	II	%	III	%	IV	%	V	%	UNKNOWN	TOTAL
1985	289	73.4%	90	22.8%	10	2.5%	5	1.3%	0	0.0%	32	426
1986	269	79.4%	57	16.8%	6	1.8%	4	1.2%	3	0.9%	42	381
1987	271	86.9%	30	9.6%	9	2.9%	1	0.3%	1	0.3%	47	359
1988	289	83.0%	45	12.9%	10	2.9%	3	0.9%	1	0.3%	38	386
1989	281	82.4%	42	12.3%	15	4.4%	3	0.9%	0	0.0%	58	399
1990	256	78.0%	55	16.8%	13	3.9%	3	0.9%	1	0.3%	58	386
1991	248	79.0%	44	14.0%	16	5.1%	4	1.3%	2	0.6%	59	373
1992	242	85.5%	28	9.9%	9	3.2%	3	1.1%	1	0.4%	65	348
1993	340	84.8%	41	10.2%	13	3.2%	5	1.2%	2	0.5%	82	483
1994	267	86.1%	35	11.3%	6	2.0%	1	0.3%	1	0.3%	59	369
1995	237	80.6%	49	16.7%	5	1.7%	2	0.7%	1	0.3%	73	367
1996	259	82.5%	43	13.7%	12	3.8%	0	0.0%	0	0.0%	79	393
1997	311	86.4%	46	12.8%	2	0.5%	1	0.3%	0	0.0%	105	465
1998	275	86.2%	38	11.9%	4	1.3%	1	0.3%	1	0.3%	61	380
1999	231	79.9%	54	18.7%	4	1.4%	0	0.0%	0	0.0%	69	358
2000	252	85.7%	38	12.9%	3	1.0%	1	0.3%	0	0.0%	97	391
2001	240	83.3%	43	14.9%	3	1.0%	2	0.7%	0	0.0%	113	401
2002	215	81.7%	41	15.6%	4	1.5%	1	0.4%	2	0.8%	135	398
2003	247	81.3%	50	16.4%	7	2.3%	0	0.0%	0	0.0%	114	418
2004	283	88.2%	36	11.2%	2	0.6%	0	0.0%	0	0.0%	133	454
2005	257	89.2%	22	7.7%	6	2.1%	3	1.0%	0	0.0%	120	408

Percentages based on a total of 288 matriculants whose class rank was reported.

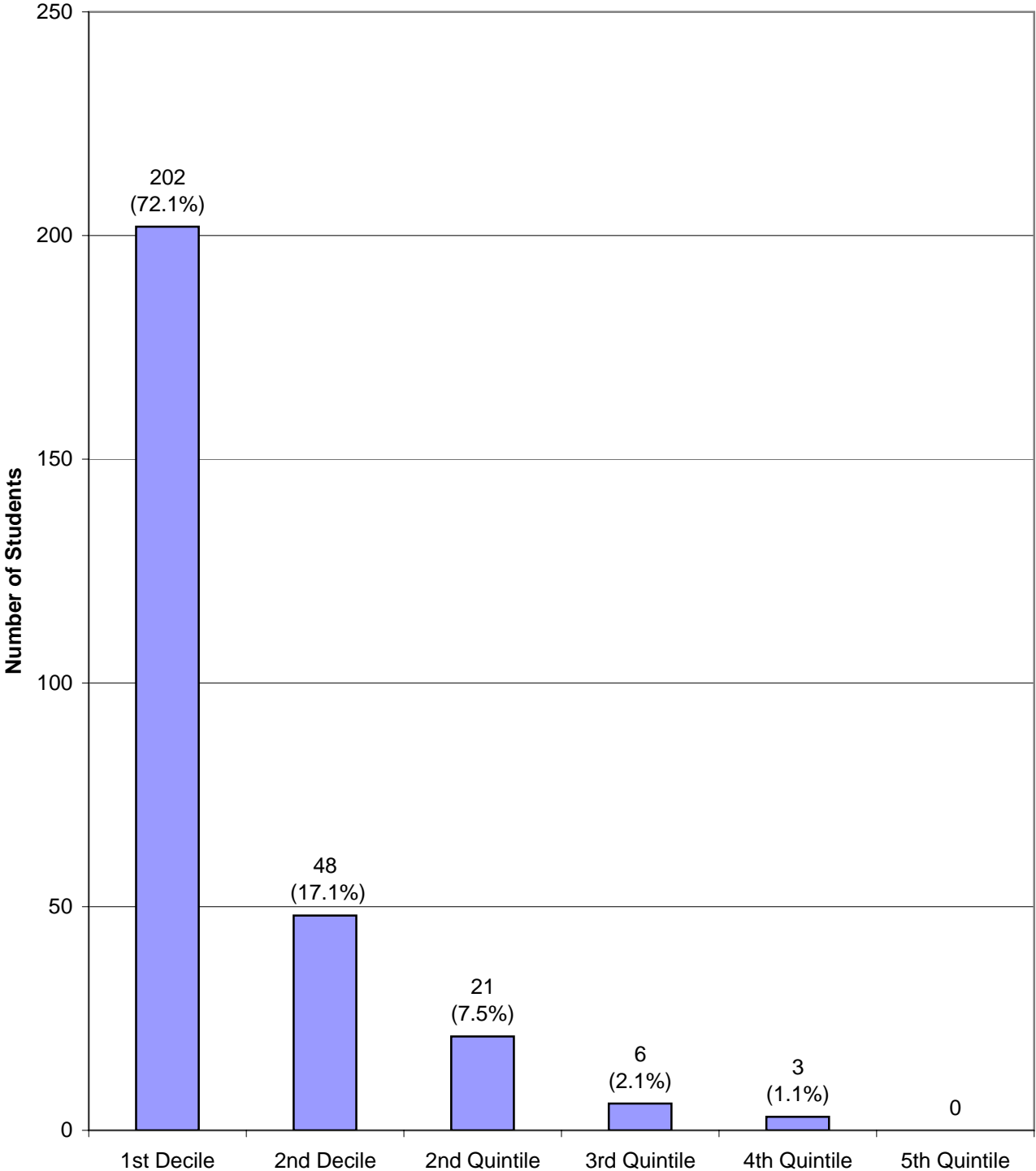
CHART X
FIRST-YEAR CLASS, FALL 2005
SECONDARY SCHOOL CLASS RANK - FIRST AND SECOND DECILES, SECOND THROUGH FIFTH QUINTILES

APPLIED (3730)	1ST DECILE		2ND DECILE		2ND QUINTILE		3RD QUINTILE		4TH QUINTILE		5TH QUINTILE	
	No.	%	No.	%	No.	%	No.	%	No.	%	No.	%
	FEMALE	655	65.6%	176	17.6%	119	11.9%	34	3.4%	11	1.1%	3
MALE	480	50.7%	201	21.2%	188	19.9%	56	5.9%	19	2.0%	3	0.3%
COMBINED	1135	58.4%	377	19.4%	307	15.8%	90	4.6%	30	1.5%	6	0.3%
NOT RANKED=1785												

ADMITTED (1398)	1ST DECILE		2ND DECILE		2ND QUINTILE		3RD QUINTILE		4TH QUINTILE		5TH QUINTILE	
	No.	%	No.	%	No.	%	No.	%	No.	%	No.	%
	FEMALE	426	86.4%	47	9.5%	20	4.1%	0	0.0%	0	0.0%	0
MALE	318	75.0%	69	16.3%	26	6.1%	8	1.9%	3	0.7%	0	0.0%
COMBINED	744	81.1%	116	12.7%	46	5.0%	8	0.9%	3	0.3%	0	0.0%
NOT RANKED=481												

MATRICULATED (389)	1ST DECILE		2ND DECILE		2ND QUINTILE		3RD QUINTILE		4TH QUINTILE		5TH QUINTILE	
	No.	%	No.	%	No.	%	No.	%	No.	%	No.	%
	FEMALE	116	81.1%	18	12.6%	9	6.3%	0	0.0%	0	0.0%	0
MALE	86	62.8%	30	21.9%	12	8.7%	6	4.4%	3	2.2%	0	0.0%
COMBINED	202	72.1%	48	17.1%	21	7.5%	6	2.1%	3	1.1%	0	0.0%
NOT RANKED=109												

**ILLUSTRATION A
QUALITY OF FIRST-YEAR CLASS
BY HIGH SCHOOL RANK IN CLASS**



**CHART XI
FIRST-YEAR CLASS, FALL 2005
AVERAGE STANDARDIZED TEST RESULTS**

SCHOLASTIC ASSESSMENT TEST - SAT

	APPLIED			ADMITTED			MATRICULATED		
	Verbal	Math	Number	Verbal	Math	Number	Verbal	Math	Number
FEMALE	665	658	1046	703	686	486	690	665	122
MALE	649	686	1139	685	710	421	681	690	116
COMBINED	657	673	2185	695	697	907	686	677	238

AMERICAN COLLEGE TEST - ACT

	APPLIED		ADMITTED		MATRICULATED	
	COM	NUM	COM	NUM	COM	NUM
FEMALE	28.7	608	30.6	271	30.3	80
MALE	29.3	450	30.7	206	30.2	66
COMBINED	28.9	1058	30.7	477	30.3	146

ACT KEY: COM=Composite, NUM=Number

**CHART XII
FIRST-YEAR CLASS, FALL 2005
SAT SCORE DISTRIBUTION - VERBAL**

RANGE	GENDER	APPLIED	ADMITTED	DENIED	MATRICULATED	PERCENT OF CLASS *
	MALE	200	111	77	26	
750-800	FEMALE	242	174	52	41	
	COMBINED	442	285	129	67	28.2%
	MALE	198	93	85	30	
700-740	FEMALE	213	122	75	28	
	COMBINED	411	215	160	58	24.4%
	MALE	246	102	128	26	
650-690	FEMALE	211	94	96	22	
	COMBINED	457	196	224	48	20.2%
	MALE	185	52	115	15	
600-640	FEMALE	155	51	86	13	
	COMBINED	340	103	201	28	11.8%
	MALE	158	41	106	11	
550-590	FEMALE	94	24	63	8	
	COMBINED	252	65	169	19	8.0%
	MALE	71	15	53	6	
500-540	FEMALE	71	14	53	5	
	COMBINED	142	29	106	11	4.6%
	MALE	42	4	33	0	
450-490	FEMALE	39	6	33	4	
	COMBINED	81	10	66	4	1.7%
	MALE	26	3	21	2	
400-440	FEMALE	11	0	7	0	
	COMBINED	37	3	28	2	0.8%
	MALE	13	0	8	0	
Below 400	FEMALE	10	1	5	1	
	COMBINED	23	1	13	1	0.4%

*Based on number of scores submitted.

**CHART XII
FIRST-YEAR CLASS, FALL 2005
SAT SCORE DISTRIBUTION - MATH**

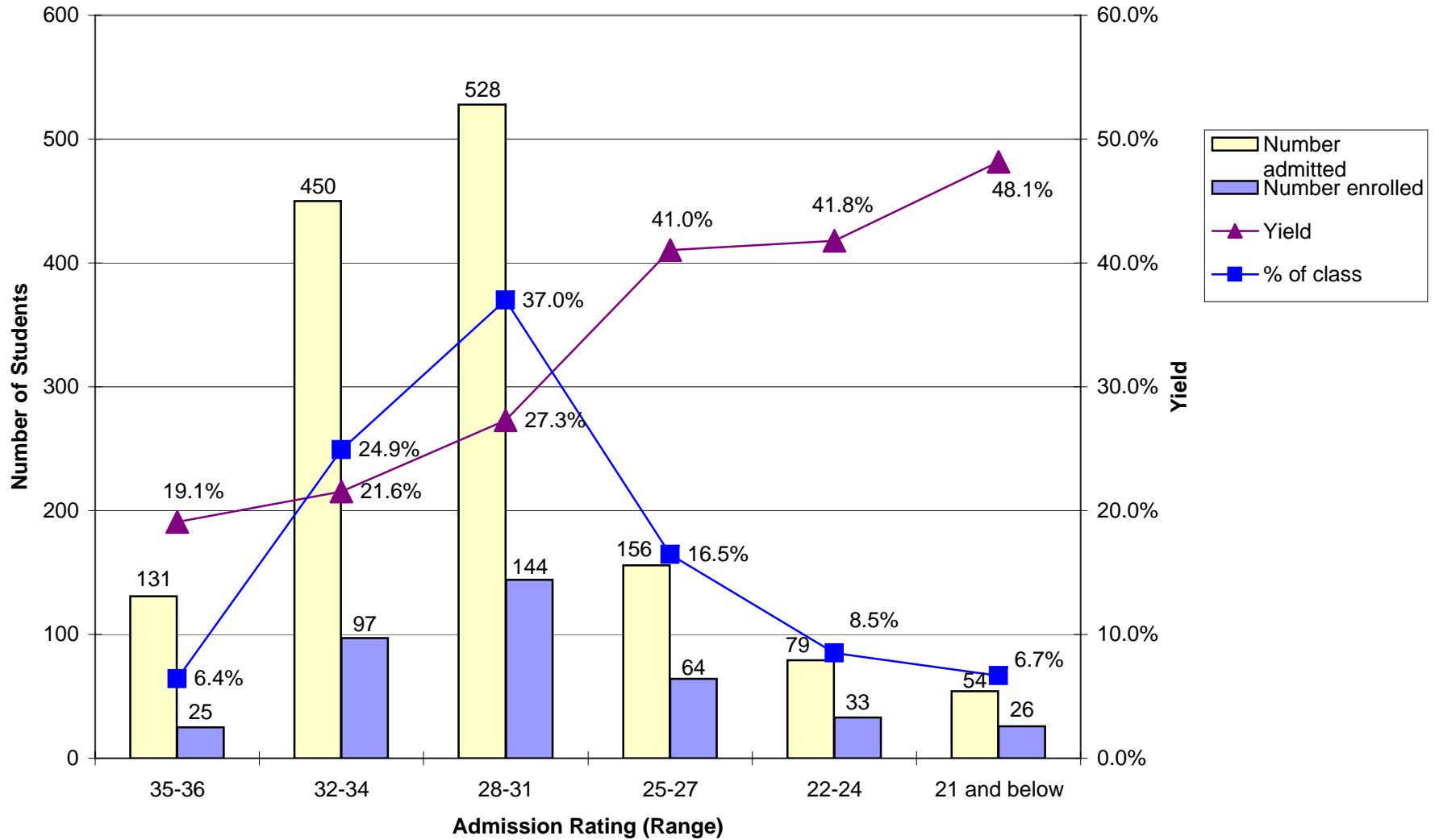
RANGE	GENDER	APPLIED	ADMITTED	DENIED	MATRICULATED	PERCENT OF CLASS *
	MALE	248	124	106	23	
750-800	FEMALE	139	84	43	13	
	COMBINED	387	208	149	36	15.1%
	MALE	299	136	148	36	
700-740	FEMALE	229	147	62	33	
	COMBINED	528	283	210	69	29.0%
	MALE	313	106	184	33	
650-690	FEMALE	264	141	103	37	
	COMBINED	577	247	287	70	29.4%
	MALE	136	31	88	10	
600-640	FEMALE	190	66	103	18	
	COMBINED	326	97	191	28	11.8%
	MALE	87	18	61	8	
550-590	FEMALE	123	35	82	13	
	COMBINED	210	53	143	21	8.8%
	MALE	34	4	26	4	
500-540	FEMALE	65	6	55	2	
	COMBINED	99	10	81	6	2.5%
	MALE	16	2	10	2	
450-490	FEMALE	21	5	14	4	
	COMBINED	37	7	24	6	2.5%
	MALE	4	0	2	0	
400-440	FEMALE	13	2	7	2	
	COMBINED	17	2	9	2	0.9%
	MALE	2	0	1	0	
Below 400	FEMALE	2	0	1	0	
	COMBINED	4	0	2	0	0.0%

**CHART XIII
FIRST-YEAR CLASS, 2005
ACT SCORE DISTRIBUTION**

COMPOSITE	GENDER	APPLIED	ADMITTED	DENIED	MATRICULATED	PERCENT OF CLASS *
34-36	MALE	55	44	7	11	15.1%
	FEMALE	41	38	2	11	
	COMBINED	96	82	9	22	
32-33	MALE	83	55	21	21	29.5%
	FEMALE	104	75	21	22	
	COMBINED	187	130	42	43	
30-31	MALE	106	50	45	12	21.2%
	FEMALE	145	78	54	19	
	COMBINED	251	128	99	31	
28-29	MALE	89	26	48	10	19.2%
	FEMALE	122	52	61	18	
	COMBINED	211	78	109	28	
24-27	MALE	76	21	44	6	8.2%
	FEMALE	132	21	96	6	
	COMBINED	208	42	140	12	
20-23	MALE	33	10	21	6	6.8%
	FEMALE	50	7	38	4	
	COMBINED	83	17	59	10	
17-19	MALE	7	0	4	0	0.0%
	FEMALE	13	0	7	0	
	COMBINED	20	0	11	0	
BELOW 16	MALE	1	0	0	0	0.0%
	FEMALE	1	0	1	0	
	COMBINED	2	0	1	0	

* Based on number of scores submitted.

**ILLUSTRATION B
YIELD AND COMPOSITION OF FIRST-YEAR CLASS
BY ADMISSION RATING**



**CHART XIV
AVERAGE SAT RESULTS
ALL MATRICULANTS - FALL SEMESTERS, 1985-2005**

	SAT VERBAL	SAT MATH
1985	590	611
1986	601	632
1987	607	634
1988	611	646
1989	604	636
1990	602	634
1991	608	633
1992	596	634
1993	602	642
1994	606	653
1995	595	637
1996	673	646
1997	674	659
1998	674	664
1999	668	658
2000	673	660
2001	668	665
2002	675	660
2003	666	671
2004	684	683
2005	685	678

BEGINNING IN 1996, SAT I SCORES ARE
REPORTED ON THE RECENTERED SCALE

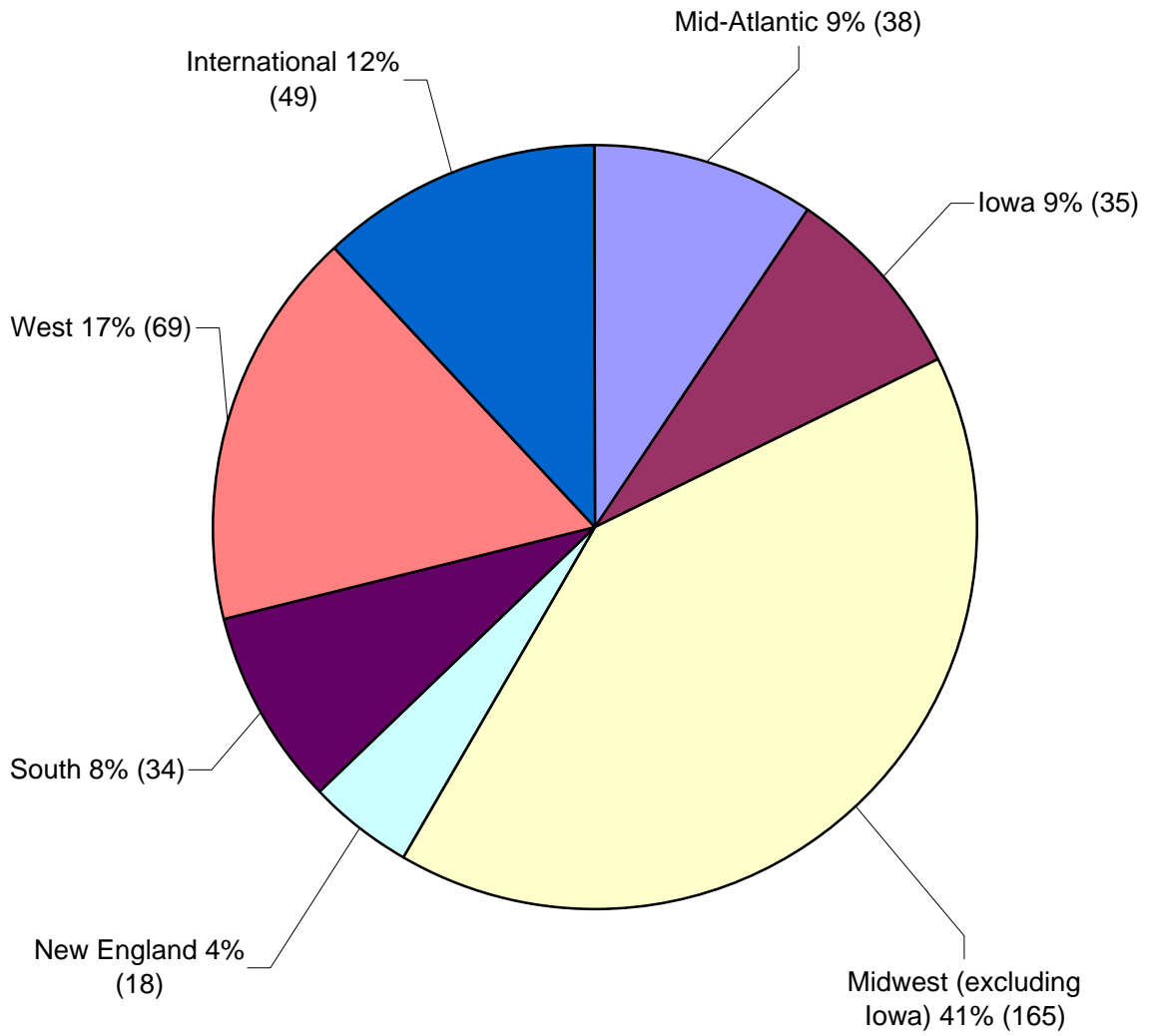
CHART XV
DISTRIBUTION BY HOME STATE
APPLICANTS (A), ADMITS (AD) AND MATRICULANTS (M)

	2000			2001			2002			2003			2004			2005		
	A	AD	M	A	AD	M	A	AD	M	A	AD	M	A	AD	M	A	AD	M
ALABAMA	11	2	1	6	5	2	14	5	0	7	3	1	9	5	1	12	5	0
ALASKA	5	3	1	4	3	1	6	4	0	5	2	1	10	5	0	6	4	1
ARIZONA	22	8	3	22	13	3	28	12	6	31	19	2	30	11	4	44	16	0
ARKANSAS	26	14	3	22	16	5	20	12	3	23	8	3	29	12	1	11	5	0
CALIFORNIA	168	79	17	137	72	12	169	80	20	192	112	39	310	116	27	302	101	26
COLORADO	54	37	20	61	32	6	63	39	10	63	36	9	71	35	13	84	44	13
CONNECTICUT	30	14	3	25	12	3	18	13	4	26	11	5	29	13	5	34	13	5
DELAWARE	2	1	0	3	3	1	3	3	1	0	0	0	3	1	0	2	1	1
WASH. , DC	22	9	0	20	7	4	14	7	2	15	5	1	12	8	2	23	9	8
FLORIDA	32	16	2	21	7	3	30	16	7	31	18	6	30	11	1	42	12	3
GEORGIA	19	13	3	25	13	5	21	9	3	18	9	1	22	11	1	22	11	2
GUAM	1	0	0	1	1	1	1	1	0	0	0	0	0	0	0	0	0	0
HAWAII	10	7	3	7	5	1	22	15	5	9	6	4	26	13	1	26	18	6
IDAHO	2	2	1	4	2	1	3	2	0	7	4	2	4	1	0	9	3	0
ILLINOIS	258	118	44	274	152	44	272	155	55	345	186	50	409	177	57	421	178	47
INDIANA	53	33	13	33	21	5	34	23	8	46	30	4	46	30	10	38	21	7
IOWA	241	114	48	237	124	62	208	111	41	227	116	57	225	102	48	211	85	35
KANSAS	40	20	7	55	33	11	53	32	16	43	23	12	63	34	14	61	30	10
KENTUCKY	7	4	0	8	4	2	12	9	1	11	6	1	15	11	3	16	13	6
LOUISIANA	7	4	1	14	6	3	10	2	1	10	5	1	6	1	1	10	2	1
MAINE	26	13	4	17	14	5	6	3	0	9	6	3	13	8	3	19	10	2
MARYLAND	50	30	10	42	19	6	41	27	8	42	22	6	42	17	4	59	21	6
MASSACHUSETTS	63	25	8	64	36	14	44	26	7	53	26	7	78	30	9	84	31	6
MICHIGAN	34	15	4	52	25	7	28	12	2	57	29	11	51	22	8	57	25	6
MINNESOTA	141	82	24	142	85	27	159	102	29	148	100	28	197	98	36	237	108	48
MISSISSIPPI	6	0	0	10	8	1	10	3	0	19	9	4	28	10	3	19	9	3

**CHART XV
DISTRIBUTION BY HOME STATE
APPLICANTS (A), ADMITS (AD) AND MATRICULANTS (M)**

CHART XI, PAGE 2	2000			2001			2002			2003			2004			2005		
	A	AD	M	A	AD	M	A	AD	M	A	AD	M	A	AD	M	A	AD	M
MISSOURI	78	49	15	65	33	7	87	58	12	75	47	12	89	49	10	105	59	14
MONTANA	2	2	1	6	4	0	2	1	0	5	1	0	6	2	1	6	2	1
NEBRASKA	30	14	4	31	12	3	26	13	5	24	15	5	30	20	8	49	26	9
NEVADA	6	3	1	5	3	2	3	1	0	4	4	2	8	1	1	6	3	1
NEW HAMPSHIRE	16	7	2	9	6	1	7	3	0	7	1	0	15	4	0	10	3	2
NEW JERSEY	40	17	5	25	12	3	37	20	6	29	21	7	49	23	6	32	9	3
NEW MEXICO	27	12	2	30	18	3	25	15	3	20	10	1	24	16	5	32	16	6
NEW YORK	109	59	17	93	57	13	99	54	20	95	60	9	114	37	12	145	53	18
NORTH CAROLINA	21	10	5	34	15	1	16	9	2	16	7	0	19	8	3	17	8	4
NORTH DAKOTA	8	4	1	4	1	0	6	5	1	3	2	1	1	0	0	1	0	0
OHIO	47	30	10	32	22	8	40	21	6	61	39	14	72	45	13	75	35	8
OKLAHOMA	15	8	3	13	7	1	11	5	1	9	5	3	12	7	2	13	10	4
OREGON	28	15	5	32	19	4	40	28	5	35	24	3	71	43	13	63	29	9
PENNSYLVANIA	40	21	6	46	21	7	29	14	5	38	19	4	44	17	6	53	15	2
PUERTO RICO	1	1	1	0	0	0	2	0	0	0	0	0	3	1	0	0	0	0
RHODE ISLAND	4	4	2	3	2	2	4	4	2	1	1	0	4	2	1	2	0	0
SOUTH CAROLINA	10	5	2	11	3	2	10	2	0	6	3	1	9	7	2	5	3	1
SOUTH DAKOTA	15	6	2	7	6	3	7	4	2	5	5	1	14	12	6	7	2	0
TENNESSEE	24	12	4	22	9	1	22	11	3	31	21	3	27	14	5	26	13	2
TEXAS	102	46	9	114	49	16	154	51	13	100	52	12	146	58	13	130	46	6
UTAH	22	10	1	18	10	2	15	9	3	11	7	2	12	8	3	14	9	1
VERMONT	7	5	2	6	4	0	8	5	4	3	1	0	6	3	0	12	6	3
VIRGIN ISLANDS	1	0	0	0	0	0	0	0	0	0	0	0	0	0	0	1	0	0
VIRGINIA	37	17	4	25	11	4	23	18	2	25	11	6	28	16	3	36	16	6
WASHINGTON	61	29	7	52	29	12	52	32	10	44	25	2	92	57	15	83	29	5
WEST VIRGINIA	5	4	2	3	2	1	1	1	1	6	5	2	4	3	0	3	1	0
WISCONSIN	88	45	17	69	44	14	80	49	20	87	56	24	99	48	14	101	43	12
WYOMING	5	4	0	8	4	1	3	1	1	7	4	2	6	5	3	4	1	0

ILLUSTRATION D
STUDENTS ENROLLED BY GEOGRAPHIC REGION
(HOME STATE)



**CHART XVI
U.S. STUDENTS OF COLOR
ENROLLMENT HISTORY, 1995-2005**

	<i>Class size</i>	<i>U.S. Multicultural</i>	<i>Percent of Class</i>	<i>African-American</i>	<i>Percent of Class</i>	<i>Latino/a</i>	<i>Percent of Class</i>	<i>Asian-American</i>	<i>Percent of Class</i>	<i>Native American</i>	<i>Percent of Class</i>	<i>**Unknown ethnicity</i>	<i>Percent of Class</i>
1995	367	45	12.3%	13	3.5%	18	4.9%	9	2.5%	5	1.4%	0	0.0%
1996	393	50	12.7%	13	3.3%	18	4.6%	19	4.8%	0	0.0%	0	0.0%
1997	451	50	11.1%	7	1.6%	22	4.9%	18	4.0%	3	0.7%	2	0.4%
1998	380	44	11.6%	11	2.9%	14	3.7%	19	5.0%	0	0.0%	32	8.4%
1999	356	54	15.2%	11	3.1%	22	6.2%	19	5.3%	2	0.6%	28	7.9%
2000	391	50	12.8%	18	4.6%	15	3.8%	15	3.8%	2	0.5%	43	11.0%
2001	401	53	13.2%	19	4.7%	13	3.2%	17	4.2%	4	1.0%	39	9.7%
2002	398	38	9.5%	7	1.8%	10	2.5%	19	4.8%	2	0.5%	39	9.8%
2003	418	71	17.0%	19	4.5%	21	5.0%	25	6.0%	6	1.4%	13	3.1%
2004	454	61	13.4%	18	4.0%	17	3.7%	25	5.5%	1	0.2%	27	5.9%
2005	408	83	20.3%	25	6.1%	27	6.6%	31	7.6%	0	0.0%	24	5.9%

**Beginning in 1998, there was a change in how this category was reported.

ILLUSTRATION E
ETHNIC COMPOSITION OF ENTERING CLASS

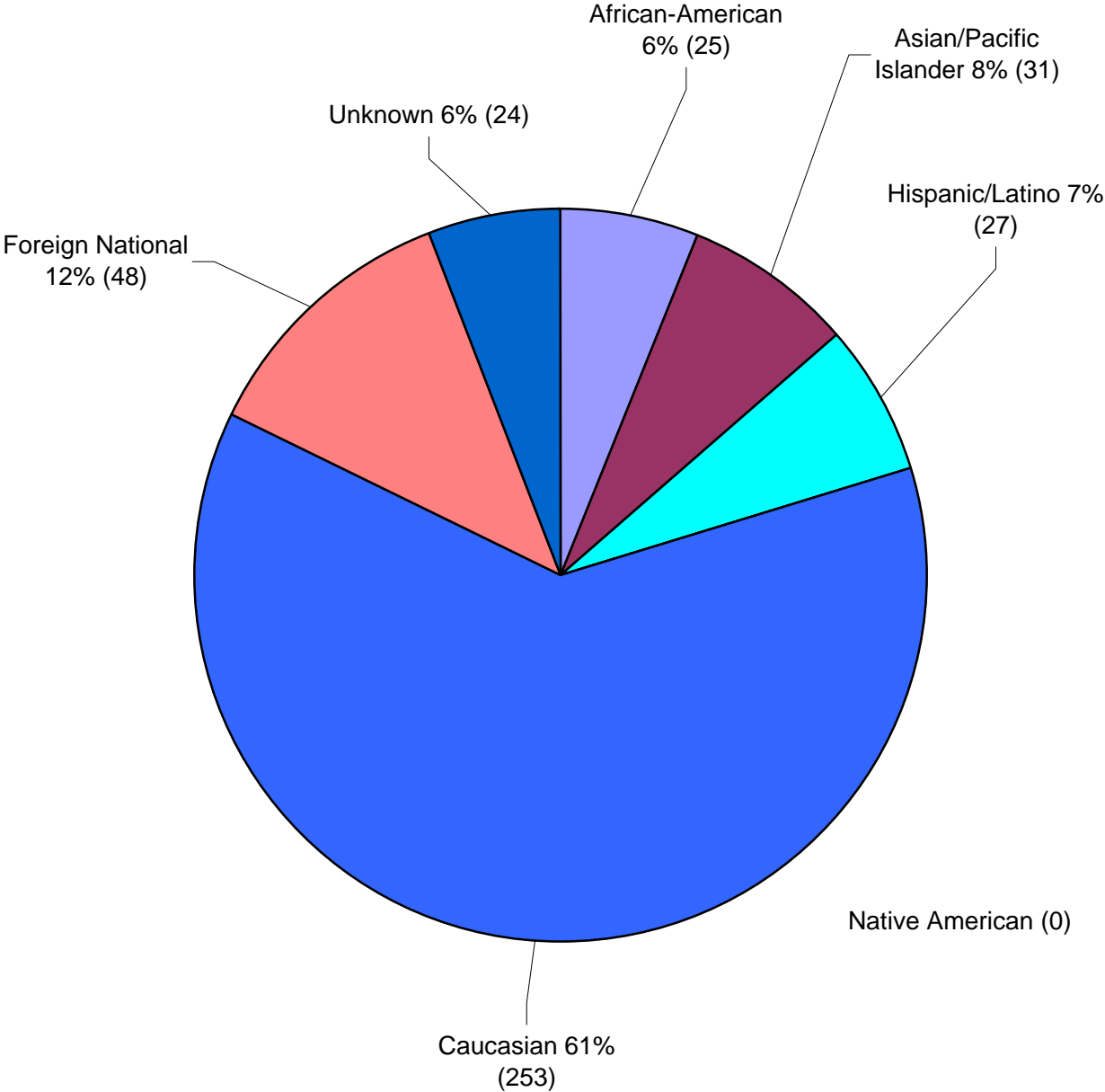


CHART XVII
FIRST-YEAR CLASS, 2005 - MULTICULTURAL (excludes students who did not self identify)
SECONDARY SCHOOL CLASS RANK - FIRST AND SECOND DECILES, SECOND THROUGH FIFTH QUINTILES

APPLIED (776)												
	1ST DECILE		2ND DECILE		2ND QUINTILE		3RD QUINTILE		4TH QUINTILE		5TH QUINTILE	
	No.	%	No.	%	No.	%	No.	%	No.	%	No.	%
FEMALE	110	57.0%	39	20.2%	31	16.1%	5	2.6%	7	3.6%	1	0.5%
MALE	67	40.6%	39	23.7%	37	22.4%	15	9.1%	7	4.2%	0	0.0%
COMBINED	177	49.4%	78	21.8%	68	19.0%	20	5.6%	14	3.9%	1	0.3%
NOT RANKED=418												

ADMITTED (297)												
	1ST DECILE		2ND DECILE		2ND QUINTILE		3RD QUINTILE		4TH QUINTILE		5TH QUINTILE	
	No.	%	No.	%	No.	%	No.	%	No.	%	No.	%
FEMALE	77	76.2%	14	13.9%	10	9.9%	0	0.0%	0	0.0%	0	0.0%
MALE	48	55.2%	22	25.3%	10	11.5%	4	4.6%	3	3.4%	0	0.0%
COMBINED	125	66.5%	36	19.2%	20	10.6%	4	2.1%	3	1.6%	0	0.0%
NOT RANKED=109												

MATRICULATED (79)												
	1ST DECILE		2ND DECILE		2ND QUINTILE		3RD QUINTILE		4TH QUINTILE		5TH QUINTILE	
	No.	%	No.	%	No.	%	No.	%	No.	%	No.	%
FEMALE	19	70.4%	2	7.4%	6	22.2%	0	0.0%	0	0.0%	0	0.0%
MALE	13	44.8%	7	24.0%	3	10.4%	3	10.4%	3	10.4%	0	0.0%
COMBINED	32	57.0%	9	16.1%	9	16.1%	3	5.4%	3	5.4%	0	0.0%
NOT RANKED=23												

CHART XVIII
FIRST-YEAR CLASS, 2005 - MULTICULTURAL
(excludes students who did not self identify)
AVERAGE STANDARDIZED TEST RESULTS

SAT

	APPLIED			ADMITTED			MATRICULATED		
	Verbal	Math	Number	Verbal	Math	Number	Verbal	Math	Number
FEMALE	643	625	220	675	648	104	619	590	23
MALE	653	662	189	681	682	96	658	626	27
COMBINED	648	642	409	678	665	200	640	609	50

ACT

	APPLIED		ADMITTED		MATRICULATED	
	COM	NUM	COM	NUM	COM	NUM
FEMALE	26.4	137	28.6	59	28.5	16
MALE	26.3	88	27.1	38	26.3	13
COMBINED	26.4	225	28.0	97	27.5	29

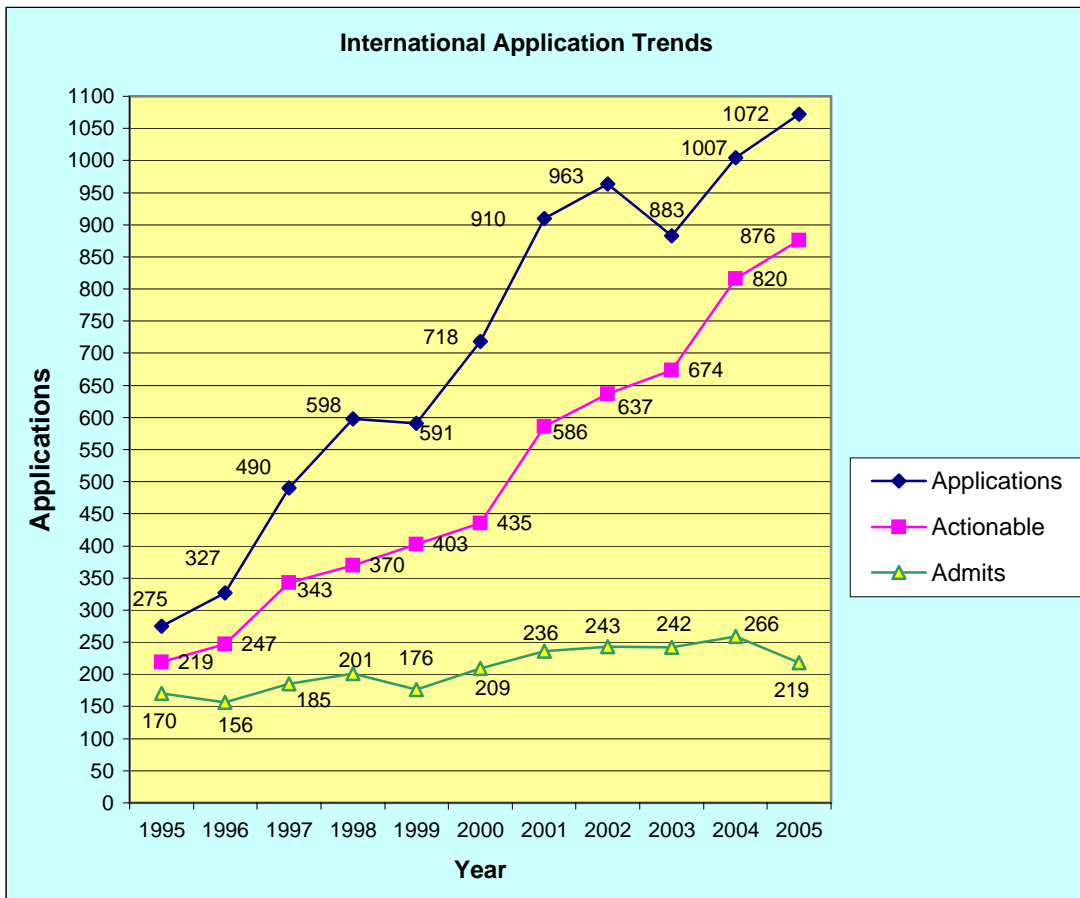
ACT KEY: COM=Composite, NUM=Number

**CHART XIX
INTERNATIONAL REPORT**

Includes only students who are citizens of other countries
U.S. permanent residents and dual citizens are not included.

Year	Inquiries	Applications	Actionable	Admits	Matriculants
1995	1719	275	219	170	43
1996	1730	327	247	156	27
1997	1966	490	343	185	33
1998	2411	598	370	201	27
1999	2241	591	403	176	38
2000	2572	718	435	209	43
2001	3284	910	586	236	62
2002	3811	963	637	243	50
2003	4309	883	674	242	54
2004	4542	1007	820	266	60
2005	3402	1072	876	219	48

Applied and Admitted totals include four (4) deferrals to Fall 2006.



Forty-eight (48) new international students enrolled, including 5 exchange students, from the following countries: Bangladesh, Belarus, Bulgaria, Costa Rica, Cyprus, Georgia, Ghana, Greece, Guatemala, Hong Kong, India, Israel, Japan, Mexico, Myanmar, Nepal, Nigeria, P.R. China, Pakistan, Russia, South Korea, Spain, Taiwan R.O.C., Thailand, Uganda, United Kingdom, Vietnam, and Zimbabwe.

CHART XX
FIRST-YEAR CLASS, 2005 - INTERNATIONAL
SECONDARY SCHOOL CLASS RANK

APPLIED QUINTILES (965)										
	I		II		III		IV		V	
FEMALE	131		13		8		2		1	
MALE	164		26		6		4		3	
COMBINED	295	82%	39	11%	14	4%	6	2%	4	1%
NOT RANKED=607										

ADMITTED QUINTILES (206)										
	I		II		III		IV		V	
FEMALE	44		2		0		0		0	
MALE	49		2		1		0		0	
COMBINED	93	95%	4	4%	1	1%	0	0%	0	0%
NOT RANKED=108										

MATRICULATED QUINTILES (39)										
	I		II		III		IV		V	
FEMALE	12		3		0		0		0	
MALE	12		1		1		0		0	
COMBINED	24	83%	4	14%	1	3%	0	0%	0	0%
NOT RANKED=10										

**CHART XXI
CLASS OF 2005 - INTERNATIONAL
AVERAGE TEST RESULTS**

TEST OF ENGLISH AS A FOREIGN LANGUAGE (TOEFL)

	APPLIED		ADMITTED		MATRICULATED	
	TOEFL	Number	TOEFL	Number	TOEFL	Number
FEMALE	266	252	273	68	269	16
MALE	265	306	276	69	275	16
COMBINED	266	558	275	137	272	32
NOT INCLUDED		407		69		7

All TOEFL scores have been converted to the
computer-based scale.

**CHART XXII
FIRST-YEAR CLASS, 2005 - INTERNATIONAL
AVERAGE STANDARDIZED TEST RESULTS**

SAT

	APPLIED			ADMITTED			MATRICULATED		
	Verbal	Math	Number	Verbal	Math	Number	Verbal	Math	Number
FEMALE	601	650	288	643	727	88	586	691	14
MALE	595	696	440	641	737	101	630	732	19
COMBINED	597	689	728	642	732	189	611	715	33

ACT

	APPLIED		ADMITTED		MATRICULATED	
	COM	NUM	COM	NUM	COM	NUM
FEMALE	24.4	16	32.5	2	32.0	1
MALE	29.9	7	30.0	1	0.0	0
COMBINED	26.0	23	31.7	3	32.0	1

ACT KEY: COM=Composite, NUM=Number

**CHART XXIII
FIRST-YEAR CLASS, 2005
PUBLIC AND NON-PUBLIC SCHOOLS**

		APPLIED	ADMITTED	% ADMITTED	MATRICULATED	%MATRICULATED
FEMALE	PUBLIC	1183	528	44.6%	142	26.9%
	NON-PUBLIC	681	223	32.7%	59	26.5%
	UNKNOWN	34	12	35.3%	5	41.7%
	Total	1898	763		206	

		APPLIED	ADMITTED	% ADMITTED	MATRICULATED	%MATRICULATED
MALE	PUBLIC	982	401	40.8%	128	31.9%
	NON-PUBLIC	823	228	27.7%	52	22.8%
	UNKNOWN	27	6	22.2%	3	50.0%
	Total	1832	635		183	

		APPLIED	ADMITTED	% ADMITTED	MATRICULATED	%MATRICULATED
COMBINED	PUBLIC	2165	929	42.9%	270	29.1%
	NON-PUBLIC	1504	451	30.0%	111	24.6%
	UNKNOWN	61	18	29.5%	8	44.4%
	Total	3730	1398		389	

**ILLUSTRATION F
ENROLLMENT BY HIGH SCHOOL TYPE
FIRST-YEAR CLASS**

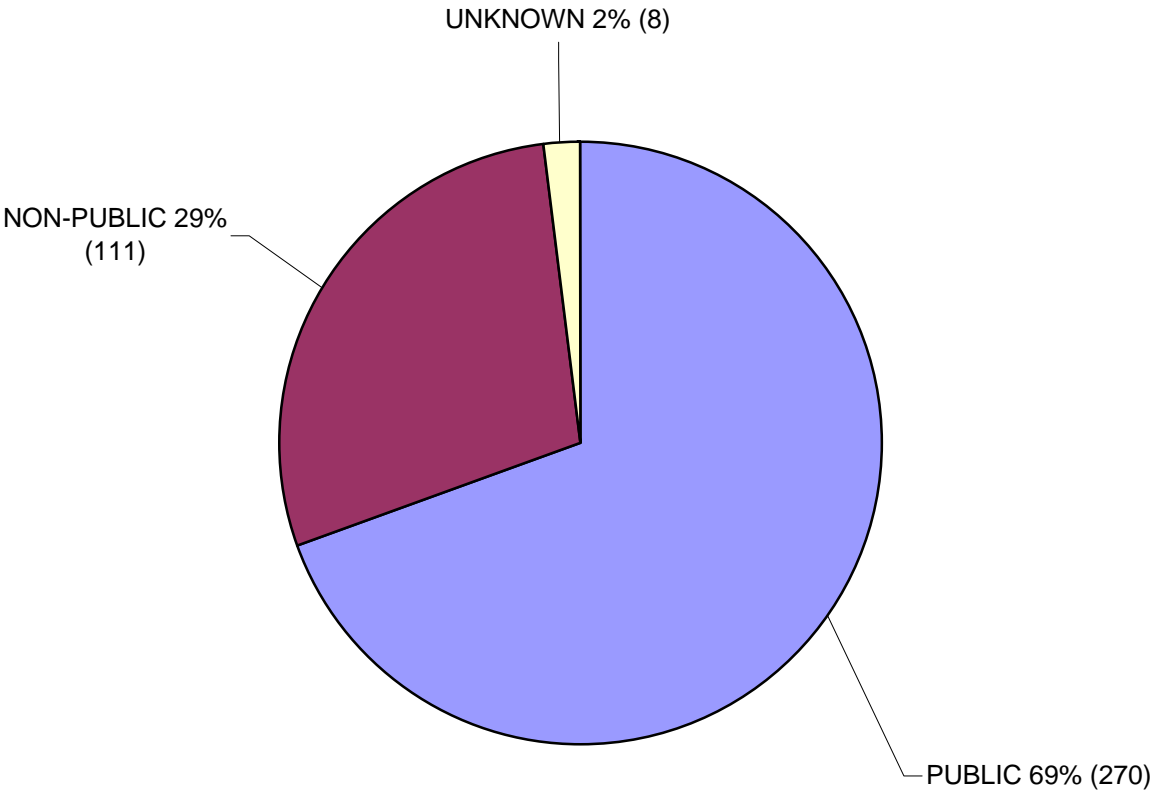


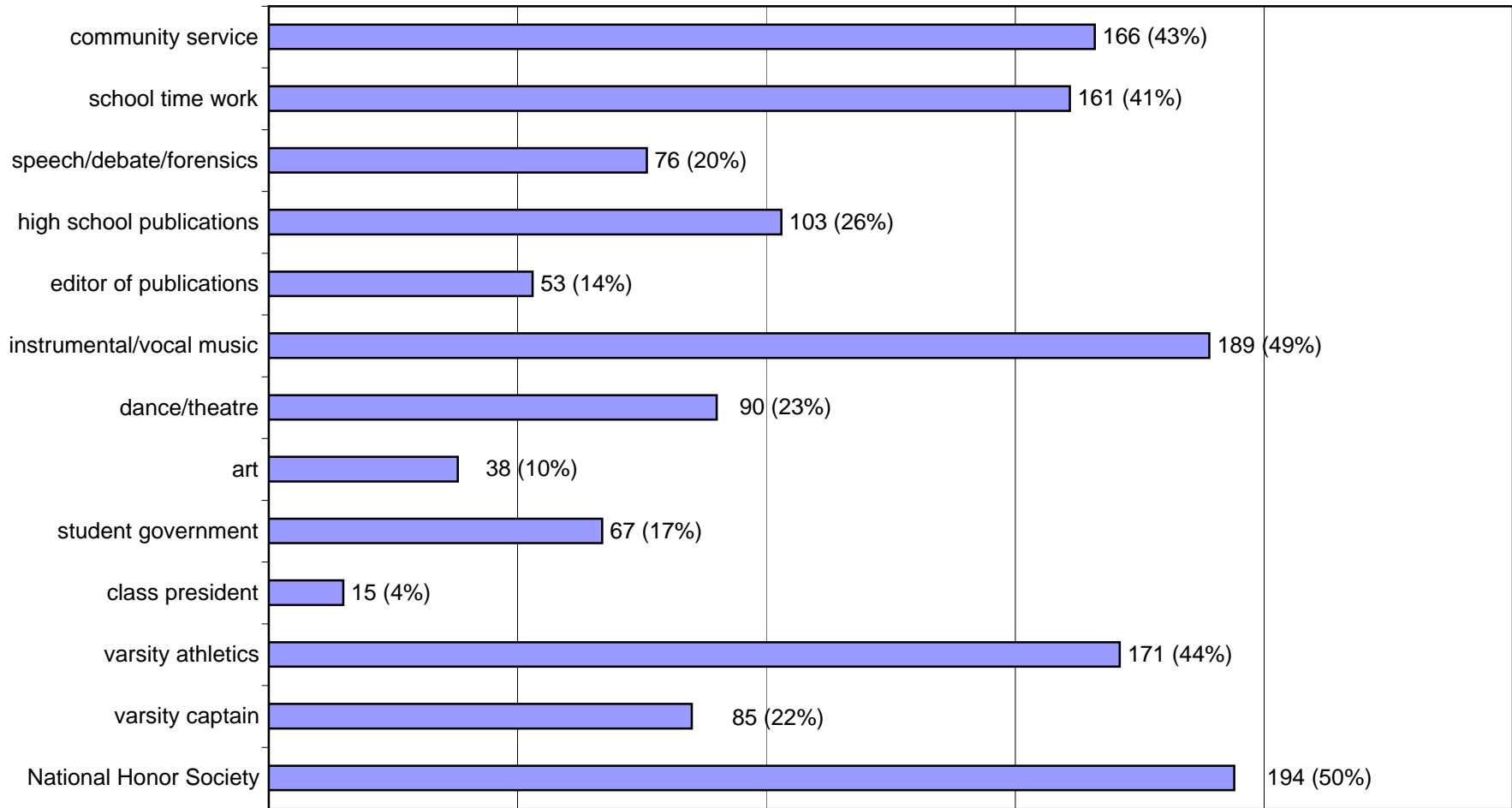
CHART XXIV
WAITING LIST STATISTICS - FALL SEMESTERS, 1995-2005

	NO. PLACED ON WAITING LIST	ADMITTED	% ADMITTED	MATRICULATED	% MATRICULATED
1995	167	68	40.7%	26	38.2%
1996	128	32	25.0%	14	43.8%
1997	195	4	2.1%	0	0.0%
1998	249	14	5.6%	4	28.6%
1999	144	45	31.3%	11	24.4%
2000	222	64	28.8%	31	48.4%
2001	152	68	44.7%	29	42.6%
2002	146	28	19.2%	11	39.3%
2003	244	1	0.4%	1	100.0%
2004	512	29	5.7%	22	75.9%
2005	603	31	5.1%	21	67.7%

CHART XXV
FIRST-CHOICE MAJOR, 2001-2005
Top seven disciplines

2001 (class of 401)		2002 (class of 398)		2003 (class of 418)		2004 (class of 454)		2005 (class of 408)	
Biology	50	English	50	Biology	49	Biology	54	Biology	41
English	40	Biology	44	English	38	English	44	English	40
Computer Studies	31	Political Science	31	History	27	Math	27	Political Science	20
History	27	History	30	Political Science	23	Political Science	24	Math/History	19
Political Science	25	Economics	18	Psychology	19	Psychology	22	Medicine	17
Psychology	25	Psychology	18	Economics/Math	16	History	19	Psychology	16
Economics	20	Physics/Philosophy	16	Computer Science	15	Physics	15	Physics	15

CHART XXVI
Extracurricular Profile of the Class of 2009



Number of Students (Percentage of Entering First-Year Class)