

CHART I
FALL SEMESTER ADMISSION STATISTICS
(APPLIED, ADMITTED, MATRICULATED)
1984-2004

	Applied	Admitted	% Admitted	Matriculated	% Matriculated
1984	1209	1009	83.5%	433	42.9%
1985	1343	1036	77.1%	426	41.1%
1986	1773	1028	58.0%	381	37.1%
1987	1813	1101	60.7%	359	32.6%
1988	1955	1121	57.3%	386	34.4%
1989	1881	1238	65.8%	399	32.2%
1990	1755	1184	67.5%	386	32.6%
1991	1717	1056	61.5%	373	35.3%
1992	2015	1225	60.8%	348	28.4%
1993	2212	1510	68.3%	489	32.4%
1994	2299	1250	54.4%	369	29.5%
1995	2170	1463	67.4%	367	25.1%
1996	2120	1397	65.9%	393	28.1%
1997	2918	1472	50.4%	465	31.6%
1998	2832	1231	43.5%	380	30.9%
1999	2476	1239	50.0%	356	28.7%
2000	2886	1303	45.1%	391	30.0%
2001	2960	1362	46.0%	401	29.4%
2002	3042	1405	46.2%	398	28.3%
2003	3058	1482	48.5%	418	28.2%
2004	3733	1543	41.3%	454	29.4%

Applied and Admitted totals include twelve (12) deferrals to Fall 2005
and three (3) special exchange students.

CHART II
EARLY DECISION, FALL SEMESTERS, 1984-2004

	APPLIED	ADMITTED	% ADMITTED	MATRICULATED	% MATRICULATED
1984	105	92	87.6%	71	77.2%
1985	100	83	83.0%	64	77.1%
1986	186	134	72.0%	107	79.9%
1987	182	117	64.3%	77	65.8%
1988	163	113	69.3%	84	74.3%
1989	138	91	65.9%	65	71.4%
1990	172	132	76.7%	104	78.8%
1991	151	121	80.1%	92	76.0%
1992	138	108	78.3%	82	75.9%
1993	147	108	73.5%	78	72.2%
1994	142	103	72.5%	77	74.8%
1995	105	76	72.4%	66	86.8%
1996	71	53	74.6%	45	84.9%
1997	89	59	66.3%	51	86.4%
1998	91	64	70.3%	60	93.8%
1999	88	41	46.6%	35	85.4%
2000	78	49	62.8%	45	91.8%
2001	66	43	65.2%	39	90.7%
2002	72	57	79.2%	53	93.0%
2003	119	94	79.0%	88	93.6%
2004	134	97	72.4%	90	92.8%

Applied and Admitted totals include two (2) deferrals to Fall 2005.

CHART III
REGULAR DECISION, FALL SEMESTERS, 1984-2004
ALL NEW STUDENTS - FIRST-YEAR AND TRANSFER

	APPLIED	ADMITTED	% ADMITTED	MATRICULATED	% MATRICULATED
1984	1104	917	83.1%	362	39.5%
1985	1243	953	76.7%	362	38.0%
1986	1587	894	56.3%	274	30.6%
1987	1631	984	60.3%	282	28.7%
1988	1792	1008	56.3%	302	30.0%
1989	1743	1147	65.8%	334	29.1%
1990	1583	1052	66.5%	282	26.8%
1991	1566	935	59.7%	281	30.1%
1992	1877	1117	59.5%	266	23.8%
1993	2065	1402	67.9%	408	29.1%
1994	2157	1147	53.2%	292	25.5%
1995	2065	1387	67.2%	301	21.7%
1996	2049	1344	65.6%	348	25.9%
1997	2829	1413	49.9%	414	29.3%
1998	2754	1167	42.4%	320	27.4%
1999	2412	1198	49.7%	321	26.8%
2000	2808	1254	44.7%	346	27.6%
2001	2894	1319	45.6%	362	27.4%
2002	2970	1348	45.4%	345	25.6%
2003	2939	1388	47.2%	330	23.8%
2004	3599	1446	40.2%	364	25.2%

Applied and Admitted totals include ten (10) deferrals to Fall 2005.

**CHART IV
FIRST-YEAR STATISTICS - REGULAR DECISION
FALL SEMESTERS, 1994-2004**

	APPLIED	ADMITTED	% ADMITTED	MATRICULATED	% MATRICULATED
1994	2127	1186	55.8%	340	28.7%
1995	1901	1270	66.8%	246	19.4%
1996	1893	1270	67.1%	317	25.0%
1997	2619	1337	51.1%	380	28.4%
1998	2552	1108	43.4%	292	26.4%
1999	2217	1134	51.2%	290	25.6%
2000	2589	1200	46.3%	346	28.8%
2001	2635	1238	47.0%	321	25.9%
2002	2706	1279	47.3%	316	24.7%
2003	2730	1349	49.4%	317	23.5%
2004	3418	1404	41.1%	345	24.6%

Applied and Admitted totals include nine (9) deferrals to Fall 2005.

CHART V
TRANSFER STATISTICS, FALL SEMESTERS, 1994-2004

	APPLIED	ADMITTED	% ADMITTED	MATRICULATED	% MATRICULATED
1994	169	61	36.1%	27	44.3%
1995	164	117	71.3%	55	47.0%
1996	156	74	47.4%	31	41.9%
1997	212	78	36.8%	36	46.2%
1998	193	51	26.4%	23	45.1%
1999	195	64	32.8%	31	48.4%
2000	219	54	24.7%	26	48.1%
2001	259	81	31.3%	41	50.6%
2002	264	69	26.1%	29	42.0%
2003	209	39	18.7%	13	33.3%
2004	181	42	23.2%	19	45.2%

Applied and Admitted totals include one (1) deferral to Fall 2005.

**CHART VI
SPRING ADMISSION STATISTICS, 1984-2004**

	APPLIED	ADMITTED	% ADMITTED	MATRICULATED	% MATRICULATED
1984	27	20	74.1%	18	90.0%
1985	25	18	72.0%	14	77.8%
1986	19	7	36.8%	6	85.7%
1987	23	16	69.6%	12	75.0%
1988	19	14	73.7%	10	71.4%
1989	18	2	11.1%	2	100.0%
1990	12	2	16.7%	2	100.0%
1991	34	26	76.5%	17	65.4%
1992	19	8	42.1%	7	87.5%
1993	53	41	77.4%	18	43.9%
1994	13	2	15.4%	2	100.0%
1995	16	5	31.3%	4	80.0%
1996	16	10	62.5%	7	70.0%
1997	26	7	26.9%	6	85.7%
1998	35	10	28.6%	6	60.0%
1999	11	7	63.6%	3	42.9%
2000	21	6	28.6%	5	83.3%
2001	28	8	28.6%	5	62.5%
2002	31	15	48.4%	8	53.3%
2003	17	9	52.9%	7	77.8%
2004	38	20	52.6%	10	50.0%

**CHART VII
TABLE OF MALE/FEMALE MATRICULANTS
FALL SEMESTERS, 1984-2004**

	MEN	% OF ENTERING CLASS	WOMEN	% OF ENTERING CLASS	TOTAL MATRICULATED
1984	219	50.6%	214	49.4%	433
1985	204	47.9%	222	52.1%	426
1986	204	53.5%	177	46.5%	381
1987	196	54.6%	163	45.4%	359
1988	206	53.4%	180	46.6%	386
1989	190	47.6%	209	52.4%	399
1990	197	51.0%	189	49.0%	386
1991	159	42.6%	214	57.4%	373
1992	149	42.8%	199	57.2%	348
1993	235	48.1%	254	51.9%	489
1994	161	43.9%	206	56.1%	367
1995	170	46.3%	197	53.7%	367
1996	161	41.0%	232	59.0%	393
1997	200	43.0%	265	57.0%	465
1998	168	44.2%	212	55.8%	380
1999	172	48.3%	184	51.7%	356
2000	164	41.9%	227	58.1%	391
2001	189	47.1%	212	52.9%	401
2002	178	44.7%	220	55.3%	398
2003	195	46.7%	223	53.3%	418
2004	205	45.2%	249	54.8%	454

Total matriculated includes three (3) special exchange students.

**CHART VIII
ADMISSION STATISTICS BY GENDER
FALL SEMESTER, 2004**

	Applied	Actionable	Admitted	% Admitted	Matriculated	% Matriculated	Deny	Withdrew	Incomplete	Admit/ Withdrew	Paid/ Withdrew
First-Year (Male)	1712	1421	675	47.5%	197	29.2%	717	71	249	460	11
First-Year (Female)	1840	1549	826	53.3%	238	28.8%	684	104	226	568	16
Transfer (Male)	89	56	16	28.6%	7	43.8%	40	10	23	8	1
Transfer (Female)	89	62	23	37.1%	9	39.1%	38	12	16	12	1
Transfer (Unknown)	0	0	0	0.0%	0	0.0%	0	0	0	0	0
Special Exch. (Male)	1	1	1	100.0%	1	100.0%	0	0	0	0	0
Special Exch. (Female)	2	2	2	100.0%	2	100.0%	0	0	0	0	0
TOTALS	3733	3091	1543	49.9%	454	29.4%	1479	197	514	1048	29

Applied and Admitted totals include twelve (12) deferrals to Fall 2005.

**CHART IX
SECONDARY SCHOOL CLASS RANK BY QUINTILE - ALL MATRICULANTS
FALL SEMESTERS, 1984-2004**

	I	%	II	%	III	%	IV	%	V	%	UNKNOWN	TOTAL
1984	313	80.5%	53	13.6%	16	4.1%	6	1.5%	1	0.3%	44	433
1985	289	73.4%	90	22.8%	10	2.5%	5	1.3%	0	0.0%	32	426
1986	269	79.4%	57	16.8%	6	1.8%	4	1.2%	3	0.9%	42	381
1987	271	86.9%	30	9.6%	9	2.9%	1	0.3%	1	0.3%	47	359
1988	289	83.0%	45	12.9%	10	2.9%	3	0.9%	1	0.3%	38	386
1989	281	82.4%	42	12.3%	15	4.4%	3	0.9%	0	0.0%	58	399
1990	256	78.0%	55	16.8%	13	3.9%	3	0.9%	1	0.3%	58	386
1991	248	79.0%	44	14.0%	16	5.1%	4	1.3%	2	0.6%	59	373
1992	242	85.5%	28	9.9%	9	3.2%	3	1.1%	1	0.4%	65	348
1993	340	84.8%	41	10.2%	13	3.2%	5	1.2%	2	0.5%	82	483
1994	267	86.1%	35	11.3%	6	2.0%	1	0.3%	1	0.3%	59	369
1995	237	80.6%	49	16.7%	5	1.7%	2	0.7%	1	0.3%	73	367
1996	259	82.5%	43	13.7%	12	3.8%	0	0.0%	0	0.0%	79	393
1997	311	86.4%	46	12.8%	2	0.5%	1	0.3%	0	0.0%	105	465
1998	275	86.2%	38	11.9%	4	1.3%	1	0.3%	1	0.3%	61	380
1999	231	79.9%	54	18.7%	4	1.4%	0	0.0%	0	0.0%	69	358
2000	252	85.7%	38	12.9%	3	1.0%	1	0.3%	0	0.0%	97	391
2001	240	83.3%	43	14.9%	3	1.0%	2	0.7%	0	0.0%	113	401
2002	215	81.7%	41	15.6%	4	1.5%	1	0.4%	2	0.8%	135	398
2003	247	81.3%	50	16.4%	7	2.3%	0	0.0%	0	0.0%	114	418
2004	283	88.2%	36	11.2%	2	0.6%	0	0.0%	0	0.0%	133	454

Percentages based on a total of 321 matriculants whose class rank was reported.

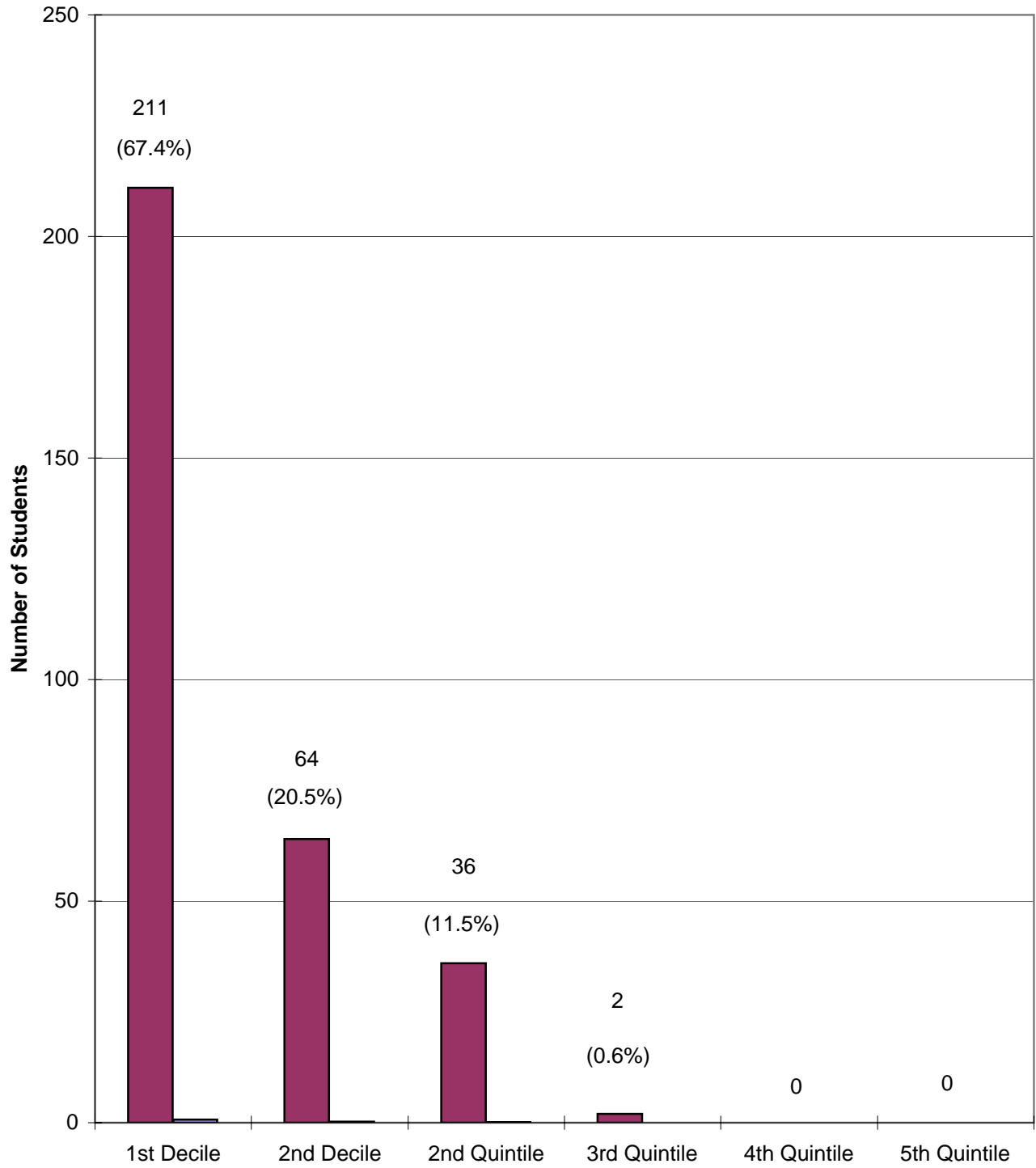
CHART X
FIRST-YEAR CLASS, FALL 2004
SECONDARY SCHOOL CLASS RANK - FIRST AND SECOND DECILES, SECOND THROUGH FIFTH QUINTILES

APPLIED (3552)												
	1ST DECILE		2ND DECILE		2ND QUINTILE		3RD QUINTILE		4TH QUINTILE		5TH QUINTILE	
	No.	%	No.	%	No.	%	No.	%	No.	%	No.	%
FEMALE	656	63.9%	214	20.8%	122	11.9%	28	2.7%	6	0.6%	1	0.1%
MALE	445	50.1%	188	21.2%	185	20.8%	56	6.3%	13	1.5%	1	0.1%
COMBINED	1101	57.5%	402	21.0%	307	16.0%	84	4.4%	19	1.0%	2	0.1%
NOT RANKED=1637												

ADMITTED (1501)												
	1ST DECILE		2ND DECILE		2ND QUINTILE		3RD QUINTILE		4TH QUINTILE		5TH QUINTILE	
	No.	%	No.	%	No.	%	No.	%	No.	%	No.	%
FEMALE	441	80.2%	83	15.1%	24	4.3%	2	0.4%	0	0.0%	0	0.0%
MALE	314	69.0%	92	20.2%	47	10.3%	2	0.5%	0	0.0%	0	0.0%
COMBINED	755	75.1%	175	17.4%	71	7.1%	4	0.4%	0	0.0%	0	0.0%
NOT RANKED=496												

MATRICULATED (435)												
	1ST DECILE		2ND DECILE		2ND QUINTILE		3RD QUINTILE		4TH QUINTILE		5TH QUINTILE	
	No.	%	No.	%	No.	%	No.	%	No.	%	No.	%
FEMALE	125	73.5%	33	19.4%	11	6.5%	1	0.6%	0	0.0%	0	0.0%
MALE	86	60.1%	31	21.7%	25	17.5%	1	0.7%	0	0.0%	0	0.0%
COMBINED	211	67.4%	64	20.5%	36	11.5%	2	0.6%	0	0.0%	0	0.0%
NOT RANKED=122												

ILLUSTRATION A
QUALITY OF FIRST-YEAR CLASS
BY HIGH SCHOOL RANK INCLASS



**CHART XI
FIRST-YEAR CLASS, FALL 2004
AVERAGE STANDARDIZED TEST RESULTS**

SCHOLASTIC ASSESSMENT TEST - SAT

	APPLIED			ADMITTED			MATRICULATED		
	Verbal	Math	Number	Verbal	Math	Number	Verbal	Math	Number
FEMALE	663	655	1048	700	685	525	691	671	137
MALE	642	682	1048	682	711	446	678	695	124
COMBINED	653	669	2096	692	697	971	684	683	261

AMERICAN COLLEGE TEST - ACT

	APPLIED		ADMITTED		MATRICULATED	
	COM	NUM	COM	NUM	COM	NUM
FEMALE	28.2	568	29.9	293	29.8	98
MALE	29.2	442	30.6	223	30.3	71
COMBINED	28.6	1010	30.2	516	30	169

ACT KEY: COM=Composite, NUM=Number

